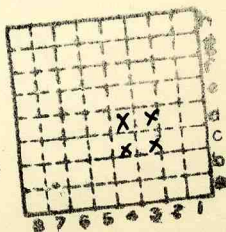




Form 180

SAM
McCLEARY / SCOTT.
W.

2 separate people



Sec. 9

T. 31 ~~8~~ N.

R. 3 ~~4~~ E.

Index No. /

✓ misc index 2571

Misc index 2450



Mine originally operated by: (1)

M. C. CLEARY. SCOTT
CREATOR

Date 1895

Original name or number:

Illinois Coal Report _____ p. _____

LATER OPERATORS

Date Operator Name or No.

2 (Chas. Scott.) (Jack M. Neil)

3 J. C. Quade

4 these points are found on
5 a RENZ MAP OF STREATOR
6 AS SEPARATE mines. There may
7 have been a McCleary & Scott
8 mine, however.

P. J. D. '69

7
8
9
10
11
12
13
14

* Also owners

See ownership sheet

Railroad, Wagon, Idle, Abandoned

IDENTIFICATION

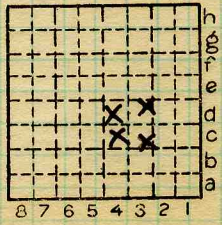
County No.

Coal No.

Quad. 80

Part 2

County LASALLE



Sec. 9

T. 31 N.

R. 3 E.

Index No.

2809

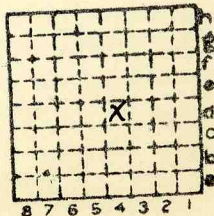
COAL MINE OPERATOR

2407



Form 180

SAM McELARY



Sec. 9

T. 31 N. ~~S.~~

R. 3 E. ~~W.~~

Index No.

mine index 2571





Mine originally operated by: (1)

SAM McCLARY
STREATOR

Date 1883

Original name or number:

Illinois Coal Report p.

LATER OPERATORS

Date	Operator	Name or No.
2		J. C. Quade
3		
4		
5		
6		
7		
8		
9		
10		
11		
12		
13		
14		

* Also owners # See ownership sheet

Railroad, Wagon, Idle, Abandoned

IDENTIFICATION

County No.

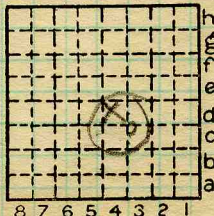
Coal No.

Quad.

Part 2

County

80
LASALLE



Sec. 9
 T. 31 N.
 R. 3 E.
 Index No.

COAL MINE OPERATOR

approx. ? Quade
2809