

DIVERSIFIED MINERALS, INC

PIT NO. 1

OPENED JAN, 1972

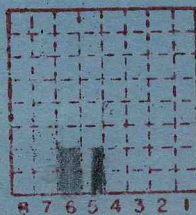
ISGS Mine Index #4184

MINE INDEX No. L-132

NO. 5 SEAM
60" THICK
45' DEPTH

AUGER

SALINE COUNTY



Sec. 13
T. 10 S.
R. 7 E.
Index No.

DIVERSIFIED MINERALS, INC.
PIT # 2
OPENED JULY, 1972

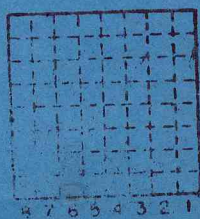
ISGS Mine Index #4184

MINE INDEX NO.
DAVIS SEAM
4' THICK
180' DEPTH

L-132

AUGER

SALINE COUNTY



Sec: 14
T. 10 S.
R. 7 E.
Index No.



STATE OF ILLINOIS

DEPARTMENT OF MINES AND MINERALS
SPRINGFIELD 62706

10

RUSSELL T. DAWE
DIRECTOR

Diversified Minerals, Inc.
Auger Mine
c/o Marion Castellano
Box #329
Marion, Illinois 62959

Gassy;
Non-Gassy;

County Saline Index No. L-13

Inspector Robert Pate

Superintendent: Marion Castellano
Box #329, Marion, Ill. 62959

Mine Manager: Gene Castellano
Box 329, Marion.

Location: South part of Saline County

Union Affiliation: Non Union

Legal Description: W $\frac{1}{2}$ of S.E. $\frac{1}{4}$ of S.W. $\frac{1}{4}$ &
E $\frac{1}{2}$ of S.E. $\frac{1}{4}$ of S.W. $\frac{1}{4}$ all in Sec. 13,
T10S, R7E, 3 P.M. PIT 2 - SEC 14

No. Employees: 7

Railroads and Highways Serving Mine: Route #34

Date Mine Opened	Seam	Thickness	Depth	Type Opening	Mining Plan	Mining Method	Haulage	Hoisting	Loading	L
1/72	#5 DAVIS	60"	45'	42" Hole	Auger	Auger	Truck	None	End-Loader	M

Remarks:

Mine Abandoned;
Final Map Rec'd;
Sealed;

Period				Tons	
Mo.	Day	Year	Mo.	Day	Year
PRODUCTION FOR PIT 1 + 2			1972		10 714

SUMMARIES

No.	to	No.

Railroad, Wagon, Strip, Idle, Abandoned

IDENTIFICATION

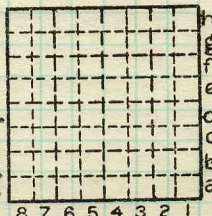
County No. _____ Coal No. _____

Coal Report No. _____

Quad.

County SALINE

PIT 1-NO. 5
PIT 2-DAVIS



Sec.

T. _____ N.
S. _____
R. _____ E.
W. _____
Index No. _____

COAL MINE—PRODUCTION

ILLINOIS GEOLOGICAL SURVEY, URBANA

Outcrop on S. bank creek $\frac{1}{4}$ mile E. of road.

2' Soil

5' Shale, light reddish brown, very soft, moderately well bedded, limonite stained.

1" Shale, very carb. soft bedded as above, limonite stained, plant impressions, may thicken to 3" across section.

DAVIS COAL ?

5" Shale, light tan, very soft, poorly bedded, limonite stained,

1" Shale, very carboneous, slightly coalified, soft, peaty,

3" Shale, coalified, soft, well bedded, plant impressions, limonite stained.

2" Clay shale, yellowish tan, limonite stained, leaf impressions

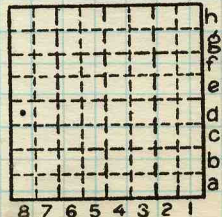
2" Ucl ~~Ucl~~, light brown, stig and other fossils, some coalified

1" Shale, coalified, moderately well bedded, limonite stained

By M. E. O. Date 6/23/54

Quad. 274 Part _____

County Saline



Sec. 14 N.
T. 16 S.
R. 7 W.
Index No.

Page 2

Sec. 14

T. 10 S

R. 7 E

- 10" Shale, gray, poorly bedded, coalified plant fossils soft, limonite cones, limonite stained.
- 2" Shale, yellowish brown, not bedded, coalified plant fossils.
- $\frac{1}{2}$ "-1" Shale, coalified, poorly bedded, plant impressions
- 2 $\frac{1}{2}$ " Shale, yellowish brown, not bedded, coalified, plant remains, clayey.
- 2" ~~Shale~~^{Vel}, light gray, slicked^b, carbonaceous parts, with no preferred orientation.
- 7" Shale, light reddish brown, poorly bedded, carbonaceous leaf impressions, ~~silty~~^{limonite} cones.
- 2" Shale, clayey, massive, carbonaceous, light^t brownish gray,
- 1 $\frac{1}{3}$ " Shale, light gray, massive, mica^ceous, limoniteⁱ stained, plant impressions,
- 8" Shale, gray, limonite stained, mica^ceous, sandy moderately well bedded,
- 5" Shale, gray, mica^ceous, poorly bedded, soft, no limonite staining, dips at about 50° to E.
- 3" Shale, reddish, brown, poorly bedded, mica^ceous, sandy, moderately hard
- 3" Shale, buff gray, mica^ceous on bedding planes^{anes}, poorly bedded, limonite stained, soft