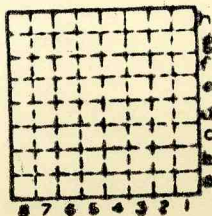




Form 180

AUG. ENGLEBRECHT
GOPHER HOLE



Sec. 9

T. 33 N. 9

R. 3 E. 1

Index No.

✓ mine index 2689



Mine originally operated by: (1)

AUG. ENGLEBRECHT
OTTAWA

Date **1927**

Original name or number: **Gopher Hole**
Illinois Coal Report **p.**

LATER OPERATORS

Date	Operator	Name or No.
2	(Mitchell - Brown) probably incorrect - see 16-31N-3E. - - J.D., 1956	J.C. Quade
3		
4		
5		
6		
7		
8		
9		
10		
11		
12		
13		
14		

* Also owners # See ownership sheet

Railroad, Wagon, Idle, Abandoned

IDENTIFICATION

County No.

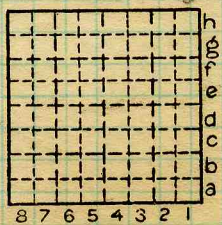
Coal No.

Quad.

Part

County

61
LASALLE



SW cor.
Sec. **9**
T. **33** N.
R. **3** E.
Index No. **1809**

COAL MINE OPERATOR