

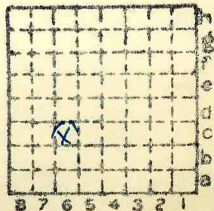
2083



Form 180

Handsewab666 cc

L 5 M.I. #192 127.



Sec. 33  
T. 3  
R. 8  
Index No.

✓



Mine originally operated by: (1)

Date

1918 I-5

Abbey Coal Corp.

Start  
1904

Original name or number: Abbey #1  
Illinois Coal Report p.

LATER OPERATORS

Date

Operator

Name or No.

2 1931 Hardscrabble Coal Co.

3

4

5

6

7

8

9

10

11

12

13

Main shaft location:  
1150' NL, 1275' EL, SW 1/4 Sec. 33

14

\* Also owners

#See ownership sheet

Railroad, Wagon, Idle, Abandoned

LOCAL MINE IDENTIFICATION

County No.

127

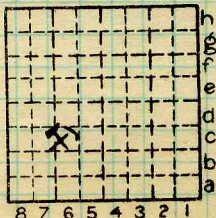
Coal No.

Part

Quad.

226

County Madison



Sec. 33

T. 3 N. e.

R. 8 W.

Index No.

COAL MINE OPERATOR

1833.6C





( Sheets ) COAL PRODUCTION ( Sheet )

Period				Tons			
Mo.	Day	Year	Mo.	Day	Year		
(L)	1907	-				800	
(L)	1908	-				-0-	
(L)	1909	-				2 364	11,822
(L)	1910	-				23 165	
(L)	1911	-				65 623	
(L)	1912	-				47 595	
(L)	1913	-				56 050	
(L)	1914	-				76 741	
						96 679	
						122 474	
						118 446	
						102 589	
(L)	1906	-				57 414	Probably add Abby mines Combined
(L)	1905	-				92 693	
(L)	1904	-				600 K5	
						600 K5	
						51 839	
						54 721	
						No Listing	
						No Listing	
						28 010	
						29 621	
						33 402	
						36 146	
						10 766	

No Books  
1915  
1927  
1928  
1937

Handscrabble  
Coal Co.

SUMMARIES 38

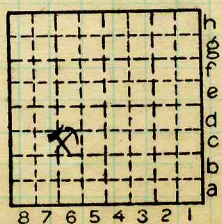
No. to No.

Railroad, Wagon, Idle, Abandoned  
IDENTIFICATION

County No. 127 Coal No.

Quad. 226 Part

County Madison



Sec. 33

T. 3 N.

R. 8 W.

Index No.

COAL MINE-PRODUCTION

1833.6C





LOCATION AND ELEVATION

Location: side R. R.  
 side R. R.  
 side Highway No.

on top. map Location sheet **Map Files # 9-60-21**

Elevation: Method, 1. Est. ( ) ft.  
 2. Inst. (kind **Alidade**) **561.3** ft.

By **P.S.M.** Data sheet

DEPTH

Authority **L.B. Lombareen** To coal \_\_\_\_\_ ft.  
 Authority Rail to rail \_\_\_\_\_ ft.  
 Top of coal above rail. (Est. Rule) \_\_\_\_\_ ft.  
 To coal **195** ft.

ALTITUDE OF TOP OF COAL

By estimated data \_\_\_\_\_

By instrumental data \_\_\_\_\_

**366** ft.

Thickness

Max. **84** in. Min. **36** in. Aver. **78** in.

GEOLOGICAL DATA

Mine notes, date **Yes**

Coop No. **192** Pyr. inv. Coal Ash inv.

CHEMICAL DATA

Analyses Face	U. I.	B. M.	<b>80862,3,4,45</b>	Others
Car	U. I.	B. M.		Others
Org. Sulf	U. I.	B. M.		Others
Ash fusion	U. I.	B. M.		Others
Ash anal.	U. I.	B. M.		Others
	U. I.	B. M.		Others

Classification

Misc. tests: Coking. Cleaning Boiler

Published descriptions:—

Railroad, Wagon, Idle, Abandoned

IDENTIFICATION

County No. **127**

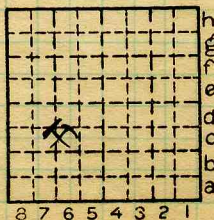
Coal No. **6**



Part

Quad. **226**

County **Madison**



Sec. **33**

T. **3** N.

R. **8** W.

Index No.

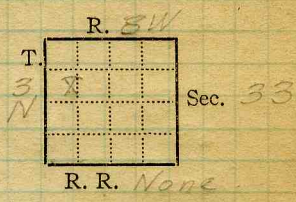
**1833.6c**

COAL MINE LOCATION AND DATA





Mine Name or No., *Abbey*  
 mile *1/2* from *Collinsville*  
 Operator, 191*21* *Abbey Coal Co*  
 Operator, 191



Entrance, *shaft* Elev., *560* ft. *above,* *sea level*  
*below,*  
 Depth to ~~bottom~~ coal, *195* ft. Alt. *365*

**SURFACE DATA.**

- A. Topography, *Hilly - relief about 100'* See
- B. Surficial materials. (1) Character, *Loess & drift*
- (2) Thickness, *No information* (3) Effect on mining and shaft-sinking, of former drainage lines, underground water strata, etc. *No information.*

- C. Outcrops, (1) Character, See  
 (2) Structure, See  
 (3) Fossil horizons, See  
 Collection No.,  
 (4) Evidences of subsidence, See
- D. Note collection of mine maps, drill records and shaft logs.

See drill record sheet,

E. Notes on surrounding area,

See

Coal bed name: Local, Survey No. *6*

Collector, *Netschband*

Mine, *Abbey* Co. *Madison* Index No. *183326*









## K. (5) Physical character of coal in benches,

(a) Relative hardness, *Relatively same as Belleville district*(b) Lustre, *Bright glauco (1/4 - 1/4") more bright*(c) Fracture, *Hackly*(d) Texture, *Laminated* See

## (6) Impurities in coal, other than bedded,

(a) Kind, *Brita lenses & bands, calcite fracture fill*(b) Position and persistence, *Thruout coal vertically & laterally*(c) Rejected, *Lenses over 1/2"* Ease of separation, *Bread free*

See

L. Floor: (1) Material, *Floor clay; lower part contains boulders*(2) Thickness, *More than 6'*(3) Variation, *No variation in character, thickness no information*(4) Note character, condition, tendency to heave, relation to undercutting commercial value. *Light gray, soft clay, plastic when wet; heaves badly giving much trouble with grades; used to undercut upon; value unknown*

See

(5) Clay sample No.

Location,

## M. Stratigraphy,

(1) Fossiliferous horizons underground,

Collection No.

Location,

## N. Notes on effect of deep drilling in coal mine areas.

See

Collector, *Notz & band*Coal: Survey No. *6* Mine, *Abbey*Co. *Madison*Index No. *1833-26*





Symbol	Description	Inches
	Aug. 10, 1921	
	Room 1, 15 <sup>th</sup> N off 3 <sup>rd</sup> W.S.	
	Black shale roof	
1	Coal	28 1/2
2	clay	3/8
3	Coal	1/2
4	Charcoal	1/2
5	Coal	10
6	clay	1/2
7	Coal	19
8	Shale BR	1 1/2
9	Coal	2 1/4
10	Charcoal	3/8
11	coal	4 1/2
12	clay	1/4
13	coal	9 3/4
	Tape 78 1/2	
		12 40
		9:05
	Condition - Damp, fresh	
	Time 3 hrs, 35 min	
	Weight 33	
	Excluded 2, 6, 8	
		78

(Scale: 1 division = 3 inches).

Sample No. N-21-116 Can No. 75607 Lab. No. 80862  
 Collector, Netzelband Coal: Survey No. 6   
 Mine, Abbey Co. Madison Index No. 1833.26  
 Q.—COAL SECTION SHEET.





Symbol Description Inches

Aug. 10, 1921

4 1/2 S off 10<sup>th</sup> W, S.  
Limestone  
Dark grey shale. 14"

1 Coal

2 pyrite

3 Coal

4 Clay

5 Coal

6 Clay

7 Coal

8 pyrite shale B

9 Coal

10 Shale B B

11 Coal

9 1/2  
14  
17 1/4  
3/8  
11 1/4  
1/2  
14 1/2  
1/2  
4  
3 1/4  
18 1/2

Tape 76 1/2

12 6 1/2  
10 1/2  
1 1/2

Condition - Dry fresh.

Time 2 hrs 47 min

Weight 2.8

Excluded 4, 6, 8, 10

15 3/16

(Scale: 1 division = 3 inches).

Sample No. N-21-117 Can No. 7583 Lab. No. 80863

Collector, Metzger Coal: Survey No. 6

Mine, Abbey Co. Madison Index No. 1833.26

Q.-COAL SECTION SHEET.





Symbol Description Inches

Aug. 10, 1921

Room 5, 4<sup>th</sup> E.S.

Black shale roof

- |                     |        |
|---------------------|--------|
| 1 Coal              | 8      |
| 2 pyrite lens       | 1 1/4  |
| 3 Coal              | 18 3/4 |
| 4 pyrite + shale    | 1/2    |
| 5 Coal              | 27     |
| 6 Pyrite band       | 3 1/2  |
| 7 Coal              | 5      |
| 8 pyrite & shale BB | 1      |
| 9 Coal              | 26 1/2 |

- 10 Coal  
11 Coal  
12 Coal

Tape 78 1/2

17  
11:10

Condition - Damp, fresh.  
Time 2 hrs. 22 min  
Weight 31  
Excluded. 2, 4, 6, 8

78 3/8

(Scale: 1 division = 3 inches).

Sample No. N-21-118 Can No. 07525 Lab. No. 80864

Collector, Netzeband Coal: Survey No.

Mine, Abbey Co. Madison Index No. 1833-26