

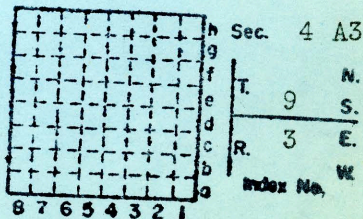
~~See active shipping book.~~

DEPTH 48'
• THICKNESS 6'
FROM M+M REPORT

Utility Coal Co.

S-19 County No. 585

ISGS Index No. 4041.



WILLIAMSON County



Mine originally operated by: (1)

Date

Wallace Coal Co.

1930

slope

Original name or number:

Illinois Coal Report 1930 p.

LATER OPERATORS

Date

52-57

Operator

idle

Name or No.

*slope
strips*

² April '58

Utility Coal Co

³ Aug 1963, 64

Peabody C.C.

strip Utility

4

5

6

7

8

9

10

11

12

13

14

300' N 400' E of SW corner SW SE (1948)

1946
OK

* Also owners

#See ownership sheet

Railroad, Wagon, Idle, Abandoned **Slope**

Mo. Pac.

IDENTIFICATION

County No. 585

Coal No. 6

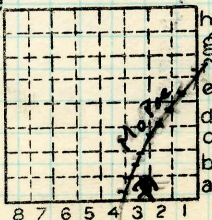


Part

Quad. W. Frankfort

(1948) 6' 8"

County Williamson



Sec. 4

T. 9 N. S.

R. 3 E. W.

Index No.

0704 a3

5-19

COAL MINE OPERATOR

Handwritten mark in a circle



(Sheets) COAL PRODUCTION (Sheet)

No.	Period						Tons	
	Mo.	Day	Year	Mo.	Day	Year		
						1935		
19	1	1	1936	12	31	1936	149	510
19	1	1	1937	12	31	1937	124	244
S-19	1	1	1938	12	31	1938	184	327
						1939	144	402
						1940	173	301
S-19	1	1	1941	12	31	1941	114	842
8-19	1	1	1942	12	31	1942	174	781
						1943	176	747
						1944	177	963
						1945	168	114
						1946	142	182
						1947	164	508
						1948	137	340
						1949	99	373
						'50	100	887
						'51	103	442
						'52	37	050
						'53	} Idle or Abandoned	
						'54		
						'55		
						'56		
						'57		
Reopened April '58 As Utility Coal Co								
						1958	160	583
						1959	264	311

6781284
44134

634160

SUMMARIES

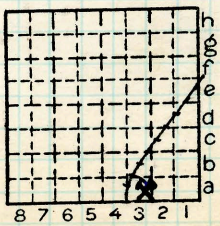
No.	to	No.		
1930		1935	528	784
			678	294

Railroad, Wagon, Idle, Abandoned Slope IDENTIFICATION

S-19

County No. 585 Coal No. 6

Quad. W. Frankfort Part
County Williamson



Sec. 4
T. 9 S.
R. 3 E.
Index No.
0704 a3

COAL MINE—PRODUCTION



(Sheets) COAL PRODUCTION (Sheet 2)

Period				Tons	
Mo.	Day	Year	Mo.	Day	Year
		1960			287 073
		1961			191 077
		1962			222 434
		1963			282 852
		1964			320 665
		1965			280 977
		1966			16 439
		1967			517 166
		1968			214 050

Strip

Strip

THIS WAS S-104 NOT S-19



ABANDONED FEB, 1966
ACCORDING TO COAL
REPORT - LDA

SUMMARIES		
No.	to	No.

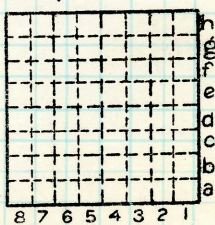
Railroad, Wagon, Strip, Idle, Abandoned Slope

Sec. 4

IDENTIFICATION

County No. 585
Coal Report No. S-19
Quad. W. Frankfort
County Williamson

Coal No. 6



T. 9 S.
R. 3 E.
Index No.

COAL MINE—PRODUCTION

ILLINOIS GEOLOGICAL SURVEY, URBANA

