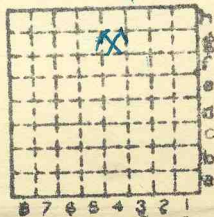


Sunnyside CMC

449

MI 165



Sec. 25

T. 8 N. S.

R. 1 E. W.

Index No.



Mine originally operated by: (1)

Date **Sunnyside Coal Co**

**1900**

Original name or number:

Illinois Coal Report **1900** p. **206**

**Sunnyside**

LATER OPERATORS

Date	Operator	Name or No.
2 1916-17	T.G.Warden Coal Co	1
3 1921-22	Sunnyside Mining Co	
4		
5		
6		
7		
8		
9		
10		
11		
12		
13		
14		

*available in F5* ✓

\* Also owners

#See ownership sheet

Railroad, Wagon, Idle, Abandoned 1925

**SHIPPING MINE**

IDENTIFICATION

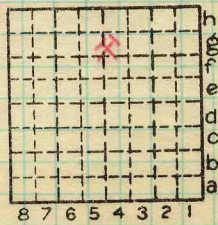
County No. **449**

Coal No. **6**

Quad. **Herrin**

Part **7**

County **Williamson**



Sec. **25**

T. **8** N. S.

R. **1** E. W.

Index No.

**0425 g4**

COAL MINE OPERATOR



Period						Tons
Mo.	Day	Year	Mo.	Day	Year	
7	1	1925	12	31	1925	(idle)
1	1	1926	12	31	1926	(idle)
(Abandoned)						

SUMMARIES

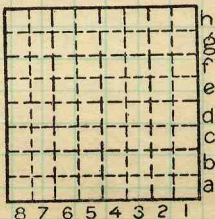
No. to No.  
**1899** to **1925**

Railroad, Wagon, Idle, Abandoned **1925**  
 IDENTIFICATION

County No. **449** Coal No. **6**

Quad. **Herrin** Part **7**

County **Williamson**



Sec. **25**

T. **8** S.

R. **1** E.

Index No. **0425 g4**





Period						Tons	
Mo.	Day	Year	Mo.	Day	Year		
7	1	1899	6	30	1900	10	498
7	1	1900	6	30	1901	91	662
7	1	1901	6	30	1902	150	013
					1903	266	304
					1904	345	767
					1905	371	225
					1906	289	874
					1907	388	180
					1908	397	525
					1909	479	921
					1910	379	542
					1911	227	519
					1912	342	383
					1913	355	730
					1914	330	866
					1915	298	738
7	1	1915	6	30	1916	309	141
					1917	395	070
					1918	424	917
					1919	320	178
					1920	305	587
					1921	415	971
					1922	128	555
					1923	317	448
					1924	79	921
					1925	18	000

SUMMARIES

No. to No.  
 1899 to 1925

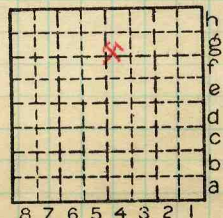
Railroad, Wagon, Idle, Abandoned

IDENTIFICATION

County No. 449 Coal No. 6

Quad. W.F. Part 7

County Williamson



Sec. 25

T. 8 S.

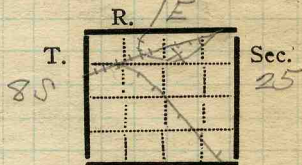
R. 1 W.

Index No. 0425 g4

Town, *Herrin*  
 Local Authority, *T.W. Hale, Mine Mgt.*  
 Level: Auth.,  
 Method, *Topog. map.*

Surface alt., *420* ft.  
 Depth to coal, *150* ft.  
 Alt. top coal, *270* ft.  
 Thickness: Av. *108* in.  
 Max. *120* in., Min. *96* in.

R. R., *I.C. & C.B. & Q.*  
 Location: authority, *Mine Map.*



Operator \_\_\_\_\_ Mine Name or No. \_\_\_\_\_

1921 *T.G. Warden Coal Co. Sunnyside Mine.*

Successor to  
 Date  
 Succeeded by  
 Date  
 Succeeded by  
 Date

**PRODUCTION.**

							U. S. No.
1921	<i>1850 Tons per day. this mine is almost worked out.</i>						
						<i>Dup</i>	

Geol. Notes? *Yes*      Coop. No.      Coal secs? *3*  
 Analyses No.

Examined by *Wilson*      Ref. \_\_\_\_\_

Coal bed name: Local      Survey No. *6*

County *Williamson*      Index No. *0425.5794*

K.—ACTIVE SHIPPING OR LOCAL COAL MINE. *duplicate*  
 (9019-1M-7-18)



Location and Elevation Data

Location: Exact  Approximate  
 (Approximate only if no trace or record of original exists)

Location by W. B. Roe  
 Date 8-26-1932 Notebook No. 614 Page 61(2391)  
 Looseleaf ref. \_\_\_\_\_  
 Map files No. 14-100-45

Description of location

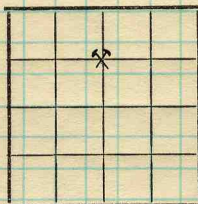
Position in sec.,  $\frac{1}{4}$  sec., 40 acres

1400 feet from North line

\_\_\_\_\_ feet from East line

\_\_\_\_\_ feet from South line

2550 feet from West line



Sec. 25  
 T. 8 S.  
 R. 1 E.

Other description: \_\_\_\_\_  
 Farm \_\_\_\_\_  
 No. \_\_\_\_\_  
 Company Sunnyside Coal Co.  
 No. Sunnyside mine  
 County No. 92

Elevation 417.4 ft.

By W. B. Roe

Method: Level, transit, alidade, hand level  
Plane table & alidade

Elevation of Ground at NW corner of old shaft hole

Height of point above ground \_\_\_\_\_

Date 8-26-1932 Notebook 614 P. 61(2391)

Looseleaf ref. \_\_\_\_\_

Map files No. 14-100-45

Description of item: (drill hole, mine, etc.) Air shaft - abandoned shipping mine  
**SHIPPING MINE**

County Williamson (45576-1M-10-30)  
 Quadrangle Herrin  
 Index No. 0425.5f





LOCATION AND ELEVATION

Location: S side I.C. R. R.  
side R. R.  
side Highway No.

on top. map Location sheet

Elevation: Method, 1. Est. ( ) ft.  
2. Inst. (kind P table ) 416.2 ft.

By W.E.Roe 14-100-45 Data sheet

DEPTH

Authority T.E.S. Grout To coal 159 ft.  
Authority Rail to rail ft.  
Top of coal above rail. (Est. Rule) 9 ft.  
To coal 150 ft.

ALTITUDE OF TOP OF COAL

By estimated data ft.  
By instrumental data 266 ft.

Thickness  
Max. 120 in. Min. 96 in. Aver. 108 in.

GEOLOGICAL DATA

Mine notes, date 1907+(T.E.S.) 1921 (Wilson-Thurston)

Coop No. 165 Pyr. inv. Coal Ash inv.

CHEMICAL DATA

Analyses Face U. I. B. M. 80651-4 Others  
Car U. I. B. M. Others  
Org. Sulf U. I. B. M. Others  
Ash fusion U. I. B. M. Others  
Ash anal. U. I. B. M. Others  
U. I. B. M. Others

Classification R.I. 134 U.C.I. 147

Misc. tests: Coking. Cleaning Boiler

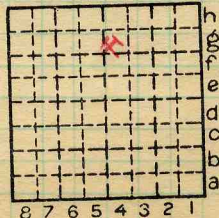
Published descriptions:—

Railroad, Wagon, Idle, Abandoned 1925

IDENTIFICATION

County No. 449  
Quad. Herrin  
County Williamson

Coal No. 6  
Part 7



Sec. 25  
T. 8 S.  
R. 1 E.  
Index No. 0425 g4

COAL MINE LOCATION AND DATA



COAL MINE NOTES.

COUNTY *Williamson*

TOWN

MAP No. *0425*

T. *85*

R. *1E*

S. *25 NE 1/4*

*0425*

OPERATOR *Sunny side Coal Co.*

OFFICE *Fisher Bldg. Chicago.*

MINE *\*1 Sunny side.*

TIPPLE

ENGINES

BOILERS

DRUM

SHAFT

CAGE

HAULAGE

CARS

VENTILATION

DRAINAGE

SPRINKLING

WORKING SYSTEM

MINING METHODS

*Shot off solid.*

SIZE OF ENTRIES—MAIN

CROSS

ROOM

NECK

SIZE OF PILLARS—MAIN

CROSS

ROOM

SHAFT

CHAIN

BARRIER

AMOUNT OF TIMBERING

SIZE

PROPORTION OF COAL UTILIZED

AMOUNT AND CHARACTER OF WASTE

ACREAGE OF COAL MINED

ACREAGE OF COAL REMAINING

PROPORTION OF MINE RUN AND SCREENED COAL

METHOD OF SIZING

RESCREENED

SIZES

PER CENT

PROPORTION AND SIZE OF WASHED COAL

DAILY OUTPUT

UTILIZATION

MARKETS

FREIGHT RATES

SELLING PRICES AT MINE

COAL LAND OWNED

LEASED

HELD IN FEE

*0425*

COST OF LAND OWNED

LEASED

HELD IN FEE

*94*

ADDITIONAL NOTES *on sizing see Bain N.B. 10 P. 45*

*0425*





COAL MINE NOTES.  
CONTINUED.

0425

OPERATOR *Sunnyside Coal Co.* MINE *Sunnyside.*  
 ENTRANCE *Shaft.* NAME OF COAL BED #7  
 ELEVATION *413.5* THICKNESS OF COAL  
 DEPTH TO FLOOR *159.* MAX. MIN. AV.  
 ALTITUDE OF COAL *254.5*  
 LOCATION OF SECTION *Room #6, 9<sup>th</sup> S. main W. on West Side.*

No.	SECTION.	In.
1	<i>Gray Shale many feet.</i>	
2	<i>Coal soft top</i>	<i>20</i>
3	<i>Coal</i>	<i>58</i>
4	<i>Blue Band</i>	<i>1/2</i>
5	<i>Coal</i>	<i>30</i>
6	<i>Fire Clay.</i>	
7		
8		
9		
10		
11		
12		
Tape		Total

SECTION

Feet

SAMPLE No. *G 68*

CAN No. *20"*

CONDITION *58"*

GROSS WEIGHT

TIME EXPOSED *1/2*

NOT SHIPPED *30"*

NOT INCLUDED *4*

xxx  
xxx

PHYSICAL PROPERTIES BY NUMBERS

*A streak of bone occurs thru out the district a few inches above blue band. 3" to 4" thick.*

ROOF *Fair.*

FLOOR

DIP

FAULTS, ETC. *Coal rolls a little*

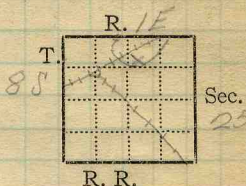
GAS

COLLECTOR *Groat.  
Bain  
Sarage.*

REFERENCE *7, 73  
10, 45*

DATE *0425  
94*

Mine Name or No., *Sunnyside*  
*1* mile *W* from *Herrin*  
 Operator, 1911  
*T. G. Warden Coal Co.*  
 Operator, 191



Entrance, *Shaft* Elev., *420* ft.  $\left\{ \begin{array}{l} \text{above,} \\ \text{below,} \end{array} \right.$  *sea level.*  
 Depth to bottom coal, *150* ft. Alt. *270*

SURFACE DATA.

- A. Topography, *Rolling* See
- B. Surficial materials. (1) Character, *Till* ;
- (2) Thickness, *40* (3) Effect on mining and shaft-sinking, of former drainage lines, underground water strata, etc.

- C. Outcrops, (1) Character, See  
 (2) Structure, See  
 (3) Fossil horizons, See  
 Collection No.,  
 (4) Evidences of subsidence, See
- D. Note collection of mine maps, drill records and shaft logs.

*For Elev see Pfeiffer, Mining Engineer, Herrin, Ill.*

See drill record sheet,

- E. Notes on surrounding area,

See

Coal bed name: Local,

Survey No. *6*

Collector, *Wilson*

Mine, *Sunnyside*

Co. *Williamson* Index No. *0425.57*

L.—SURFACE SHEET (Geol.)

*84*



F. Thickness of rock above bed worked, *110' Rept'd.*

(1) Important variations, See

G. Note presence of strata having important effect on mining, See

*Gray shale*

- (1) Position, *overlying coal*
- (2) Character, *top coal is left to support it.*
- (3) Persistence, *throughout mine*
- (4) Other workable coal beds, *None*

See

H. Cap rock, *Not seen in mine*

- (1) Thickness, *15' See Section on this page.*
- (2) Height above coal, *83'*

See

I. Immediate roof, *Light gray shale*

- (1) Thickness, (2) Contact with coal,

*Total shale over coal 83' Regular contact except at rolls*

- (3) Horizontal variation, See

J. Draw slate. (1) Thickness, *6-10"* (2) Contacts

*tight with coal; loose with shale.*

- (3) Persistence,

*Only in S. part of Mine.*

K. Coal bed: Max. *120* Min. *96* Av. *108* inches

- (1) Benches,

(a) Position, *Top coal 12-24"*

*Middle Coal 63"; Below B.B. 22"*

- (b) Persistence,

See

*throughout mine*

- (2) Bedded impurities, kind, position in benches, persistence, ease of separation.

*B.B. 1-2" Soft gray shale. Charcoal layers.*

See

- (3) Irregularities in continuity of bed (due to deposition, erosion, or movement,

*Few "rolls" or small slips*

See X 4

- (a) Effect on mining,

See

SECTION <i>Rept'd</i>				
Ft.	In.	Name	Index	Sym.
		Till		
		S.S.		
		L.S.		
		Shale & "Slate"		
		Coal		
		F.C.		

Collector, *Wilson*

Coal: Survey No. *6*

Mine, *Sunnyside* Co. *Williamson*

Index No. *04 25 59*

## K. (5) Physical character of coal in benches,

(a) Relative hardness, *Softer in top than in bottom because of gas in top.*(b) Lustre, *Dull-bright*(c) Fracture, *Cleat not well developed.*(d) Texture, *Laminated* See

## (6) Impurities in coal, other than bedded,

(a) Kind, *Pyrite Stringers & Lenses.*(b) Position and persistence, *Over B.B.*

(c) Rejected,

Ease of separation,

See

L. Floor: (1) Material, *Floor Clay, Light gray - soft.*(2) Thickness, *18"-5"*(3) Variation, *Thick in the "swags" thin on the "hills."*

(4) Note character, condition, tendency to heave, relation to undercutting commercial value.

*F.C. heaves badly when wet; especially where it is so thick.*

See

(5) Clay sample No.

Location,

## M. Stratigraphy,

(1) Fossiliferous horizons underground,

*Plant remains in shale over coal.*

Collection No.

Location,

## N. Notes on effect of deep drilling in coal mine areas.

See

Collector, *Wilson*Coal: Survey No. Mine, *Sunnyside*Co. *Williamson*Index No. *0425:57*



K3 "Rolls" or faults; No large faults were observed in this mine although a number of small irregularities in the roof forced the coal down to a thickness of only  $3\frac{1}{2}$ ' in places. These "rolls" were along small fault planes, or were the result of lenticular bodies of the "white top".

Collector *Wilson*

X- 1

EXTRA NO. 1

Index No. *0425.5794*County *Williamson*

Operator, *T.G. Warden Coal Co.* Date *July 27, 1921*  
 Mine, *Sunnyside* Sec. *25 T. 85 R. 1E*  
 Located, *1 W* miles from *Herrin*  
 Location in mine, *Room 1, 10<sup>th</sup> stub 14<sup>th</sup> SW*

GRAPHIC SECTION		DESCRIPTION OF SECTION (AT POINT SAMPLED)		
In.	No.	No.	(Note character and thickness of roof)	Inches
			<i>White shale</i>	
			<i>1 Coal (left as roof) App 18"</i>	
			<i>2 Coal pyrite stringers</i>	<i>38</i>
			<i>3 Pyrite lens</i>	<i>1 1/2</i>
			<i>4 Coal</i>	<i>9</i>
			<i>5 Charcoal</i>	<i>1/8</i>
			<i>6 Coal</i>	<i>11</i>
			<i>7 Charcoal &amp; pyrite</i>	<i>3/4</i>
			<i>8 Coal</i>	<i>7</i>
			<i>9 Charcoal</i>	<i>1/4</i>
			<i>10 Coal</i>	<i>6 1/2</i>
			<i>11 B.B. soft grey shale</i>	<i>3/4</i>
			<i>12 Coal</i>	<i>23</i>
			<i>Tap 87</i>	
			(Note character and thickness of floor)	
			Total thickness of coal.	<i>105 7/8</i>
			Condition, <i>Dry stale</i> Time, <sup><i>12:50</i></sup> <sub><i>2:15</i></sub> <i>3</i> hr. <i>5</i> min.	
			Wt. Gross, <i>25</i> lbs. Net, lbs.	
			What Nos. shipped by Co.?	
			Excluded from sample: No. <i>1, 3, 11</i>	
			Sample represents <i>85 5/8</i> in. tons.	
			Impurities? How do they occur?	

Sample No. *N-21-99* Can No. *18139* Lab. No. *80653*  
 Collector, *Thurston* Coal: Survey No. *6*   
 Mine, *Sunnyside* Co. *Williamson* Index No. *0425-794*  
 R.—COAL SAMPLE SHEET. *#165*



Operator, *T.G. Warden Coal Co* Date *July 27, 1931*  
 Mine, *Sunnyside* Sec. *25 T. 8 S R. 1 E*  
 Located, *1 1/4* miles from *Herrin*  
 Location in mine, *Crosscut 7th stub off 11th N. W*

GRAPHIC SECTION DESCRIPTION OF SECTION (AT POINT SAMPLED)

In.	No.	No. (Note character and thickness of roof)	Inches
		<i>Black slate</i>	
		<i>1 Coal (left as roof) App 12"</i>	
		<i>2 Coal</i>	<i>10</i>
		<i>3 Charcoal &amp; pyrite</i>	<i>1/2</i>
		<i>4 Coal</i>	<i>16</i>
		<i>5 Charcoal</i>	<i>1/8</i>
		<i>6 Coal</i>	<i>7 1/4</i>
		<i>7 Charcoal</i>	<i>1/8</i>
		<i>8 Coal</i>	<i>9</i>
		<i>9 Charcoal</i>	<i>1/4</i>
		<i>10 Coal</i>	<i>25</i>
		<i>11 Charcoal</i>	<i>1/4</i>
		<i>12 Coal</i>	<i>7</i>
		<i>13 BB</i>	<i>1 3/4</i>
		<i>14 Coal</i>	<i>22</i>
		<i>Tape 89 1/2</i>	
		<i>Floor clay</i>	
		(Note character and thickness of floor)	
		Total thickness of coal.	<i>101 1/4</i>

Condition, *Dry state* Time, <sup>*12:30*</sup><sub>*8:40*</sub> *3* hr. *50* min.  
 Wt. Gross, *32* lbs. Net, *4* lbs.  
 What Nos. shipped by Co.?  
 Excluded from sample: No. *13, 1*  
 Sample represents *87 1/2* in. *1* tons.  
 Impurities? How do they occur?

Sample No. *N-21-98* Can No. *17559* Lab. No. *80652*

Collector, *Thurston* Coal: Survey No. *6*

Mine, *Sunnyside* Co. *Williamson* Index No. *0425. 57*

R.—COAL SAMPLE SHEET. *1165* *94*





Operator, *T. G. Warden Coal Co.* Date *July 27, 1921*  
 Mine, *Sunnyside* Sec. *25* T. *85* R. *1E*  
 Located, *1 W* miles from *Herrin*  
 Location in mine, *17th W. Stub off the 10th S. off Main W. Room 7*

GRAPHIC SECTION		DESCRIPTION OF SECTION (AT POINT SAMPLED)		
In.	No.	No.	(Note character and thickness of roof)	Inches
			<i>Shale</i>	
		<i>1.</i>	<i>Coal (Left as roof) 24"</i>	
		<i>2.</i>	<i>Coal</i>	<i>16 1/4</i>
		<i>3.</i>	<i>Charcoal</i>	
		<i>4.</i>	<i>Coal calcite stringers</i>	<i>13</i>
		<i>5.</i>	<i>Charcoal</i>	<i>1/4</i>
		<i>6.</i>	<i>Coal long pyrite stringers</i>	<i>37</i>
		<i>7.</i>	<i>B.B. Shale</i>	<i>1 1/2</i>
		<i>8.</i>	<i>Coal</i>	<i>22</i>
			<i>Tap 88 1/2</i>	
			<i>Floor clay</i>	
			(Note character and thickness of floor)	
			Total thickness of coal.	<i>163</i>
		Condition, <i>Dry, Stale</i>	Time, <i>10:53</i> <i>2</i> hr. <i>27</i> min.	
		Wt. Gross, <i>37</i> lbs.	Net, <i>4</i> lbs.	
		What Nos. shipped by Co.?		
		Excluded from sample: No. <i>1.7</i>		
		Sample represents <i>88 1/2</i> in. tons.		
		Impurities? How do they occur?		

Sample No. *N-21-100* Can No. *18129* Lab. No. *80651*  
 Collector, *Thurston* Coal: Survey No.   
 Mine, *Sunnyside* Co. *Williamson* Index No. *0425.57*  
 R.—COAL SAMPLE SHEET. *#165*



Wmson

Coal Report  
1900

*New Mines.*—The most important new mines opened in the district during the year are the Sunnyside Coal Company's mine, and that of the Chicago-Carterville Coal Mine Company, both located near Herrin, Williamson county, on the line of the Illinois Central railroad.

The Sunnyside Coal Company's new shaft is 145 feet to the top of the coal. The thickness of the seam is nine feet. The size of the shaft is seventeen feet eight inches by nine feet in the clear, the hoisting shafts being six feet eight inches by nine feet each, the pipe way three feet by nine feet. The hoisting engines are 18x32 inches, double, of the Litchfield manufacture; the drum is six feet in diameter, and the capacity of the mine car is two and a half tons. The boilers are forty-eight inches by twenty-six feet, hung to iron framing. The smoke stack is four feet in diameter and fifty feet high. The ventilating fan is of the Crawford & McCremmon manufacture and is twenty feet in diameter, driven by an engine 12x24 inches, direct motion. It is located at the air shaft, 300 feet from the hoisting shaft. The size of the escapement shaft is 8x13 feet in the clear; four feet eight inches by eight feet of this shaft is used for a stairway; the rest of the space is used for ventilating.

The company is now engaged in putting in a coal breaker to break lump coal when desired. The size of the rollers is thirty inches in diameter each, with 3½ inch steel teeth, driven by belting from the main shaft. The size of the engine to run these rollers is 12x16 inches. It also furnishes the power to drive the conveyer for carrying the coal from the breaker to the railroad cars. The shop is equipped with a drill press lathe. Plans are about completed on a coal washing plant, which will be erected and put in operation as soon as possible.

Mine originally operated by: (1)

Date

Original name or number:

Illinois Coal Report

P.

Railroad, Wagon, Strip, Idle, Abandoned

IDENTIFICATION

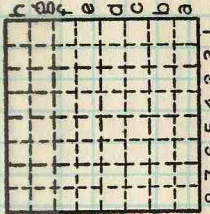
County No. \_\_\_\_\_

Coal Report No. \_\_\_\_\_

Quad.

County

Coal No.



Sec.

T. N. S. E. W.  
R.     

Index. No.

8 7 6 5 4 3 2 1

COAL MINE OPERATOR

