

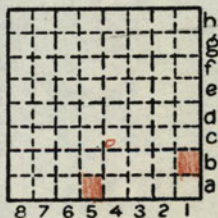
FIELD NOTES  
Illinois State Geological Survey

pg. 4  
(2822.5a)

Cut banks along creek in SE/4, SW/4 of the section.  
Sandstone--thin to medium-bedded, gray,  
fine-grained, micaceous, weathers gray. 12'  
Sandstone or sandy shale--thin-bedded, gray  
to brown, weathers brownish. exposed 2"

- 1b August 30, 1932.  
Petrotti Coal Mine adjacent to Spring Hill Mine,  
East of Kangley, by Streator Brick Company.  
Coal #7 ? #6 *Heaven #6 Rd 2/11/82*  
Slate--black. *ASK* 2'  
Shale--dark, slaty. *BILL* 7'  
Sandstone. 2"  
Clay. 2"  
Coal. *Spring Lake Coal Rd Jacobson* 1' 8"  
Fine clay. 5'  
Fine clay--sandy. 4'

- 4c August 19, 1933.  
Coal mine SE of Kangley.  
Sand--silty, calcareous, fine-grained, light  
yellow. 15'  
Shale--bluish, sandy, perhaps equivalent  
to siltstone found at Streator. 35'  
Coal. 5' 8 1/2"  
Soapstone (underclay)  
Section obtained from miner orally. No gravel.



By L. C. Robinson Date 1933-32

Quadrangle Streator

County LaSalle Sec. 22 T. 31N R. 3E