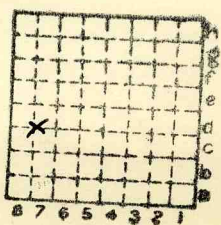




Form 180

LUKINS - KAUNAUGH
(C)



Sec: 23

T. 31 ~~8~~

R. 3 ~~4~~

Index No.

✓ Mine index 2604



Mine originally operated by:

(1) Lukins-Kavanaugh
Streator

Date 1891

Original name or number:

Illinois Coal Report p.

LATER OPERATORS

| Date | Operator | Name or No. |
|--------|-------------|-------------|
| 2 1889 | M. Brooks ? | CORRECT |
| 3 | | |
| 4 | | |
| 5 | | |
| 6 | | |
| 7 | | |
| 8 | | |
| 9 | | |
| 10 | | |
| 11 | | |
| 12 | | |
| 13 | | |
| 14 | | |

* Also owners

See ownership sheet

Railroad, Wagon, Idle, Abandoned

1893 (McBoa) (C&D)

IDENTIFICATION

County No.

Coal No.



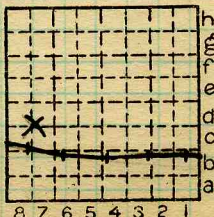
Part 5

Quad.

8030

County

LaSalle



Sec. 23

T. 31 N. S.

R. 3 E. W.

Index No.

2823

COAL MINE OPERATOR