



Form 180

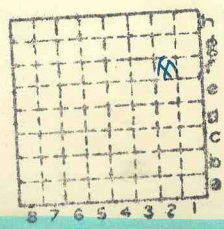
R - F

HERRIN

New St. Clair CC

h. 16

254



Sec. 17

T.	2	N.	S.
R.	8	E.	W.

Index No.

Mine Index 3605



Mine originally operated by: (1)

Date

L-16

1927

Original name or number:

Illinois Coal Report

D.

LATER OPERATORS

Date

Operator

Name or No.

2 1930 New St Clair Coal Co

New St-Clair

3

4

5

6

7

8

9

10

11

12

13

14

* Also owners

#See ownership sheet

Railroad, Wagon, Idle, Abandoned Shaft

LOCAL MINE IDENTIFICATION

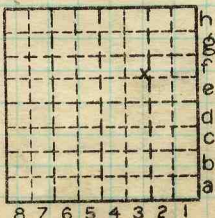
County No. 257

L-16 Coal No. 6



Quad. French Village Part 1

County St Clair



Sec. 17

T. 2 N. E.

R. 8 E. W.

Index No.

0317 2f

L

COAL MINE OPERATOR



(Sheets) COAL PRODUCTION (Sheet)

Period						Tons		
Mo.	Day	Year	Mo.	Day	Year			
1	1	1930	12	31	1930	8 640		Local
		1931			1931	8 320		"
		1932			1932	12 516		"
		1933			1933	12 490		"
		1934			1934	11 364		"
		1935			1935	12 006		"
		1936						
		1937			18997			
		1938			24,526			
Abd.	-	1939			12,082			

SUMMARIES

No.	to	No.

Railroad, Wagon, Idle, Abandoned

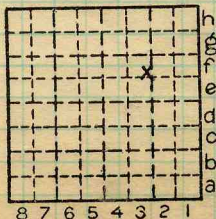
IDENTIFICATION L-16

LOCAL MINE

County No. 257 Coal No. 6

Quad. Fr. Village Part 1

County St. Clair



Sec. 17

T. 2 N.
R. 6 E.
W. W.
Index No.

COAL MINE—PRODUCTION

0317 2f
L



LOCATION AND ELEVATION

Location: side B&O R. R.
N side R. R.

side Highway No. 225d
on top. map 225d Location sheet 13-87-44b

Elevation: Method, 1. Est. () _____ ft.

2. Inst. (kind Plane Table) 482.0 ft.

By WBR 1930 Data sheet

DEPTH

Authority To coal 95 ft. 90'

Authority Rail to rail _____ ft.

Top of coal above rail. (Est. Rule) _____ ft.

To coal _____ ft.

ALTITUDE OF TOP OF COAL

By estimated data _____

By instrumental data 387 _____ ft.

Thickness

Max. in. Min. in. Aver. 69 in.

GEOLOGICAL DATA

Mine notes, date 1930 _____

Coop No. _____ Pyr. inv. _____ Coal Ash inv. _____

CHEMICAL DATA

Analyses Face	U. I.	B. M.	Others
Car	U. I.	B. M.	Others
Org. Sulf	U. I.	B. M.	Others
Ash fusion	U. I.	B. M.	Others
Ash anal.	U. I.	B. M.	Others
	U. I.	B. M.	Others

Classification

Misc. tests: Coking. _____ Cleaning _____ Boiler _____

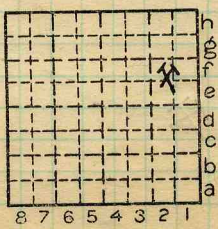
Published descriptions:—

Railroad, Wagon, Idle, Abandoned

LOCAL MINE IDENTIFICATION

County No. 257
Quad. French Village
St. Louis
County St. Clair

L-16
Coal No. 6
Part 1



Sec. 7
T. 2 N.
R. 8 W.
Index No.

COAL MINE LOCATION AND DATA