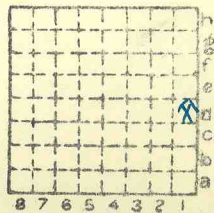


Me Haven CC #2  
 Underground Mine  
 m2 3997 db



Sec. 4  
 T. 9 N.  
 S.  
 R. 1 E.  
 W.  
 Index No.

✓



Mine originally operated by: (1)

Date 1936

McLaren Coal Co

Original name or number: 2  
Illinois Coal Report 1936

p.

LATER OPERATORS

Date	Operator	Name or No.
2		
3		
4		
5		
6		
7		
8		
9		
10		
11		
12		
13		
14		

Tonnage Reported with McLaren #1, 1937+

\* Also owners

# See ownership sheet

Railroad, Wagon, Idle, Abandoned

Slope

I.C.

19384

IDENTIFICATION

County No.

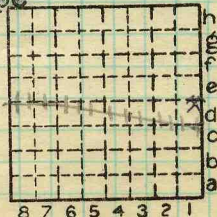
Coal No.



Part

Quad. Herrin

County Williamson



Sec. 4

T. 9 N. S.

R. 1 E. W.

Index No.

COAL MINE OPERATOR

0504-d-1



No.	Period						Tons
	Mo.	Day	Year	Mo.	Day	Year	
14	1	1	1936	12	31	1936	14 667
14	1	1	1937	12	31	1937	
Tonnage included in report for McLaren #1.							

SUMMARIES

No. to No.

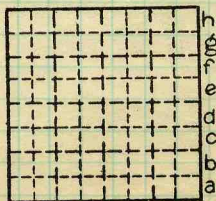
Railroad, Wagon, Idle, Abandoned <sup>1937</sup> Slope

IDENTIFICATION Drift

County No. Coal No. 6

Quad. Herrin Part

County Williamson



Sec. 4  
T. 9 N.  
R. 1 E.  
Index No. W.

0504#d-1

COAL MINE—PRODUCTION



LOCATION AND ELEVATION

Location: side R. R.
side R. R.
side Highway No.
on top. map Location sheet

Elevation: Method, 1. Est. ( ) ft.
2. Inst. (kind ) ft.

By Data sheet
DEPTH
Authority To coal 37 ft.
Authority Rail to rail ft.
Top of coal above rail. (Est. Rule) ft.
To coal ft.

ALTITUDE OF TOP OF COAL
By estimated data
By instrumental data ft.
Thickness

Max. in. Min. in. Aver. 108 in.

GEOLOGICAL DATA 108
Mine notes, date None

Coop No. Pyr. inv. Coal Ash inv.

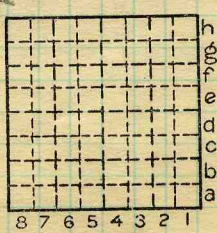
CHEMICAL DATA
Analyses Face U. I. B. M. Others
Car U. I. B. M. Others
Org. Sulf U. I. B. M. Others
Ash fusion U. I. B. M. Others
Ash anal. U. I. B. M. Others
U. I. B. M. Others

Classification
Misc. tests: Coking. Cleaning Boiler

Published descriptions:—

Railroad, Wagon, Idle, Abandoned 1938 Draft
400' from E. line
2240' from S. line
IDENTIFICATION

County No. Coal No. 6
Part
Quad. Herrin
County Williamson



Sec. 4
T. 9 N. S.
R. 1 E. W.
Index No. 0504 d1

COAL MINE LOCATION AND DATA