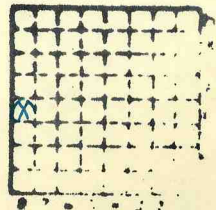


ISGS Index No. 4033

Gilford, Price, McGowan cc

484



Sec. 12

T. 9

R. 2

Index No.

✓



Mine originally operated by: (1)

Gilford, Price, McGowan
Coal Company

Date

Original name or number:

Illinois Coal Report

p.

LATER OPERATORS

Date	Operator	Name or No.
2		
3		
4		
5		
6		
7		
8		
9		
10		
11		
12		
13		
14		

* Also owners

#See ownership sheet

Railroad, Wagon, Idle, Abandoned

LOCAL MINE

IDENTIFICATION

County No. 484

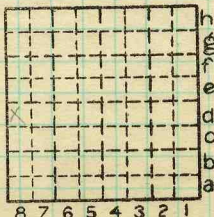
Coal No. 6



Part

Quad. W. Frankfort

County Williamson



Sec. 12

T. 9 S.

R. 2 E.

Index No. 0612 d8

COAL MINE OPERATOR



LOCATION AND ELEVATION

Location: side R. R.
side R. R.
side Highway No.

on top. map (photol.) Location sheet

Elevation: Method, 1. Est. () ft.
2. Inst. (kind HL) 504 ft.

By G.H.C. N1379 p22 Data sheet

DEPTH

Authority To coal 0 ft.
Authority Rail to rail ft.
Top of coal above rail. (Est. Rule) ft.
To coal 0 ft.

ALTITUDE OF TOP OF COAL

By estimated data ft.
By instrumental data 504 ft.

Thickness Not given

Max. in. Min. in. Aver. 108 in.

GEOLOGICAL DATA

Mine notes, date _____
Coop No. Pyr. inv. Coal Ash inv.

CHEMICAL DATA

Analyses Face U. I. B. M. Others
Car U. I. B. M. Others
Org. Sulf U. I. B. M. Others
Ash fusion U. I. B. M. Others
Ash anal. U. I. B. M. Others
U. I. B. M. Others

Classification

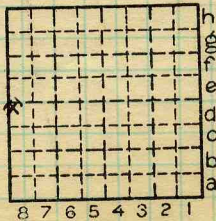
Misc. tests: Coking. Cleaning Boiler

Published descriptions:—

Railroad, Wagon, Idle, Abandoned

IDENTIFICATION

County No. 484 Coal No. 6 Part
Quad. W. Frankfort
County



Sec. 12
T. 9 S.
R. 2 W.
Index No.

0612 D8

COAL MINE LOCATION AND DATA