



Mine originally operated by: (1)

Date

Edward B K Coal Company

Original name or number:

Illinois Coal Report

p.

LATER OPERATORS

Date

Operator

Name or No.

- 2
- 3
- 4
- 5
- 6
- 7
- 8
- 9
- 10
- 11
- 12
- 13
- 14

* Also owners

#See ownership sheet

Railroad, Wagon, Idle, Abandoned Drift

LOCAL MINE

IDENTIFICATION

County No. 530

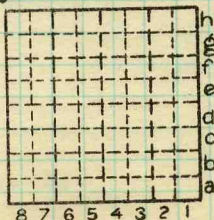
Coal No.

5

Quad. Marion

Part

County Williamson



Sec. 30

T. 9 N. S.

R. 4 E. W.

Index No.

0830 a8

COAL MINE OPERATOR



LOCATION AND ELEVATION

Location: side R. R.
side R. R.
side Highway No.

on top. map Location sheet

Elevation: Method, 1. Est. () ft.
2. Inst. (kind Hand Level) 485 ft.

By Data sheet

DEPTH

Authority To coal ft.

Authority Rail to rail ft.

Top of coal above rail. (Est. Rule) ft.

To coal 5 ft.

ALTITUDE OF TOP OF COAL

By estimated data

By instrumental data

480 ft.

Thickness

Max. in. Min. in. Aver. 48 in.

GEOLOGICAL DATA

Mine notes, date

Coop No. Pyr. inv. Coal Ash inv.

CHEMICAL DATA

Table with 4 columns: Analyses Face, U. I., B. M., Others. Rows include Car, Org. Sulf, Ash fusion, Ash anal.

Classification

Misc. tests: Coking. Cleaning Boiler

Published descriptions:—

Railroad, Wagon, Idle, Abandoned Drift

IDENTIFICATION

County No. 530

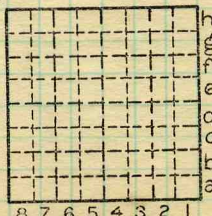
Coal No.

5

Part

Quad. Marion

County Williamson



Sec. 30

T. 9 N. S.

R. 4 E. W.

Index No. 0830 a8

COAL MINE LOCATION AND DATA