



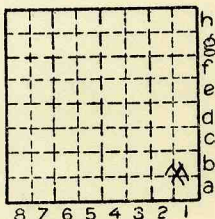
Location and Elevation Data

Location: Exact Approximate
 (Approximate only if no trace of record of original exists)
 Location by 1894 property map in V-Ray Coal Co. office (G.M.W. 1949)
 Date..... Notebook No..... Page.....
 Looseleaf ref.....
 Map files No.....

Description of Location

Position in sec., 1/4 sec., 40 acres

..... feet from North line
400 feet from East line
700 feet from South line
 feet from West line



Sec. 20
 T 19 N.
 R 11 W.

Other description:.....

Depth 673" - 62" #6 coal

NO. 7 COAL
ACCORDING TO
Kenny Clegg map

Farm.....
 No.....
 Company G. C. Coal Co.
 No.....
 County No.....

Elevation..... ft.
 By.....

Method: Level, transit, alidade, hand level

Elevation of.....
 Height of point above ground.....
 Date..... Notebook..... P.....
 Looseleaf ref.....

Map files No.....
 Description of item: (drill hole, mine, etc.) Abd

County Vermilion Quadrangle Danville Index No. 1720 B1