

2407



Form 180 Blue

R - F

Highland C. C.

C. # 214

										h
										g
										f
										e
										d
										c
										b
										a
8	7	6	5	4	3	2	1			

Sec. 22

T. / N.
 R. / W.

Index No.

6722

↓ Mine Index 3528



FORM 180 W
ILLINOIS GEOLOGICAL SURVEY, URBANA



Highland Coal Co.

Company

St. Clair

Index No.

0722:84

d2 County No. 214

Belleville

Mine

Highland

200

Tons

Av. Dlv. Prod.

Anal. Face

Coal bed

84'

Sur. El.

535^{ft}

Depth

133^{ft}

Years

No.

Year

Car

No.

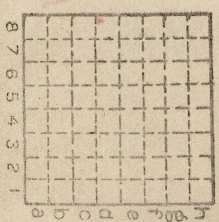
Year

Special features:

Officials:

See tabulations and location sheet. Also see McBee and explanation on back of the card.

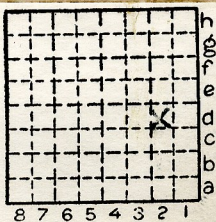
*See other side



Sec. 22
T. 1 N.
R. 8 W.
Index No.

(24662-1M-12-24)

By _____ Date _____
Quad. _____ Part _____
County St. Clair



Sec. 22
T. 1 N.
R. 8 W.

0722