



COAL MINE NOTES.
CONTINUED.

OPERATOR *Lebanon City Coal Co* MINE *Lebanon* 0130
 ENTRANCE *Shaft* NAME OF COAL BED #6
 ELEVATION *442* THICKNESS OF COAL *72"*
 DEPTH TO FLOOR *198* MAX. MIN. AV.
 ALTITUDE OF COAL *244*
 LOCATION OF SECTION *1st North of Main E. 5th Room 500' N.E. Shaft.*
 USED IN COAL DEPT. 1912

No.	SECTION.	In.
1	<i>Draw Slate</i>	<i>4</i>
2	<i>Boney Coal</i>	<i>7</i>
3	<i>Clean Coal</i>	<i>40</i>
4	<i>Blue Band</i>	<i>1 1/2"</i>
5	<i>Bottom Coal</i>	<i>1 3/2"</i>
6		
7		
8		
9		
10		
11		
12		
	Tape	Total
		<i>66</i>

SAMPLE No. *N23*
 CAN No. *7"*
 CONDITION *Dry 40"*
 GROSS WEIGHT *30 1/2"*
 TIME EXPOSED *30 min*
 NOT SHIPPED *1, 2, 4*
 NOT INCLUDED *1, 2, 4*



PHYSICAL PROPERTIES BY NUMBERS

Coal not of good quality, having small dirty bands thru it and the top coal boney. The boney coal and Draw slate is thrown out on the dump. Which has caught fire and is burning. Blue band is very adhesive. Numerous flakes of gypsum give the face a white appearance.

ROOF *Soapstone or shale 28' Draw Slate 3". Roof rather hard, but softer above, 18" above the coal limit of hard ledge.*
 FLOOR *Fire Clay 8'* bad roof.

DIP
 FAULTS, ETC. *Cleat very poor running NE + SW. No dike, horse backs, faults, or clay reins.*
 GAS

#1001 *Bull 16 p 220* 0130
 COLLECTOR *Wheeler* REFERENCE *N.B. 141, 70* DATE *12-17-07*
~~12-17-07~~ 29



COAL MINE NOTES.

0130

COUNTY *St Clair*

TOWN *Lebanon*

MAP No. ~~20~~ *30*

T. *2N*

R. *6W*

S. *30 near Centre NE 1/4*

OPERATOR *Lebanon City Coal Co.*

OFFICE *Lebanon*

MINE *Lebanon*

USED IN GUOP. REPT. 1912.

TIPPLE

ENGINES

BOILERS

DRUM

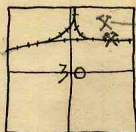
SHAFT

CAGE

HAULAGE *frammed by hand.*

CARS *2 ton boxes used.*

VENTILATION *natural.*



Belleuille
Breece
Folio

DRAINAGE

SPRINKLING

WORKING SYSTEM

MINING METHODS *shot off solid.*

COUNTY

SIZE OF ENTRIES—MAIN *8' to 10'* CROSS

ROOM *20' to 35'* NECK

SIZE OF PILLARS—MAIN CROSS

ROOM *25' to 30'*

SHAFT CHAIN

BARRIER

AMOUNT OF TIMBERING *Good many props needed.* SIZE

PROPORTION OF COAL UTILIZED

AMOUNT AND CHARACTER OF WASTE

ACREAGE OF COAL MINED

ACREAGE OF COAL REMAINING

PROPORTION OF MINE RUN AND SCREENED COAL

METHOD OF SIZING

RESCREENED

SIZES

PER CENT

PROPORTION AND SIZE OF WASHED COAL

DAILY OUTPUT *50 tons*

UTILIZATION

MARKETS *Domestic to Wagon trade*

FREIGHT RATES

GEN'L COAL REPT. #191

SELLING PRICES AT MINE *8¢ per bushel.*

~~20130~~ 0130

COAL LAND OWNED LEASED

HELD IN FEE

COST OF LAND OWNED LEASED

HELD IN FEE

ADDITIONAL NOTES

2g



LOCATION AND ELEVATION

Location: N side B&O side Highway No. R. R. R. R.

on top. map 226 Location sheet 13-87-42a

Elevation: Method, 1. Est. () ft. 2. Inst. (kind Plane Table) 445.5 ft. By WBR 1930 Data sheet

DEPTH

Authority To coal 192.5 ft. Authority Rail to rail ft. Top of coal above rail. (Est. Rule) ft. To coal ft.

ALTITUDE OF TOP OF COAL

By estimated data ft. By instrumental data 252.5 253 ft.

Thickness

Max. in. Min. in. Aver. 72 in.

GEOLOGICAL DATA

Mine notes, date 1907 1912 1930

Coop No. Pyr. inv. Coal Ash inv.

CHEMICAL DATA

Analyses Face U. I. 1907 1P. B. M. Others Car U. I. B. M. Others Org. Sulf U. I. B. M. Others Ash fusion U. I. B. M. Others Ash anal. U. I. B. M. Others U. I. B. M. Others

Classification

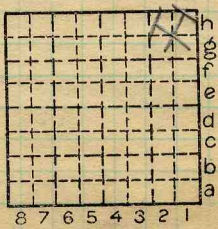
Misc. tests: Coking. Cleaning Boiler

Published descriptions:—

Railroad, Wagon, Idle, Abandoned

IDENTIFICATION

County No. 191 Coal No. 6 Part 1 Quad. Belleville County St. Clair



Sec. 30 T. 2 N. R. 8 E. W. Index No.

COAL MINE LOCATION AND DATA

0130.28

Abd



Town, Lebanon

Surface alt., 445.5 ft.

Local Authority,

Depth to coal, 192 1/2 ft.

Level: Auth., Mine Notes
W.B. Roe (1930)

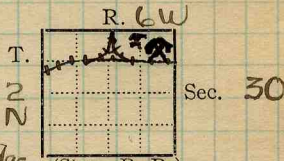
253.0 alt. top coal, 469 1/2 ft.

Thickness: Av. 66 in.

Max. in., Min. in.

Method, Planetable

R. R., BI + Ohio. SW.



Location: authority, Belleville Breese Folio

Closed on account of price fixed Coal Hqs. Sept. 1, 17 (local Index to mine notes) WBR (1930)

(Show R. R.)

Open 1906

Operator

Mine Name or No.

Closed as shipping mine 1922

19 Lebanon City Coal Co. Lebanon

Successor to Premier Coal's Mining Co.

Date

Succeeded by Peoples Coal Co.

Date

Succeeded by

Date

PRODUCTION.

U. S. No.

19									
----	--	--	--	--	--	--	--	--	--

This sheet may be wrong. see Peoples Coal Co. in The Bear.

Geol. Notes? Yes

Coop. No.

Coal secs? 1

Analyses No. 0001

GEN'L COAL REPT. 191 County

Examined by

Ref.

Coal bed name: Local SHIPPING MINE

Survey No. 6

County St. Clair

Index No. 0130

K. SHIPPING OR LOCAL COAL MINE. Abd



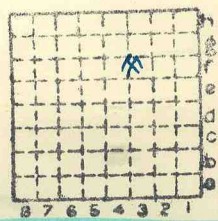
Form 180

R F

HERRIN

Premier ZMC

192



Sec. 30

T. 2 N. 8

R. 6 E. W.

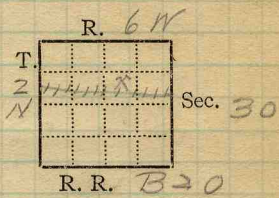
Index No.

MI 200

Mine Index 200



Mine Name or No., *Premier*
 1 mile *E* from *Lebanon*
 Operator, 191*1* *Premier Coal Mining Co*
 Operator, 191



Entrance, *shaft* Elev., *442* ft. (above, *500 level*)
 (below,
 Depth to bottom coal, *208* ft. Alt. *234*

SURFACE DATA.

- A. Topography, *About 75' relief.* See
 B. Surficial materials. (1) Character, *Till & loess*
 (2) Thickness, *60* (3) Effect on mining and shaft-sinking, of former drainage lines, underground water strata, etc. *No information*

- none* See
 C. Outcrops, (1) Character, See
 (2) Structure, See
 (3) Fossil horizons, See
 Collection No.,
 (4) Evidences of subsidence, See
 D. Note collection of mine maps, drill records and shaft logs.

See drill record sheet,

E. Notes on surrounding area,

GEN'L COAL REPT. 192

See

Coal bed name: Local, Survey No. *6*
 Collector, *Netzeband*
 Mine, *Premier* Co. *St. Clair* Index No. *0130166*
 L.—SURFACE SHEET (Geol.)



F. Thickness of rock above bed worked, *133'*

(1) Important variations,

See

G. Note presence of strata having important effect on mining,

Light grey shale, bad roof

See

- (1) Position, *Above coal*
- (2) Character, *Soft, light grey shale*
- (3) Persistence, *Thruout*
- (4) Other workable coal beds,

See

H. Cap rock, *Limestone*

(1) Thickness, *23' ±*

(2) Height above coal, *(30' ±)*

See

I. Immediate roof, *Soft, light grey shale*

(1) Thickness, *30' ±* (2) Contact with coal,

Clean & regular

(3) Horizontal variation, *None observed*

See

J. Draw slate. (1) Thickness, (2) Contacts

About 1' draws in some places

(3) Persistence, *In patches*

K. Coal bed: Max. *60* Min. *48* Av. *56* inches

(1) Benches, *3*

(a) Position, *4"-12" bony coal at top, middle coal to B.B., below B.B.*

(b) Persistence, *Thruout mine*

See

(2) Bedded impurities, kind, position in benches, persistence, ease of separation. *B.B. (3/4 to 1/2")*

grey shale, parts readily from coal.

4-8" bony coal & coal from 1"-3" below roof.

See

(3) Irregularities in continuity of bed (due to deposition, erosion, or movement, *None*

See

(a) Effect on mining, *None*

See

SECTION				
Ft.	In.	Name	Index	Sym.
60		Drift		
3		S.R.		
62		Soap		
7		Ls		
8		F.oly		
23		Ls		
30		Soap		
5		Coal		
40		Soap		
6		Coal		
130		Soap		
12		Rock		

Collector, *Netze band*

Coal: Survey No. *6*

Mine, *Premier* Co. *St. Clair*

Index No. *0130166*



K. (5) Physical character of coal in benches,

(a) Relative hardness, *Same as Belleville district.*

(b) Lustre,

(c) Fracture, *hackly*(d) Texture, *Laminated*

See

(6) Impurities in coal, other than bedded,

(a) Kind, *Pyrite lenses, calcite stringers*(b) Position and persistence, *In middle coal, very little thruout mine.*(c) Rejected, *No*

Ease of separation,

See

L. Floor: (1) Material, *Floor clay*(2) Thickness, *9" ±*(3) Variation, *Varies somewhat in thickness*(4) Note character, condition, tendency to heave, relation to undercutting commercial value. *Soft, medium dark grey, crumbly shale;**heaves upon standing; shooft from the solid; value unknown.*

See

(5) Clay sample No.

Location,

M. Stratigraphy,

(1) Fossiliferous horizons underground, *Grey roof shale contains**pelecypods.*

Collection No.

Location,

N. Notes on effect of deep drilling in coal mine areas.

See

Collector, *Netzeband*Coal: Survey No. *6* Mine, *Premier*Co. *St. Clair*Index No. *0130.6G*



INDEX

(36713-500-7-20)

I₃

The lower part of the roof is a series of layers of light gray and black shale. There are usually three layers of black shale ranging from $\frac{3}{4}$ to $1\frac{1}{2}$ " thick. The light gray shale is usually a little thicker ranging from 1 to $2\frac{1}{2}$ ".

The roof shale contains many small concretions.

Collector

Netzaband

Index No.

0130.6G

X- /

EXTRA NO 1

County

St. Clair



LOCATION AND ELEVATION

Location: S side B&O side Highway No. R. R. R. R.

on top. map 226 Location sheet 13 87-42a

Elevation: Method, 1. Est. () _____ ft.

2. Inst. (kind Plane Table) 443.2 ft.

By WBR 1930 Data sheet

DEPTH

Authority To coal 208 ft.

Authority Rail to rail _____ ft.

Top of coal above rail. (Est. Rule) _____ ft.

To coal _____ ft.

ALTITUDE OF TOP OF COAL

By estimated data _____

By instrumental data 235.2 235.2 ft.

Thickness

Max. in. Min. in. Aver. 52 in.

GEOLOGICAL DATA

Mine notes, date 1921 1930

Coop No. Pyr. inv. Coal Ash inv.

CHEMICAL DATA

Table with 4 columns: Analyses Face, U. I., B. M., Others. Rows include Car, Org. Sulf, Ash fusion, Ash anal.

Classification

Misc. tests: Coking. Cleaning Boiler

Published descriptions: MI 200

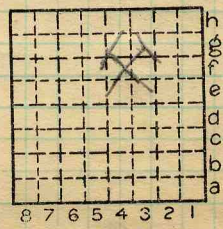
Railroad, Wagon, Idle, Abandoned

IDENTIFICATION

County No. 192

Coal No. 6 Part 1

Quad. Belleville County St. Clair



Sec. 30

T. 2 N. R. 6 W.

Index No. 0130.4 f

COAL MINE LOCATION AND DATA

Abd



Symbol Description Inches

Aug 7, 1931

Face of 2nd W

1 coal		2 1/2
2 bone		2 1/2
3 shale		1 1/4
4 coal		4 1
5 shale	Blue band	1/2
1 coal		13 1/2
2 coal		
2 coal		6 1/4

Total 61 1/2
Time 10:30

Condition - Damp, fresh
Time 3 hrs - min
Weight 21#
Excluded 1, 2, 3, 5,

(Scale: 1 division = 3 inches).

Sample No. N-21-115 Can No. 131 Lab. No. 80829

Collector, Netzeband Coal: Survey No. 6

Mine, Premier Co. St. Clair Index No. 0130.6G



Symbol Description Inches

Aug. 8, 1921

Room 4, 2nd E

1 coal	7 1/2
2 shales	2
3 coal	26 3/4
4 Charcoal	4 1/2
5 coal	9
6 Charcoal	1 1/2
7 coal	1 3/4
8 Blue Band	1 1/2
9 coal	15 1/2

Total 64 1/2
Time 9:00

Condition - Damp, fresh
Time 2 hrs 49 min
Weight 24
Excluded 1, 2, 8

65 1/4

(Scale: 1 division = 3 inches).

Sample No. N-21-113 Can No. 6212 Lab. No. 80827
 Collector, Netzeband Coal: Survey No. 6
 Mine, Premier Co. St. Clair Index No. 0130-66
 Q.—COAL SECTION SHEET.



Symbol

Description

Inches

Aug. 8, 1921

1st S. Entry

- 1 coal
 2 Bone & shale
 3 coal
 4 Black Jack
 5 coal
 6 shale
 7 coal
 8 Blue Band shale
 9 coal

Total 58 1/2

1 1/2
 4 1/4
 23 1/4
 4 1/4
 8
 1/4
 4 3/4
 12 3/4
 59 1/4

12.70
 Time 9:40
 2:30

Condition - Dry, fresh
 Weight 18#
 Time 2 hrs 30 min
 Excluded 1, 2, 8

(Scale: 1 division = 3 inches).

Sample No. N-21-44 Can No. 17795 Lab. No. 80828

Collector, Natzaband

Coal: Survey No. 6

Mine, Premier

Co. St. Clair

Index No. 0130.66

Q.—COAL SECTION SHEET.