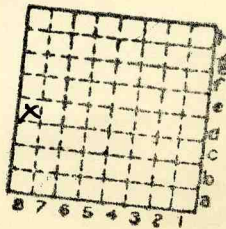


2407



Form 180

THOS. FRANSISKI



Sec. 15

T. 31 N.

R. 3 E.

Index No.

✓

mine index 2583



Mine originally operated by: (1)

THOS. FRANSISKI
KANGLEY

Date 1910

Original name or number:

Illinois Coal Report p.

LATER OPERATORS

Date	Operator	Name or No.
2 1911	Abd'd	J.C. Quade
3		
4		
5		
6		
7		
8		
9		
10		
11		
12		
13		
14		

* Also owners

See ownership sheet

Railroad, Wagon, Idle, Abandoned

IDENTIFICATION

County No.

Coal No.

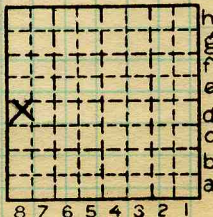
Quad.

80

Part 5

County

LA SALLE



Sec. 15

T. 31 N.

R. 3 E.

Index No.

2815

COAL MINE OPERATOR