

Illinois State Geological Survey

.8bc-.7a

(1530.0₂2-.1₂0)

August 29, 1930

In creek by mine shaft are blocks of gray ls. fine grained, foss. with Squamularia, Composita, etc. but outcrop in place is questionable.

2'± Interval

6" Sh. gray greenish calc. poorly bedded no foss. seen.

1" Sh. purplish gray calc.

1'-1'5" Ls. brownish gray, weathering to lt. and dk. brown, hd., fine grained, massive bedded, weathering to somewhat slabby blocks, Foss. slightly-Composita.

3'+ Sh. gray to olive gray, somewhat mottled with green and dk. green evenly bedded, fairly mass. slightly sandy, very calc. no foss. seen

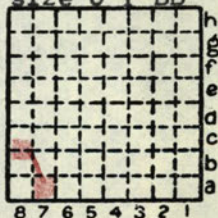
8"-1' Interval - probably sh. like above.

1'4" Sh. gray to bluish gray calc. well bedded, spotted, with white fragments of shells and foss. with other good shells of Composita, Squamularia, Spiriferina, Ambocoelia, Derbya, Spirifer

2-4" Ls. bluish to brownish gray, hard, nodular uneven upper and lower surfaces somewhat foss. though none well enough preserved to distinguish a persistent bed.

5" Sh. yellowish gray porous, rotten, very calc. weathers pale yellow, no foss. seen.

2-4" Ls. conglomeratic with pebbles of ^{dk}ls. also lighter colored ones. Pebbles up to 1/2" dia. tho usually smaller about the size of BB shot. Ls. is dull greenish
(cont. next page)



By S. E. Ekblaw Date 1930

Quadrangle Winchester

County Morgan Sec. 30 T 13N R 10W