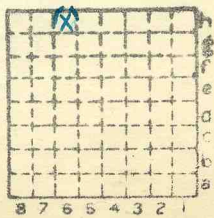


Peabody CC #16
452



Sec. 33
 T. 8 N.
 S.
 R. 1 E.
 W.
 Index No.

MI 166



Mine originally operated by: (1) Carterville & Big Muddy C.O.

Date
1903

Original name or number: **John**
Illinois Coal Report p.

LATER OPERATORS

Date	Operator	Name or No.
2	Peabody Coal Company	#16
3		
4		
5		
6		
7		
8		
9		
10		
11		
12		
13		
14		

* Also owners #See ownership sheet

Railroad, Wagon, Idle, Abandoned *Ref. 1930*

SHIPPING MINE

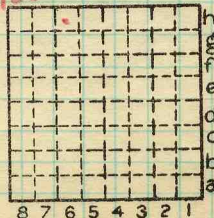
IDENTIFICATION

County No. **452** Coal No. **6**



Quad. **Herrin** Part

County **Williamson**



Sec. **33**

T. **8** S.

R. **1** E.
W.

Index No.

COAL MINE OPERATOR

0433 h6



LOCATION AND ELEVATION

Location: side R. R.
side R. R.
side Highway No.
on top. map Location sheet

Elevation: Method, 1. Est. () ft.
2. Inst. (kind Plane Table) 452.4 ft.
By W.B.R. (1933) Data sheet

DEPTH

Authority To coal ft.
Authority Rail to rail ft.
Top of coal above rail. (Est. Rule) ft.
To coal 79 ft.

ALTITUDE OF TOP OF COAL

By estimated data
By instrumental data 373 ft.

Thickness

Max. in. Min. in. Aver. 114 in.

GEOLOGICAL DATA

Mine notes, date
Coop No. Pyr. inv. Coal Ash inv.

CHEMICAL DATA

Analyses Face U. I. B. M. Others
Car U. I. B. M. Others
Org. Sulf U. I. B. M. Others
Ash fusion U. I. B. M. Others
Ash anal. U. I. B. M. Others
U. I. B. M. Others

Classification

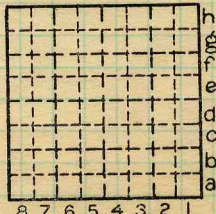
Misc. tests: Coking. Cleaning Boiler

Published descriptions:— MI 166 B62

Railroad, Wagon, Idle, Abandoned

IDENTIFICATION

County No. 452 Coal No. 6
Quad. Herrin
County Williamson



Sec. 33
T. 8 S.
R. 1 E.
Index No. 0433 26

COAL MINE LOCATION AND DATA

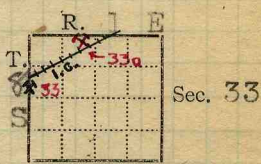
452.4

Town, ~~Brush~~ *Cumbria* 459
Local Authority,

Surface alt., ~~450~~ ft.
Depth to coal, *79.5* ft.
Alt. top coal, *373.0* ft.
Thickness: Av. *114* in.
Max. in., Min. in.

Level: Auth., *TES*; Bul-16-p285
Roe: *Pt. 1933*
Method, *H.L.*

R. R., *I.C.*



Location: authority,

GEN'L COAL REPT.

(Show R. R.)

Operator *#452* Mine Name or No.

1903 Carterville [&] Big Muddy Coal Co John

Successor to

Date

✓ Succeeded by

Date

Succeeded by

Date

Realty Coal Co #16
1615 McCornick Bldg, Chicago

PRODUCTION.

					Fiscal		U. S. No.
19	15				15	052	906
<i>27</i>	<i>521</i>	<i>Jan. only</i>					
<i>1928</i>	<i>Sale</i>					<i>Abd</i>	
				<i>26</i>			

Geol. Notes? *no*

Coop. No.

Coal secs.? *74*

Analyses No.

~~*27 25*~~

Examined by

Ref.

Coal bed name: Local *Abd*

Survey No. *6*

County *Williamson*

Index No. *0433a*

K.—~~ACTIVE~~ SHIPPING OR LOCAL COAL MINE.

sale 1927



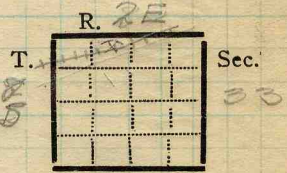
Town, *Cambria*
 Local Authority, *H.W. Plumtree*

Surface alt., *450* ft.
 Depth to coal, *85* ft.
 Alt. top coal, *365* ft.
 Thickness: Av. *102* in.
 Max. *132* in., Min. *90* in.

Level: Auth.,

Method, *Topog map, Herring Quad.*

R. R., *F.C.*



Location: authority, *Mine map in office*

(Show R. R.)

Operator

Mine Name or No.

19 *21* *Carterville & Big Muddy Coal Co* *John*

Successor to

Date

Succeeded by *Peabody Coal Co* *#16*

Date

Succeeded by

Date

PRODUCTION.

							U. S. No.
19				<i>1000 ton</i>	<i>app. av daily</i>		

Geol. Notes? *Yes* Coop. No. Coal secs? *3*

Analyses No. *12838-9-40; 1805-6.*

Examined by *Natzaband*

Ref. *Loose leaf*

Coal bed name: Local

Survey No. *6*

County *Williamson*

Index No. *0433.39*

K.-ACTIVE SHIPPING OR LOCAL COAL MINE.

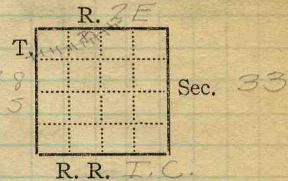
Duplicate

Mine Name or No., *John*

$\frac{1}{4}$ mile *NE* from *Cambria*

Operator, 1911 *Cartersville & Big Muddy C.Co*

Operator, 191



Entrance, *shaft* Elev., *450* ft. } above, *sea level*
{ below,

Depth to ~~coal~~ coal, *85* ft. Alt. *365*

SURFACE DATA.

A. Topography, *Rolling* See

B. Surficial materials. (1) Character, *Till*

(2) Thickness, *No informat* (3) Effect on mining and shaft-sinking, of former drainage lines, underground water strata, etc. *Much surface water comes into mine thru slips in the overlying shale In several places in the North the water comes in as a constant stream ($\frac{1}{4}$ ")*

C. Outcrops, (1) Character, See
(2) Structure, See
(3) Fossil horizons, See
Collection No.,
(4) Evidences of subsidence, See

D. Note collection of mine maps, drill records and shaft logs.

A.K. Elles - Herrin Supply

See drill record sheet,

E. Notes on surrounding area,

See

Coal bed name: Local,

Survey No. *6*

Collector, *Natzaband*

Mine, *John*

Co. *Williamson* Index No. *0433.39*

F. Thickness of rock above bed worked,

- (1) Important variations,

No information

See

G. Note presence of strata having important effect on mining,

Top coal & grey shale

See X1

- (1) Position, Shale above coal
- (2) Character, Light grey soft to massive
- (3) Persistence, All over mine
- (4) Other workable coal beds, None rept'd

See

H. Cap rock, Limestone

- (1) Thickness, No information
- (2) Height above coal, Reported to be

See

24'

I. Immediate roof, Gray shale

- (1) Thickness, +24' (2) Contact with coal, Clean but irregular
- (3) Horizontal variation, Some fissil shale

See X1

J. Draw slate. (1) Thickness, (2) Contacts

- (3) Persistence, Same in W. in the past.

K. Coal bed: Max. 132 Min. 90 Av. 102 inches

- (1) Benches, Two
- (a) Position, Above & below B.B.

Limestone rept'd
Shale

- (b) Persistence, Thruout mine.

See

- (2) Bedded impurities, kind, position in benches, persistence, ease of separation. Blue band (1 1/2 - 3")

Separates easily from coal

8 6 Coal

See

- (3) Irregularities in continuity of bed (due to deposition, erosion, or movement, Rolls with many

2 Floorclay

- (a) Effect on mining, Small slips in the shale

See X1

1 Div = 4'

See

Collector, Natzeband

Coal: Survey No. 6

Mine, John Co. Williamson

Index No. 0433.39

K. (5) Physical character of coal in benches,

- (a) Relative hardness, *Relatively soft compared to the coal in the immediate vicinity*
- (b) Lustre, *Top bright, bottom dull glance*
- (c) Fracture, *Blocky top & middle - bottom hackly*
- (d) Texture, *Laminated* See

(6) Impurities in coal, other than bedded,

- (a) Kind, *Pyrite bands & lenses, calcite stringers*
- (b) Position and persistence, *Pyrite bands bottom coal, lenses upper middle coal*
- (c) Rejected, *Bands & lenses ore*, Ease of separation, *1/2" thick.* See

L. Floor: (1) Material, *Floor clay*

- (2) Thickness, *20" - 24"*
- (3) Variation, *Very little variation in thickness or character*

(4) Note character, condition, tendency to heave, relation to undercutting commercial value.

Green shale, soft, heaves only when mined too wide, used to undercut upon, value unknown.

Squeezed in W. workings - too few pillars

See

(5) Clay sample No. Location,

M. Stratigraphy,

- (1) Fossiliferous horizons underground, *Roof shale contains remains of plant fragments.*

Collection No. Location,

N. Notes on effect of deep drilling in coal mine areas.

See

Collector, *Netzaband* Coal: Survey No. *6*

Mine, *John* Co. *Williamson* Index No. *0433.39*

K₃

Roll 2800' from bottom in Main North
200' long Coal drops 5'. Stringers of
coal up to 6" thick thruout lower 5 or 6'
of shale. Shale - light grey - massive -
somewhat shattered by minor slips in
all directions

T₃

&

G

In some few places along the N. entry 6-18"
of fissil shale was just above the coal.
This shale would draw but wherever the
top coal comes down, the shale falls for
several feet and continues to fall unless
adequately timbered.

Wherever possible 20-24" of top coal
is left as a roof.

Operator, *Carterville & Big Muddy Coal Co.* Date *June 30, 1941*
 Mine, *John* Sec. *33* T. *88* R. *2E*
 Located, *4 W. miles from Hartin*
 Location in mine, *Room 10 in Main N; 60' from face.*

GRAPHIC SECTION		DESCRIPTION OF SECTION (AT POINT SAMPLED)		
In.	No.	No.	(Note character and thickness of roof)	Inches
			1 Shale	
20	1	1	Coal Roof 20" Flpp	
		2	Coal stringers pyrite & calcite	15
		3	Charcoal	$\frac{1}{4}$
		4	Coal	38
		5	Pyrite	$\frac{1}{8}$
15	2	6	Coal	10
		7	BB shale	1 $\frac{1}{2}$
$\frac{1}{4}$	3	8	Coal	12
		9	Pyrite	$\frac{1}{4}$
		10	Coal	10
			⋮	
38	4		Tape 85 $\frac{1}{2}$	
$\frac{1}{8}$	5			
10	6			
$11\frac{1}{2}$	7		(Note character and thickness of floor)	
			Total thickness of coal.	105 $\frac{1}{2}$
12	8		Condition, <i>As Mined</i>	Time, hr. min.
$\frac{1}{4}$	9		Wt. Gross, <i>25</i> lbs.	Net, lbs.
10	10		What Nos. shipped by Co.?	
			Excluded from sample: No. <i>1, 7</i>	
			Sample represents <i>84</i> in.	tons.
			Impurities? How do they occur?	

Sample No. _____ Can No. *W-2142* Lab. No. *12838*

Collector, *Wilson* Coal: Survey No. *6*

Mine, *John* Co. *Williamson* Index No. *0433.39*

Operator, *Carterville & Big Muddy Coal Co.* Date *June 30, 1921*
 Mine, *John* Sec. *33* T. *8S* R. *2E*
 Located, *4* miles from *Herrin*
 Location in mine, *Cross Cut 25' from face of 10th W. off 14th W.*

GRAPHIC SECTION		DESCRIPTION OF SECTION (AT POINT SAMPLED)		
In.	No.	No.	(Note character and thickness of roof)	Inches
24	1		Shale	
			1. Coal Roof	24"
			2. Coal - stringers & lenses of pyrite	30
			3. Charcoal	$\frac{1}{8}$
			4. Coal	4.0
			5. BB shale & coal	2
		6. Coal	21	
30 1/2	2		Tape 94"	
1/3	3			
40	4		(Note character and thickness of floor)	
			Total thickness of coal.	118
2	5		Condition, <i>As Mined</i>	Time, hr. min.
			Wt. Gross, <i>20</i> lbs.	Net, lbs.
			What Nos. shipped by Co.?	
21	6		Excluded from sample: No. <i>1.5</i>	
			Sample represents <i>92</i> in.	tons.
			Impurities? How do they occur?	

Sample No. _____ Can No. *W-21-43* Lab. No. *12839*
 Collector, *Wilson* Coal: Survey No. *6*
 Mine, *John* Co. *Williamson* Index No. *0433.39*

Operator, *Carterville & Big Muddy Coal Co.* Date *June 30, 1921*
 Mine, *John* Sec. *33* T. *88* R. *25*
 Located, *4* miles from *Herrin*
 Location in mine, *Face of 10th W.*

GRAPHIC SECTION		DESCRIPTION OF SECTION (AT POINT SAMPLED)		
In.	No.	No.	(Note character and thickness of roof)	Inches
36	1		<i>Shale</i>	
			1. <i>Coal Roof 36"</i>	
			2. <i>Coal stringers of pyrite</i>	<i>3 1/8</i>
			3. <i>Parting charcoal</i>	<i>5 1/8</i>
			4. <i>Coal</i>	<i>2 1/2</i>
			5. <i>B.B. soft shale</i>	<i>23</i>
		6. <i>Coal</i>		
<i>3 1/8</i>	<i>2 3/8</i>		<i>Tap 80"</i>	<i>79 5/8</i>
<i>51</i>	<i>4</i>			
(Note character and thickness of floor)				
Total thickness of coal.				<i>116</i>
<i>2 1/2</i>	<i>5</i>	Condition, <i>As Mined</i>	Time, hr. min.	
		Wt. Gross, <i>25</i> lbs.	Net, lbs.	
<i>23</i>	<i>6</i>	What Nos. shipped by Co.?		
		Excluded from sample: No. <i>1.5</i>		
		Sample represents <i>77 1/2</i> in. tons.		
		Impurities? How do they occur?		

Sample No. _____ Can No. *W-21-44* Lab. No. *12840*

Collector, *Wilson* Coal: Survey No. *6*

Mine, *John* Co. *Williamson* Index No. *0433.39*