

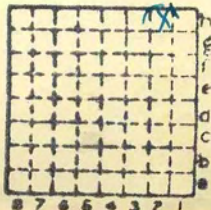


anshaft is \* 35,

Pantlo. Ek etc

✓ Miss Index # 193

22



Sec. 35

T. 14 N.

R. 6 W.

Index No.



Mine originally operated by: (1)

Panther Creek Coal Co #1  
Auburn.

Date 1918.

Original name or number:

Illinois Coal Report p.

LATER OPERATORS

Date	Operator	Name or No.
2		
3		
4		
5		
6		
7		
8		
9		
10		
11		
12		
13		
14		



Map next page

\* Also owners

# See ownership sheet

Railroad, Wagon, Idle, Abandoned 1932

SHIPPING MINE

IDENTIFICATION

County No. 22

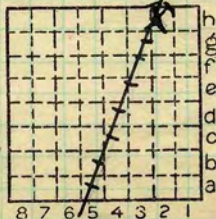
Coal No. 270

6

Quad. 173

Part 4

County Sangamon



Sec. 35

T. 14 N.

R. 6 W.

Index No.

2035

COAL MINE OPERATOR



Location and Elevation Data

Location: Exact ~~Approximate~~

(Approximate only if no trace or record of original exists)

Location by W. B. Roe

Date 4-27-31 Notebook No. 602 Page 13-104

Looseleaf ref. \_\_\_\_\_

Map files No. 12-83-10d

Description of location

Position in sec., 1/4 sec., 40 acres

\_\_\_\_\_ feet from North line

900 feet from East line

4850 feet from South line

\_\_\_\_\_ feet from West line



Sec. 35  
T. 14 N.  
R. 6 W.

Other description: \_\_\_\_\_

MW 1931  
7' coal at 258'

Farm \_\_\_\_\_  
No. \_\_\_\_\_  
Company Panther Crk. Mines  
No. 1  
County No. 22

Elevation 626.6 ft.

By W. B. Roe

Method: Level, transit, alidade, hand level

Elevation of Alidade  
Rail

Height of point above ground 0

Date 4-27-31 Notebook 602 Page 13-104

Looseleaf ref. \_\_\_\_\_

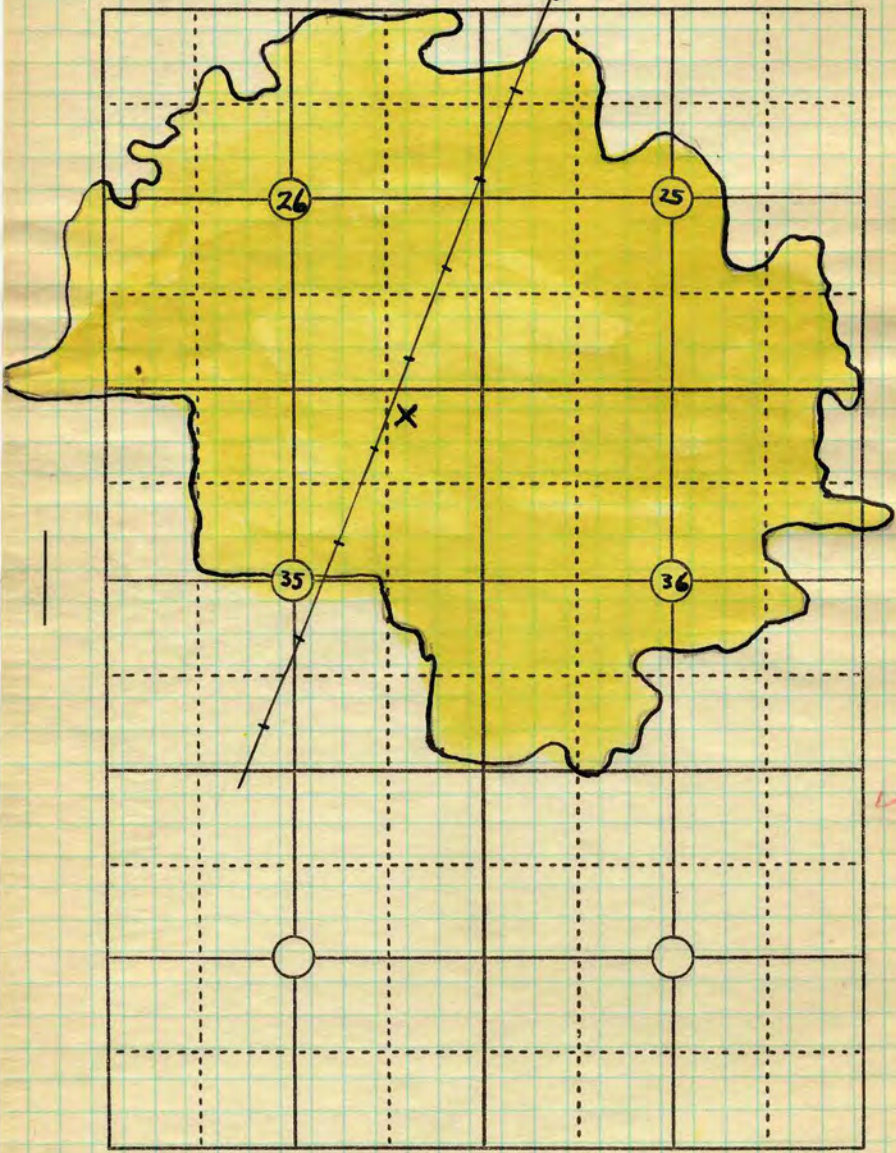
Map files No. 12-83-10d

Description of item: (drill hole, mine, etc.) Mine shaft

Depth to #6 270' (top) 7' thick

SHIPPING MINE

County Saugamon Quadrangle Dixmore Index No. 2035



T14N R6W

Map.

Date 3-31-'32

Operator

Name or No.

ARR

Panther Creek

County Sangamon

Index No.

2035

1



Period						Tons						
Mo.	Day	Year	Mo.	Day	Year							

SUMMARIES

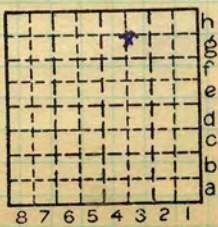
No.	to	No.				
1917		1932	7	363	407	

Railroad, Wagon, Idle, Abandoned  
33, 34, 35  
 IDENTIFICATION

County No. 22 Coal No.

Quad. Part

County Sangamon



Sec. 35  
 T. 14 N.  
 R. 6 W.  
 Index No.  
2035 g3



Town, Auburn  
 Local Authority,  
Mr. Solomon  
 Level: Auth.,

Surface alt., 612 ± Est ft.  
 Depth to coal, 258 ft.  
 Alt. top coal, 354 ft.  
 Thickness: Av. 84 in.  
 Max. 120 in., Min. 48 in.

Method,

R. R., C & A



Location: authority, Letter Robt C. Solomon  
12/13/17

Mine Map  
 Operator

Mine Name or No.

Over 6  
1912-30

19 21 Panther Creek Coal Co. Panther Creek  
#1

Successor to  
 Date  
 Succeeded by  
 Date  
 Succeeded by  
 Date

QV

**PRODUCTION.**

							U. S. No.
1921	23	50	Tons				
<u>1931</u>	<u>456</u>	<u>238</u>					
<u>1932</u>	<u>115</u>	<u>731</u>					<u>1930 #4</u>
<u>W. E. Dawson, 56th St</u> <u>Springfield.</u>							

Geol. Notes? Yes Coop. No. Coal secs? 3

Analyses No. 81319-20-21-22

**GEN'L COAL REPT. 22**

Examined by Thurston & Netzeband. Ref.

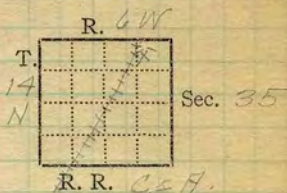
Coal bed name: Local **SHIPPING MINE**, Survey No. 6

County Sangamon, Index No. 2035.78

K.—ACTIVE SHIPPING OR LOCAL COAL MINE. Duplicate



Mine Name or No., *Panther Creek*  
*3* mile *NE* from *Auburn*  
 Operator, 191 *Panther Creek Coal Co.*  
 Operator, 191



Entrance, *shaft* Elev., *612* ft. { above,  
 Depth to *bottom* coal, *258* ft. { below,  
 Alt.

SURFACE DATA.

- A. Topography, *Flat* See
- B. Surficial materials. (1) Character, *Till*
- (2) Thickness, *12'* (3) Effect on mining and shaft-sinking, of former drainage lines, underground water strata, etc. *No information*

- C. Outcrops, (1) Character, See  
 (2) Structure, See  
 (3) Fossil horizons, See  
 Collection No.,  
 (4) Evidences of subsidence, See
- D. Note collection of mine maps, drill records and shaft logs.

See drill record sheet,

- E. Notes on surrounding area,

See

Coal bed name: Local, Survey No. *6*

Collector, *Netzeband*

Mine, *Panther Creek* Co. *Sangamon* Index No. *2035.78*

L.—SURFACE SHEET (Geol.) *County 22*

F. Thickness of rock above bed worked, *246'*  
 (1) Important variations, *No information*

See

G. Note presence of strata having important effect on mining,  
*Shale roof.*

See *X1*

- (1) Position, *Above coal*
- (2) Character, *Varies from black, fissile to white, massive shale*
- (3) Persistence, *Varies thruout mine.*
- (4) Other workable coal beds, *None above. No. 5, 5' thick, 60' below No. 6*

See

H. Cap rock, *Lime stone.*

- (1) Thickness, *3'*
- (2) Height above coal, *Featheredge to 6'*

See *X1*

I. Immediate roof, *Shale.*

- (1) Thickness, *0-6'* (2) Contact with coal, *Clean & regular.*
- (3) Horizontal variation, *Varies from black,*

See *X1, 2 & 4*

J. Draw slate. (1) Thickness, (2) Contacts

*Call "clog" under ls. draw slate.*  
 (3) Persistence, *In patches.*

K. Coal bed: Max. *120* Min. *48* Av. *84* inches

- (1) Benches, *3*
- (a) Position, *Top, middle & bottom.*

(b) Persistence, *Thruout mine.*  
 See

- (2) Bedded impurities, kind, position in benches, persistence, ease of separation. *B.B. (grey shale 1/2')*

*separates easily from coal as do the other impurities. Shale band, 1-1 1/2" thick, 1' to 3' from top.*

See

- (3) Irregularities in continuity of bed (due to deposition, erosion, or movement, *Slips & limestone*

*projections.*  
 (a) Effect on mining, *None.*

See *X3*

SECTION				
Ft.	In.	Name	Index	Sym.
12		Till	B	
2		Hardpan	F	
238		B. sh.	F	
4		LS	F	
1/2		sh.	F	
2		sh	H	
2		Coal		

Collector, *Natzeband*  
 Mine, *Panther Creek* Co. *Sangamon*  
 M.—UNDERGROUND SHEET (Geol.)  
*county #22*

Coal: Survey No. *6*  
 Index No. *203578*



## K. (5) Physical character of coal in benches,

(a) Relative hardness, *Same as Montgomery County coal*(b) Lustre, *Bright gloss (1/4 - 1/2) top, bright & dull (1/6 - 1/2) middle & bottom.*(c) Fracture, *Hackly. No well developed cleat.*(d) Texture, *Laminated.* See *X3*

## (6) Impurities in coal, other than bedded,

(a) Kind, *Pyrite bands & lenses, abundant calcite f.f. in upper*(b) Position and persistence, *pyrite stringers below B.B. coal*(c) Rejected, *Lenses over 1/2".* Ease of separation, *Easily.* SeeL. Floor: (1) Material, *Floor clay 15. below.*(2) Thickness, *1" to 7".*(3) Variation, *No variation in character*(4) Note character, condition, tendency to heave, relation to undercutting commercial value. *Light to medium grey, soft, plastic**when wet, many carbonaceous fragments; does not heave much; shoot coal from the solid; value unknown.*See *X3*

(5) Clay sample No.

Location,

## M. Stratigraphy,

(1) Fossiliferous horizons underground,

Collection No.

Location,

## N. Notes on effect of deep drilling in coal mine areas.

See

Collector, *Netzeband*Coal: Survey No. 6 Mine, *Panther Creek* Co. *Sangamon*Index No. *2035-78*

N.—UNDERGROUND SHEET (Geol.)

*County #22*



INDEX

(36713-500-7-20)

I<sub>3</sub>

The roof conditions vary in different places  
at the <sup>shaft</sup> bottom the roof is lime stone  
with only a parting of gray shale  
between it and the coal.

There is usually a massive black shale  
above the coal from 1" to 6" in thickness.  
Above this is a crumbly dark gray to  
black shale from a feather edge to  
6" Above this is limestone with an  
uneven lower contact.

In the Main N. at the face, there is  
a medium gray shale immediately  
above the coal, the limestone rests  
upon this.

A fall in the 10th W. off the 1st S. disclosed  
the following, from bottom to top

- 1) black shale, massive, fossiliferous 10"
- 2) black shale, crumbly, full of slips. 11"
- 3) Limestone (Normally roof), this lenses  
out laterally, and was absent from one  
side except for lenses about 4"  
thick and 3' across. 0-12"

4) Coming down over these lenses and  
filling the place normally occupied by  
the limestone is a medium gray shale  
In the absence of the limestone, this  
rests upon the shale below with the  
same distinct, uneven contact as the  
lime normally has. 0-12"

5) a darker shale, rather crumbly at the  
base but becoming more massive at  
the top, Green streaks 3 1/2'

6) Limestone, hard, fossiliferous,  
lower contact rough, but no rolls  
or projections extend downward  
over 3"



T<sub>3</sub>

In some places there is a black shale overlain by crumbly gray or black shale above this is a medium gray sandy shale or sandstone in the place usually occupied by the limestone. These conditions do not extend very far as within 20' on either side, the limestone appears.

The sandstone, and shale makes a very bad roof whereas the limestone makes an excellent roof. Where the lower limestone is absent, the roof is likely to fall clear to the second limestone and requires heavy timbering.

Above this is a sandy sh. medium gray with darker shale partings.

K3 Slip 1605' from bottom in Main E.  
Trend 53°W, dip 34°W, displacement  
of coal 18". West downthrown side.  
Another side 15' further of practically  
the same size, trend & dip. The  
slip does not extend more than 12"  
into the downthrown coal. Grey shale  
roof.

L3 The floor clay varies considerable in  
thickness but, is not, as might be  
expected, thickest on the hills. The  
clay is often found to be thinnest  
there, which would apparently show  
that the clay was laid down on an  
erosional surface.

K4 The coal is found to be thickest in  
the low places or swags. It runs up  
to 10' in some of the swags. The  
thinnest coal is found under the  
limestone projections. The hills in  
the mine are apparently not affected  
to any great extent by the dip  
of the underlying rocks as they  
have no definite or uniform direction.

L5b The top coal consists of layers of bright &  
glance coal  $\frac{1}{16}$  to  $\frac{1}{2}$ " thick, bright predominating.  
Middle coal consists of layers of dull & bright with  
dull predominating. Coal below blueband consists  
of layers of dull & bright with bright pre-  
dominating. All the layers run from  $\frac{1}{16}$  to  $\frac{1}{2}$ "  
thick.

The top coal appears brightest and gives  
a semichonchoidal fracture



I<sub>3</sub>

The lower black shale is fissile at the contact with the coal but grades into massive shale upward. This shale has a smooth, regular contact with the coal and separates clean. Laterally this shale grades into a massive, soft, dark grey shale 2"-6" thick which draws with the coal.

Collector *Netzband*Index No. *2035.78*X- *4 County #22*EXTRA NO. *4*

County

*Sangamon*

Operator, *Panther Creek Coal Co* Date *Aug. 29, 1921*  
 Mine, *Panther Creek* Sec. *35 T. 14 N R. 6 W*  
 Location in mine, *Face of Main N.*

GRAPHIC SECTION		DESCRIPTION OF SECTION (AT POINT SAMPLED)	
In.	No.	No.	(Note character and thickness of roof) Inches
			<i>Black shale.</i>
			<i>1 Coal (left as roof) App. 12"</i>
			<i>2 Coal 5</i>
			<i>3 Pyrite band 1/8</i>
			<i>4 Coal 10 1/2</i>
			<i>5 Grey sh, pyrite &amp; charcoal band 1 1/2</i>
			<i>6 Coal 2 3/4</i>
			<i>7 Pyrite lens 1/4</i>
			<i>8 Coal 3 3/4</i>
			<i>9 Pyrite lens 1 1/4</i>
			<i>10 Coal 2 1 1/2</i>
			<i>11 Grey shale B.B. 3/4</i>
			<i>12 Coal 1</i>
			<i>13 Pyrite band 1/4</i>
			<i>14 Coal 11 1/2</i>
			<i>15 Pyrite band 1/4</i>
			<i>16 Coal 14 1/2</i>
			<i>Light grey, soft floor clay</i>
			<i>Tap 74 1/2</i>
			(Note character and thickness of floor)
			Total thickness of coal. <i>74 3/4</i>
			Condition, <i>Dry, fresh.</i> Time, <i>4 hr. 40 min.</i>
			Wt. Gross, <i>24 lbs.</i> Net, <i>4 lbs.</i>
			What Nos. shipped by Co.?
			Excluded from sample: No. <i>5, 9, 11</i>
			Sample represents <i>7 13/8</i> in. tons.
			Impurities? How do they occur?

(1 division = 3 in.)

Sample No. *F-21-31* Can No. *20781* Lab. No. *81319*  
 Collector, *Thurston* Coal: Survey No.   
 Mine, *Panther Creek* Co. *Sangamon* Index No. *2035-78*



Operator, *Panther Creek Coal Co* Date *Aug. 29, 1921*  
 Mine, *Panther Creek* Sec. *35* T. *14N* R. *6W*  
 Location in mine, *Face of Back Main E.*

GRAPHIC SECTION		DESCRIPTION OF SECTION (AT POINT SAMPLED)	
In.	No.	No. (Note character and thickness of roof)	Inches
		Limestone	
		"Drainslate" <i>App 4"</i>	
		1 Coal	<i>17 1/4</i>
		2 Pyrite	<i>1/8</i>
		3 Coal	<i>10 1/2</i>
		4 Gray shale band	<i>1</i>
		5 Coal	<i>6 1/4</i>
		6 Pyrite lens	<i>5/8</i>
		7 Coal	<i>14 1/4</i>
		8 Pyrite lens	<i>5/8</i>
		9 Coal	<i>7 3/4</i>
		10 Gray shale B, B.	<i>1/2</i>
		11 Coal	<i>13 1/4</i>
		12 Pyrite lens. <i>27 3/4</i>	<i>1/4</i>
		13 Coal	<i>3 1/4</i>
		14 Pyrite lens	<i>1/4</i>
		15 Coal	<i>19</i>
		16 Pyrite & charcoal lens	<i>1/4</i>
		17 Coal	<i>3</i>
		<i>Tape 86 1/2</i>	
		(Note character and thickness of floor)	
		Total thickness of coal.	<i>86 5/8</i>
		Condition, <i>Damp, fresh</i>	Time, <i>3 hr. 26 min.</i> <i>1547</i>
		Wt. Gross, <i>2 3</i> lbs.	Net, <i>4</i> lbs. <i>12:21</i>
		What Nos. shipped by Co.?	
		Excluded from sample: No. <i>7, 6, 8, 10</i>	
		Sample represents <i>83 7/8</i> in. tons.	
		Impurities? How do they occur?	

(1 division = 3 in.)

Sample No. *FK-32* Can No. *917* Lab. No. *81320*  
 Collector, *Thurston* Coal: Survey No. *6*   
 Mine, *Panther Creek* Co. *Sangamin* Index No. *2035.78*

Operator, *Panther Creek Coal Co.* Date *Aug. 29, 1921*  
 Mine, *Panther Creek* Sec. *35* T. *14N* R. *6W*  
 Location in mine, *Face of 9th W off 2nd S*

GRAPHIC SECTION		DESCRIPTION OF SECTION (AT POINT SAMPLED)		
In.	No.	No.	(Note character and thickness of roof)	Inches
			<i>Black fossil shale</i>	
			<i>1 Coal (left as roof) App 18"</i>	<i>Dry bright wood shales</i>
			<i>2 Coal</i>	
			<i>3 Pyrite band</i>	
			<i>4 Coal</i>	
			<i>5 Charcoal band</i>	
			<i>6 Coal</i>	
			<i>7 Pyrite &amp; charcoal lens</i>	
			<i>8 Coal</i>	
			<i>9 Grey shale band</i>	
			<i>10 Coal</i>	
			<i>11 Grey shale B.B.</i>	
			<i>12 Coal</i>	
			<i>13 Tape 80</i>	
			<i>Flour clay</i>	
			(Note character and thickness of floor)	
			Total thickness of coal.	<i>80</i>
		Condition, <i>Dry, fresh</i>	Time, <i>1 hr. 50 min.</i>	<i>370</i>
		Wt. Gross, <i>27 lbs.</i>	Net, <i>4 lbs.</i>	<i>210</i>
		What Nos. shipped by Co.?		
		Excluded from sample: No. <i>7, 9, 11,</i>		
		Sample represents <i>78</i> in. <i>1</i> tons.		
		Impurities? How do they occur?		

(1 division = 3 in.)

Sample No. *T-21-33* Can No. *231* Lab. No. *81321*  
 Collector, *Thurston* Coal: Survey No.   
 Mine, *Panther Creek* Co. *Sangamon* Index No. *203578*

R.—COAL SAMPLE SHEET.  
 County # *22*



from Illinois State Journal

6/3/43 - Panther Creek No 1 75 to be reopened

from the Sangamon Valley Collection, Lincoln Library, Springfield, IL

By CAC Date 9/93

Quadrangle \_\_\_\_\_

County Sangamon Sec. \_\_\_\_\_ T \_\_\_\_\_ R \_\_\_\_\_

mi 193

