

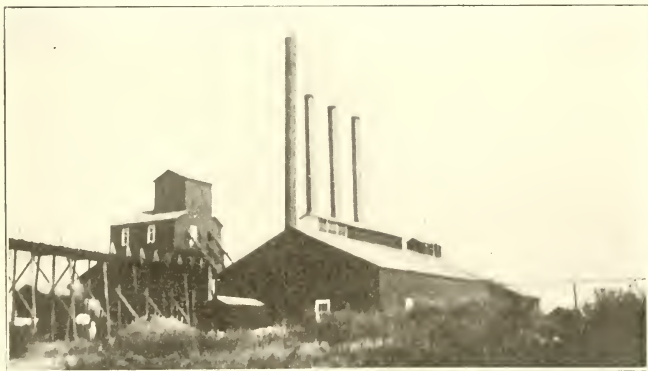
A complete table follows, giving the total tonnage by counties for the years 1909 and 1910, with the increase or decrease in each county:

Counties.	Total Output in Tons, All Grades.		Increase.	Decrease.
	1909.	1910		
Christian.....	1,380,515	1,317,487		63,028
Edgar.....	280	371	91	
Macon.....	197,633	265,530	67,897	
Moultrie.....	4,800	5,520	720	
Shelby.....	164,095	154,393		9,702
Vermilion.....	2,221,634	2,033,467		188,167
Total.....	3,968,957	3,776,768	68,708	260,897
Net decrease.....				192,189

The coal industry has experienced a decided improvement in the last year in this district; this is most noticeable in Vermilion county.

The mines formerly owned by the Michael Kelly heirs, which have been operated by a number of persons in the past few years, was on November 1, 1909 taken over by the Bunsen Coal Company. This property was of great value to the mining industry in this county, and had been allowed to degenerate until it was in a very bad shape. The frequent changes of management together with the lack of capital to operate all of their properties resulted very disastrous to these mines, and as a result, the business people of this county, and especially of Westville, suffered accordingly.

On last November there were only three mines operating in the vicinity of Westville, where the above properties are located: Mines numbers 2, 3 and



Bunsen Coal Co. No. 3—Westville.

5 of the Kelly property had been abandoned; and, while Numbers 2 and 5 were abandoned temporarily, it was doubtful whether they would have ever opened if they had remained the property of the Kelly heirs. Mine No. 3

had been abandoned for over five years, and was entirely dismantled, and no thought was ever entertained by anyone for its re-opening; but when the Bunsen Coal Company took over this property, work was started to rebuild and renovate all of these mines and I cannot commend too highly the work accomplished by that company to date.

The company spent thousands of dollars in cleaning up and rebuilding and replacing old machinery with new; and has also been very energetic in placing the mines in a first class condition.

I especially wish to commend the management, Mr. C. F. Lynch, General Superintendent, and Mr. J. A. Halbert, superintendent of these mines, for the earnest and hearty co-operation to lessen the dangers of coal mining in the mines of their company.

This company has established an emergency hospital at each of their mines, and equipped them with a first aid equipment, and are also instructing certain employes in the work of first aid to the injured.



First Aid Hospital—Bunsen Coal Co.

This is a very humane step, when you see a man brought up out of the mine injured and taken into one of these small inexpensive first aid hospitals, and made as comfortable as it is possible to make an injured man, you will wonder why they are not provided at all times, especially when you see a man brought to the top with no provisions made for his reception, and taken into the blacksmith shop or engine room where his treatment frequently does more harm than good and I hope that the next Legislature will pass a law requiring every mine in the State to make the same provisions as here noted.

The cost of constructing and equipping a small first aid hospital such as is suggested above is about as follows:

Building	\$48 00
Blankets and stretcher	11 80
Tanks, pans and chairs	6 00
First aid package	5 25
Two Waukesha Water tanks	6 00
Total	\$77 05

In addition the installation of the fire fighting equipment, the Bunsen Coal Company has gone farther than the law requires, and have placed in each of its mines a thorough fire fighting equipment such that are second to none

in the State of Illinois. The company is also building a stand pipe that will hold 300,000 gallons of water for the purpose of giving protection to their surface property. This company has also made a radical departure from the old system by taking care of the injured men in its employ; by creating a system of compensation for injuries received; one however, that I think is inadequate as it requires the person injured to give up his right to recover in any manner for injuries received, from the negligence of the company, before he can participate in its benefits. Further the amounts are not sufficient in the plan in force; yet it seems to me that the Bunsen Coal Company by adopting this crude plan, recognizes the injustice done an employé who is killed or injured by allowing him or his dependents to suffer for the necessities of life, when he has committed no greater crime than trying to earn a living mining coal.

Mr. Hugh Shirkey, who was formerly general manager for the Hammond Coal Company at Westville, has organized the Fairmount Coal Company, and bought out the Jordan Coal Company at Bennett's Station. Mr. Shirkey has made a shipping mine out of this property, which was formerly operated for local trade only. The company equipped the mine in an up-to-date manner in the reference to the improvements of mines, you will see the record of the new buildings and machinery that has been installed.

Mr. Glen Traer has organized the Traer Coal Company, which has started to open a mine between Danville and Grape Creek; I am informed that it is the intention of this company to operate extensively in the holdings of the Danville Belt Coal Company.

Mr. L. T. Mauch, who is general manager of the Tilton Coal Company at Vandercook has sunk a new mine just south of the old mine and has complied with the new law relating to the fire proofing of the shaft. The mine is concreted from top to bottom.

The Brazil Block Coal Company that operates the mines of the Dering Coal Company has re-opened mines numbers 2 and 4, which had been closed temporarily for some months.

I predict that Vermilion county will give to the world more coal next year than it has ever produced before.

IMPROVEMENTS IN MINES.

The Fairmount Coal Company, Fairmount, Vermilion county, has built a brick engine room, brick blacksmith shop, brick office and a brick fan house, also a new wooden tippie. This company installed a new sinker Davis engine 16 by 32 inches, with a four foot drum, two Atlas boilers, a fourteen foot Crawford and McCrimmen fan. Shaker screen of the Parker type, two new cages build by the Eagle Iron Works, of Terre Haute and a small electric generator, for the purpose of lighting the bottom and top. The company has also built one and a half miles of switch tracks.

The Tilton Coal Company, Vandercook installed a new pair of engines at its new mine, and put in a new boiler also erected a tippie with a shaker screen.

The Bunsen Coal Company has made extensive improvements at its No. 1, 2, 3, 4 and 5 mines as follows: At No. 2 mine a new 150 H. P. horizontal tubular boiler has been installed; 150 new mine cars put into the mine; new timbering and curbing erected in the air and hoisting shafts; the ventilating fans and the fan house rebuilt; the old timbers in the shaft bottom have been removed and brick piers and steel I beams put in their places; a Holmes automatic car lift installed; mine haulage roads repaired, including the relaying of the main west haulage road with new 40 pound steel rails; electric light and trolley wiring renewed both inside and out; main west and main north air courses have been cleaned throughout their entire length; two hundred brick and concrete stoppings have been constructed between the inlet and outlet along the main west and main north air courses; a complete sprinkling and alarm system put in and a perfect stable constructed with brickpiers and with steel beam supports, also fire proof feed boxes.