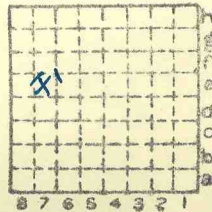


Jeffries CC #1

840



Sec. 3

T.	9	11
R.	7	10
		E.
		W.

Index No.

✓



Mine originally operated by: (1) Jeffries Coal Co.

Date 1935

Original name or number: #/
Illinois Coal Report 1935 p. 250

LATER OPERATORS

Date Operator Name or No.

2 1936 abandoned (Nos, 223 opened)

3

4

5

6

7

8

9

10

11

12

13

14

* Also owners

#See ownership sheet

Railroad, Wagon, Idle, Abandoned Strip

I.C.

IDENTIFICATION

County No. 840

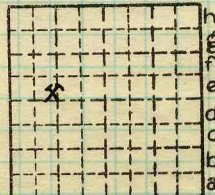
Coal No. *Dirt + 3*

6

Quad. Herring

Part

County Williamson



Sec. 3

T. 9 S.

R. 1 E.

Index No.

8 7 6 5 4 3 2 1

COAL MINE OPERATOR

0503-e-



(Sheets)

COAL PRODUCTION

(Sheet)

No.	Period						Tons
	Mo.	Day	Year	Mo.	Day	Year	
10	1	1	1936	12	31	1935 1936	1 284 4 107 <hr/> 5 391

#1

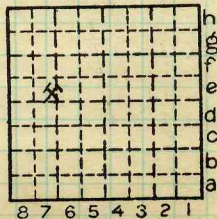
SUMMARIES

No.	to	No.	Tons
		1935	1 284

Railroad, Wagon, Idle, Abandoned 1936
IDENTIFICATION Strip

County No. 840 Coal No. 6

Quad. Herrin Part
County Williamson



Sec. 3
T. 9 S.
R. 1 E.
Index No.

COAL MINE—PRODUCTION



LOCATION AND ELEVATION

Location: side R. R.
side R. R.
side Highway No.

on top. map Location sheet

Elevation: Method, 1. Est. () ft.
2. Inst. (kind) ft.

By Data sheet

DEPTH

Authority To coal ft.
Authority Rail to rail ft.
Top of coal above rail. (Est. Rule) ft.
To coal ft.

ALTITUDE OF TOP OF COAL

By estimated data
By instrumental data ft.

Thickness

Max. in. Min. in. Aver. 108 in.

GEOLOGICAL DATA

Mine notes, date None

Coop No. Pyr. inv. Coal Ash inv.

CHEMICAL DATA

Table with 4 columns: Analyses Face, U. I., B. M., Others. Rows include Car, Org. Sulf, Ash fusion, Ash anal., and U. I.

Classification

Misc. tests: Coking. Cleaning Boiler

Published descriptions:—

Railroad, Wagon, Idle, Abandoned Strip

Drift?

IDENTIFICATION

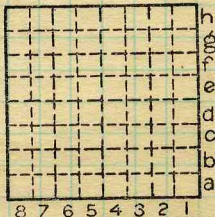
County No. 840

Coal No. 6



Part

Quad. Herrin
County Williamson



Sec. 3

T. 9 N. S.
R. 1 E. W.

Index No. 0503 e7

COAL MINE LOCATION AND DATA