

2088

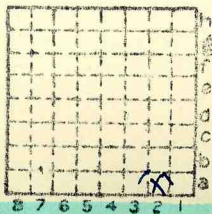


Form 180

[Blacked out area]

Mine Index 2925

209
L-3



Sec. 30
T. 10 N.
R. 9 W.
Index No.

The Challons C. Co. is located in sec. 30,
T. 10N, R. 9W (TM 192)

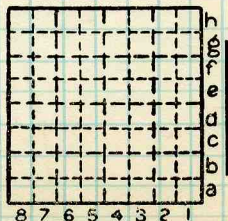
Orval Greenstreet = Challons C. Co. =
Stanley Palulis = Thos. Rand. The
mine is on the Thos. Rand farm and Rand
still owns the land.

-- from Joseph Firth, Mine Inspector

By EFT Date 6/7/37

Quad. _____ Part _____

County MACOUPIN



Sec. 30
N. 10
R. 9 W.
Index No.



Mine originally operated by: (1) *Thos. Rands*
Date *1898* L-3 *Chesterfield*

Original name or number:
Illinois Coal Report p.

LATER OPERATORS

Date	Operator	Name or No.
2	<i>Albert Rand</i>	
3	<i>Challons Coal Co.</i>	
4	<i>Orval Greenstreet</i>	
5	<i>Stanley Palulis</i>	
6	<i>A. Rand</i>	
7	<i>Hoosier Coal Co.</i>	

No Prod 1939.

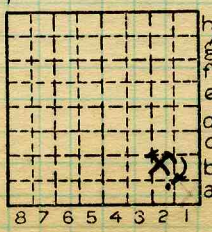
* Also owners # See ownership sheet

~~Roller~~ Wagon, ~~112~~ Abandoned *shaft*

LOCAL MINE

IDENTIFICATION

County No. *309* Coal No. *6*
Quad. *Greenfield (192)* Part *8*



Sec. *30*
T. *10* N. S.
R. *9* W.
Index No.

County *Macoupin*

Mine Index *2925* COAL MINE OPERATOR

1230. 25
L AZ



LOCATION AND ELEVATION

Location: side R. R.
side R. R.
side Highway No.
on top. map Location sheet

Elevation: Method, 1. Est. () ft.
2. Inst. (kind PT) 534.6 ft.
By EFT 9-59-24 Data sheet

DEPTH

Authority To coal ft.
Authority Rail to rail ft.
Top of coal above rail. (Est. Rule) ft.
EFT To coal 56 ft.

ALTITUDE OF TOP OF COAL

By estimated data
By instrumental data 478.6 ft.

Thickness

Max. in. Min. in. Aver. 84 in.

GEOLOGICAL DATA

Mine notes, date

Coop No. Pyr. inv. Coal Ash inv.

CHEMICAL DATA

Analyses Face U. I. B. M. Others
Car U. I. B. M. Others
Org. Sulf U. I. B. M. Others
Ash fusion U. I. B. M. Others
Ash anal. U. I. B. M. Others
U. I. B. M. Others

Classification

Misc. tests: Coking. Cleaning Boiler

Published descriptions:—

Railroad, Wagon, Idle, Abandoned

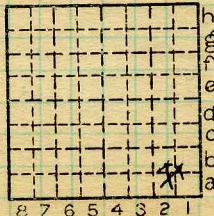
IDENTIFICATION

County No. 309

Coal No. 6

Quad. 192
County

Part



Sec. 30

T. 10 N.

R. 9 W.

Index No.

Macoupin

COAL MINE LOCATION AND DATA

1230.AZ

L