

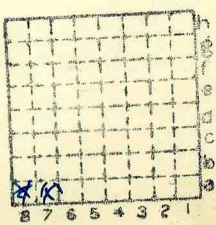


Form 180

F Schofield
O. Cummins.

L9

62



Sec. 24

T. 12 N. S.

R. 11 E. W.

Index No.





Mine originally operated by: (1) Orval Cummins

Date

1936 L-9

(1933)

Original name or number:

Illinois Coal Report 1936 p.

LATER OPERATORS

Date

Operator

Name or No.

2 1937 Everett Schofield

3

4

5

6

7

8

9

10

11

12

13

14

*Also
L106 - different mine
see 1940?*

Slope 12' to 32" of #2

* Also owners

#See ownership sheet

Railroad, Wagon, Idle, Abandoned Drift Mine

IDENTIFICATION L-9

County No. 62

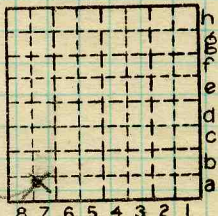
Coal No. 1

Quad. Roodhouse



Part

County Greene



Sec. 24

12 N.

T. 3.

R. 11 W.

Index No.

0224

COAL MINE OPERATOR

LOCAL MINE