

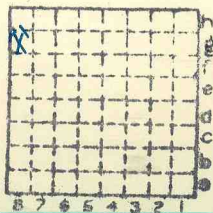


Form 180

Chas. A. WeITERS
Donkle CC

R. .F
HERRIN

1238
395



Sec. 14
T. 1 N.
S. S.
R. 9 E.
W. W.
Index No.

Mine Index 3585





Mine originally operated by: (1)

Date

Original name or number:

Illinois Coal Report

p.

LATER OPERATORS

| Date | Operator | Name or No. |
|--------|---------------------|-------------|
| 2 1934 | Charles A. Weisters | |
| 8 1934 | Dunkle Coal Co. | |
| 4 | | |
| 5 | | |
| 6 | | |
| 7 | | |
| 8 | | |
| 9 | | |
| 10 | | |
| 11 | | |
| 12 | | |
| 13 | | |
| 14 | | |

Ship according to Coal Report 1934.

* Also owners

See ownership sheet

Railroad, Wagon, Idle, Abandoned

LOCAL MINE

IDENTIFICATION

County No. 395 1238

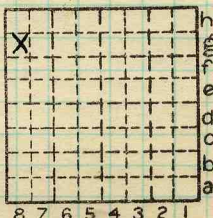
Coal No.

6

Quad. Waterloo

Part 1

County St Clair



Sec. 14

T. 1 S.

R. 9 E. W.

Index No.

1314 89

COAL MINE OPERATOR



(Sheets) COAL PRODUCTION (Sheet)

| Period | | | | | | Tons | |
|--------|-----|------|-----|-----|------|------|-------|
| Mo. | Day | Year | Mo. | Day | Year | | |
| 1 | 1 | 1934 | 12 | 31 | 1934 | 900 | Local |

SUMMARIES

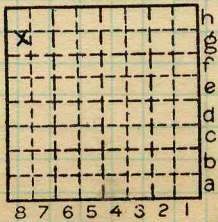
| No. | to | No. | | | | |
|-----|----|-----|--|--|--|--|
| | | | | | | |

Railroad, Wagon, Idle, Abandoned

IDENTIFICATION

County No. 395 Coal No. 6

Quad. Waterloo Part 1
 County St. Clair



Sec. 14
 T. 1 S. 1
 R. 9 W. 1

Index No. 131489

COAL MINE—PRODUCTION



LOCATION AND ELEVATION

Location: side R. R.
 side R. R.
 side Highway No.

on top. map Location sheet

Elevation: Method, 1. Est. () _____ ft.
 2. Inst. (kind _____) _____ ft.

| | |
|-------------------------------------|--------------------------|
| By _____ | Data sheet _____ |
| DEPTH | |
| Authority _____ | To coal _____ ft. |
| Authority _____ | Rail to rail _____ ft. |
| Top of coal above rail. (Est. Rule) | |
| | _____ ft. |
| | To coal <u>18-20</u> ft. |

ALTITUDE OF TOP OF COAL

By estimated data _____

By instrumental data _____

Thickness

| | | | |
|------------|----------------|---------------------|-----------|
| Max. _____ | in. Min. _____ | in. Aver. <u>72</u> | in. _____ |
|------------|----------------|---------------------|-----------|

GEOLOGICAL DATA

Mine notes, date _____

Coop No. _____ Pyr. inv. _____ Coal Ash inv. _____

CHEMICAL DATA

| | | | |
|---------------|-------|-------|--------|
| Analyses Face | U. I. | B. M. | Others |
| Car | U. I. | B. M. | Others |
| Org. Sulf | U. I. | B. M. | Others |
| Ash fusion | U. I. | B. M. | Others |
| Ash anal. | U. I. | B. M. | Others |
| | U. I. | B. M. | Others |

Classification

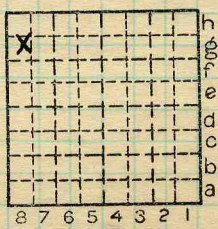
Misc. tests: Coking. _____ Cleaning _____ Boiler _____

Published descriptions:—

Railroad, Wagon, Idle, Abandoned

IDENTIFICATION

County No. 395 Coal No. 6
1238 Part 1
 Quad. Waterloo
 County St Clair



Sec. 14
 T. 1 S. _____
 R. 9 W. _____
 Index No. 13148g

COAL MINE LOCATION AND DATA