

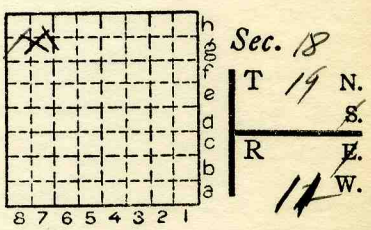
Location and Elevation Data

Location: Exact Approximate
(Approximate only if no trace of record of original exists)
Location by DMM Film 1938
Date Notebook No. Page
Looseleaf ref.
Map files No.

Description of Location

Position in sec., 1/4 sec., 40 acres

feet from North line
feet from East line
feet from South line
feet from West line



Other description:

W-102
OPENED 1934

Sec: 12-14N, 12W, A2

Farm No.
Company (W.M. Cook) (W.M. Wyckoff) I & W, CAC Co.
No.
County No.

Elevation ft.
By

Method: Level, transit, alidade, hand level

Elevation of
Height of point above ground
Date Notebook P.
Looseleaf ref.

Map files No.

Description of item: (drill hole, mine, etc.) Slope mine

20' to 5' x 6' 5" DMM Film 1938

County Vermilion Quadrangle 149 Index No. 171867





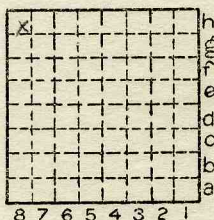
Location and Elevation Data

Location: Exact Approximate
(Approximate only if no trace of record of original exists)
Location by: Dept Mines & Minerals
Date..... Notebook No..... Page.....
Looseleaf ref.....
Map files No.....

Description of Location

Position in sec., 1/4 sec., 40 acres

.....feet from North line
.....feet from East line
.....feet from South line
.....feet from West line



Sec. 18
T 19 N.
S.
R 11 W.

Other description:.....

Farm.....
No.....
Company I & W Coal Co.
No.....
County No.....

Elevation.....ft.

By.....

Method: Level, transit, alidade, hand level

Elevation of.....

Height of point above ground.....

Date..... Notebook..... P.....

Looseleaf ref.....

Map files No.....

Description of item: (drill hole, mine, etc.) Slope Mine

20' to 6' of #7 wal LOCAL MINE

County Quadrangle Danville Index No. 1718



Mine originally operated by: (1) A. D. & L. Coal Co.

Date 1936 L-102

Original name or number: Illinois Coal Report 1936 p.

NO

LATER OPERATORS

Date	Operator	Name or No.
2 1937	I. & W. Coal Co.	

- 3
- 4
- 5
- 6
- 7
- 8
- 9
- 10
- 11
- 12
- 13
- 14

No. 1939 Prod.

* Also owners #See ownership sheet

Railroad, Wagon, Idle, Abandoned Slope Mine

IDENTIFICATION

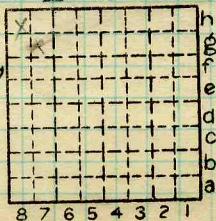
County No.

Coal No. 7

Quad. Danville

Part

County Vermilion



Sec. 18
19

T. N.
R. 11 W.

Index No.

1718

COAL MINE OPERATOR

LOCAL MINE



(Sheets) COAL PRODUCTION (Sheet)

Period						Tons
Mo.	Day	Year	Mo.	Day	Year	
					1936	170
					1937	600
					1938	300
					38	30

No
 not related to
 A.O. & L

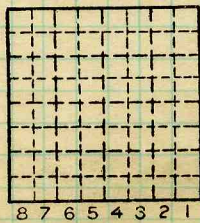
SUMMARIES

No.	to	No.

Railroad, Wagon, Idle, Abandoned
 IDENTIFICATION

County No. Coal No. 7

Quad. Danville Part
 County Vermilion



Sec. 18
 19 N.
 T. 1
 R. 11 W.
 Index No.
 1718

COAL MINE—PRODUCTION