

Illinois State Geological Survey

July 27, 1932. See map no. 4107 d5.1-195 Sh.81

(0216.1 $\frac{1}{2}$ 0 - 0221.1 $\frac{1}{2}$ 9).7a-.1h

Exposure in small ravine flowing north, just north of small stripping in coal

Slate, black, fissile, hard, well jointed 1'6" approx.
Coal 1'4" seen, reported to run up to 2' or more
Sandstone, light gray, dense, massive ledge 4"
Shale, sandy, light gray, with some lenses of sandstone 2' seen.

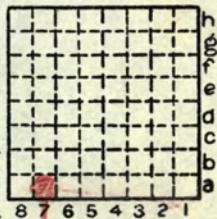
(Coal is thought to be the Flannigan horizon, and if so, marks its farthest west known outcrop. There is some chance that it may be the Macoupin coal, though this does not possess a typical black slate in other exposures in this district)

Beds dip down stream here and farther downstream there is seen a medium to thin bedded sandstone, which may be above slate and coal, but this could not be determined.

By H.R. Wanless Date 1932

Quadrangle Ina

County Franklin Sec. 16 T. 5S R. 3E



Illinois State Geological Survey

July 27, 1932.

See map no. 4107 d5.1-195 Sh.81

(0221.1 $\frac{1}{2}$ 9 - 0216.1 $\frac{1}{2}$ 0) .7h-.7a

Exposure in small ravine flowing north, just north of small stripping in coal

Slate, black, fissile, hard, well jointed 1'6" approx

Coal 1'4" seen, reported to run up to 2' or more

Sandstone, light gray, dense, massive ledge 4"

Shale, sandy, light gray, with some lenses of sandstone 2' seen.

(Coal is thought to be the Flannigan horizon, and if so, marks its farthest west known outcrop. There is some chance that it may be the Macoupin coal, though this does not possess a typical black slate in other exposures in this district)

Beds dip down stream here and farther downstream there is seen a medium to thin bedded sandstone, which may be above slate and coal, but this could not be determined.

By H.R. Wanless Date 1932

Quadrangle Ina

County Franklin Sec. 21 T. 5S R. 3E

