



Form 180 Blue

??

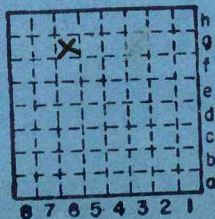
Mine map: 4103. W52 i 5.1-62
Map says "permanently abandoned in 1937"; but Coal reports give L-83 production for 1938 & 1939.

McDannel + Matthews

ISGS Index
No. 4085.

L-83

987



Sec. 32 96

T. 9 N. S.

R. 4 E. W.

Index No.
0830





Mine originally operated by: (1)

McDannel & Mathews Coal Co

Date

~~1936~~

1937

Original name or number:

Illinois Coal Report 1936

p.

LATER OPERATORS

Date	Operator	Name or No.
2		
3		
4		
5		
6		
7		
8		
9		
10		
11		
12		
13	455' W. line } NE NW 790' S. line }	
14		

*Also owners

#See ownership sheet

Railroad, Wagon, Strip, Idle, Abandoned

IDENTIFICATION

County No. 787

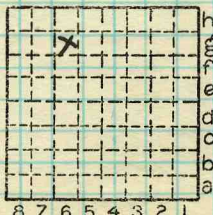
Coal No.

Coal Report No. L-83



Quad. Marion

County Williamson



Sec. 32

T. 9 N. S.

R. 4 E. W.

Index No. 0832

COAL MINE OPERATOR

Location and Elevation Data

Location: Exact Approximate
(Approximate only if no trace of record of original exists)

Location by Dept Mines & Minerals

Date Notebook No. Page

Looseleaf ref.

Map files No. 4103.W52 ?

25.1-62 Description of Location

Position in sec., 1/4 sec., 40 acres

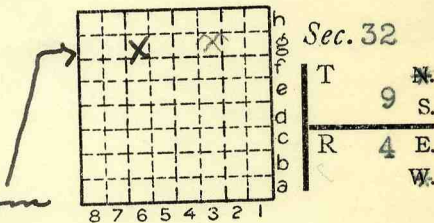
..... feet from North line

..... feet from East line

790 feet from South line

455 feet from West line

NE NW. M.A.P. 1967 from mine map



Other description: N 1/2 NEMW

L-83

Farm

No.

Company McDannel & Mathews Coal Co

No.

County No. 987

Elevation ft.

By

Method: Level, transit, alidade, hand level

Elevation of

Height of point above ground

Date Notebook P.

Looseleaf ref.

Map files No.

Description of item: (drill hole, mine, etc.)

County Williamson Quadrangle Marion Index No. 0832