



Form 180 Blue

~~not found in yellow sheets~~
~~not found in location sheets.~~

Wm. H. Bennett

mine index 6670

h	•	•	•	•	•	•	•	•	•	•	•	•	•	•	•	•
g	•	•	•	•	•	•	•	•	•	•	•	•	•	•	•	•
f	•	•	•	•	•	•	•	•	•	•	•	•	•	•	•	•
e	•	•	•	•	•	•	•	•	•	•	•	•	•	•	•	•
d	•	•	•	•	•	•	•	•	•	•	•	•	•	•	•	•
c	•	•	•	•	•	•	•	•	•	•	•	•	•	•	•	•
b	•	•	•	•	•	•	•	•	•	•	•	•	•	•	•	•
a	•	•	•	•	•	•	•	•	•	•	•	•	•	•	•	•
	8	7	6	5	4	3	2	1								

Sec. 16 E8

T.	19	N.
R.	11	N.

Index No.

✓



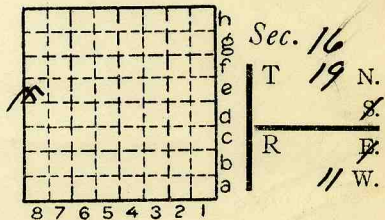
Location and Elevation Data

Location: Exact Approximate
 (Approximate only if no trace of record of original exists)
 Location by W. P. A. B&W Strip mine map Ext. 1-2-40
 Date..... Notebook No..... Page.....
 Looseleaf ref.....
 Map files No.....

Description of Location

Position in sec., 1/4 sec., 40 acres

.....feet from North line
5100 feet from East line
2950 feet from South line
feet from West line



Other description:.....

Farm.....
 No.....
 Company W. H. BENNETT

#7
on mine map in Coal Div. files
of B. & W. C. G. strip pit Ext. 1-2-40

No.....
 County No. ~~10722~~

EXT. 12-11-37

Elevation..... ft.

By.....

Method: Level, transit, alidade, hand level

Elevation of.....

Height of point above ground.....

Date..... Notebook..... P.....

Looseleaf ref.....

Map files No.....

Description of item: (drill hole, mine, etc.) Slope mine

ABD

County Vermilion Quadrangle 49

Index No. 1716 08

Mine originally operated by: (1)

Date

1918

Wm. H. Bennett

Original name or number:

Illinois Coal Report p.

LATER OPERATORS

Date	Operator	Name or No.
2		
3		
4		
5		
6		
7		
8		
9		
10		
11		
12		
13		
14		

*Also owners

#See ownership sheet

Railroad, Wagon, Strip, Idle, Abandoned

IDENTIFICATION

County No. _____

Coal Report No. _____

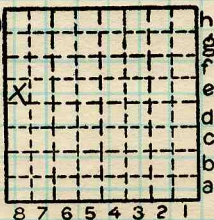
Quad. *149*

County *Vermilion*

1923(1)

Coal No.

7



Sec. *16*

T. *19* N. *8*

R. *12* E. *W.*

Index No.

COAL MINE OPERATOR

1716 E8



(Sheets) COAL PRODUCTION (Sheet)

Period						Tons						
Mo.	Day	Year	Mo.	Day	Year							
		1918								300		
		1919								2400		
		1920										
		1921								250		
		1922										

SUMMARIES

No.	to	No.																	

Railroad, Wagon, Strip, Idle, Abandoned

Slope Mine

Sec. 16

IDENTIFICATION

County No. _____

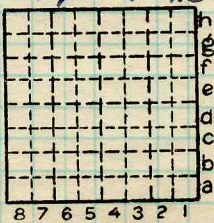
Coal No. _____

Coal Report No. _____

7

Quad. 149

County Vermilion



T. 19 N.
R. 11 E.
Index No.

1716 E 8

COAL MINE—PRODUCTION

ILLINOIS GEOLOGICAL SURVEY, URBANA

