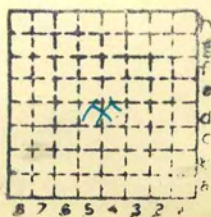




Form 180

J. Trotter



Sec. 31

T. 17

R. 7

Index No.



Mine originally operated by: (1)

Springfield & Pleasant Plains C.C.
Pleasant Plains

Date 1888

Original name or number:

Illinois Coal Report

p.

LATER OPERATORS

Date

Operator

Name or No.

2 1901 J. Trotter

3

4

5

6

7

8

9

10

11

12

13

14

nos - 125' (490 elev)

* Also owners

See ownership sheet

Railroad, Wagon, Idle, Abandoned

IDENTIFICATION

County No.

Coal No.

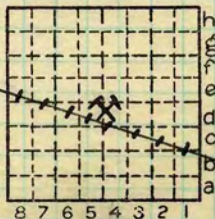


Part

Quad.

County

Saugmon



Sec. 31

T. 17 N.

R. 7 E.

Index No.

COAL MINE OPERATOR

05W31