

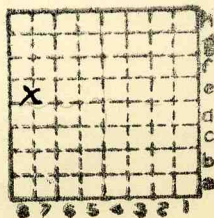
2407



Form 180

C. W & U # 3

Index
-99



Sec: 24

T. 31 ~~2~~

R. 3 ~~4~~

Index No.



Mine originally operated by: (1)

BARGREEN BROS?
STREATOR

Date 1899.

Original name or number: C.W.V. #3

Illinois Coal Report p.

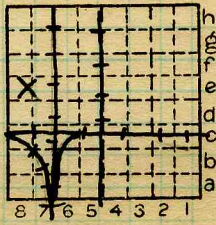
LATER OPERATORS

Date	Operator	Name or No.
2	C.W. & V.	3.
3		
4	See MoA map.	
5		
6		
7		
8		
9		
10		
11		
12		
13		
14		

* Also owners # See ownership sheet

Railroad, Wagon, Idle, Abandoned 1917

IDENTIFICATION 36" #2
 60" #6x
 County No. Coal No.
 Quad. 80. Part 6



Sec. 24
 T. 31 N.
 R. 3 E.
 Index No.

County LASALLE

COAL MINE OPERATOR

2824



Town, La Salle

Local Authority,

Level: Auth., Bull 10.

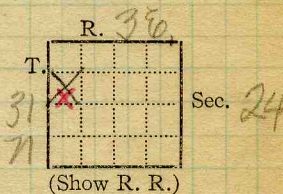
Method,

R. R.,

Location: authority, Bull 10

Surface alt., 637. ? ft.
 Depth to coal, 215 ft.
 Alt. top coal, 422 ft.
 Thickness: Av. 36 in.
 Max. in., Min. in.

Mine notes differ



Operator

Mine Name or No.

19 15 Chi., Wil. & Franklin Coal Co. No. 3

Successor to

Chu. Mil & Verm. Coal Co. No. 3

Date

1911

Succeeded by

Date

Succeeded by

Date

PRODUCTION.

							U. S. No.
19						abd + scrapped 126	

Geol. Notes? *Yes*

Coop. No. 99

Coal secs.? 5

Analyses No.

5414, 16, 17.

Examined by

Ref.

Coal bed name: Local

Survey No.

County La Salle

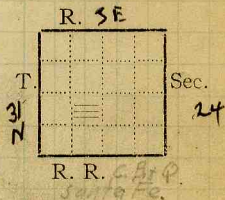
Index No. 2824.15

K.—ACTIVE SHIPPING OR LOCAL COAL MINE.



COAL MINING INVESTIGATIONS
COOPERATIVE AGREEMENT

Mine Name or No., 3
mile from *Streator*
Operator, 1912 *Chicago, Wilmington + Vermilion*
Coal Co.
Operator, 191



Entrance, *shaft* Elev., ft. { above,
Depth to bottom coal, *79* ft. Alt. below,

SURFACE DATA.

- A. Topography *Flat* See
- B. Surficial materials, (1) Character *Glacial drift.*
Sand, gravel, and boulders.
(2) Thickness, *69'* (3) Effect on mining and shaft-sinking, of former
drainage lines, underground water strata, etc. *In shaft only 5'*
of soapstone was present, drift above.
20' from surface struck bed of quick mud, or silt
about 4' to 5' thick, carries water.
Drift cuts down thru shale and occasionally cuts out the
coal. As a rule the drift cuts to the coal rather
than thru it. Mine is very wet, water due to breaks
in roof, letting it in from the drift horizon. See
- C. Outcrops, (1) Character, See
(2) Structure, See
(3) Fossil horizons See
Collection No.,
(4) Evidences of subsidence, *Considerable* See #3
- D. Note collection of mine maps, drill records and shaft logs.

See drill record sheet.

E. Notes on surrounding area,

See

Coal bed name: Local, *1st Vein*
Collector, *K.D. White*
Mine, #3

Survey #7
State No. **2824**
Co-op. No. *99*

Co. *LaSalle*



UNDERGROUND DATA

F. Thickness of rock above bed worked, 0' - 30' or 20'

(1) Important variations,

Drift cuts out coal completely. See

G. Note presence of strata having important effect on mining.

Glacial Drift See

(1) Position, *surface to unconformable contact with coal meas.*

(2) Character, *Drift.*

(3) Persistence, *Over district.*

(4) Other workable coal beds, *2 to approx to #2, (thickness 2 1/2' to 3 1/2')*

See

H. Cap rock, *No Cap.*

(1) Thickness,

(2) Height above coal,

See

I. Immediate roof *Gray Shale slightly sandy*

(1) Thickness, *10' to 30'* (2) Contact with coal, *Yes.*

(3) Horizontal variation,

Amount of sand varies. See #3

J. Draw slate. (1) Thickness, (2) Contacts

No Regular draw

(3) Persistence

K. Coal bed: Max. 6'-0" Min. 5'-0" Av. 5'-6" inches

(1) Benches, *2*

(a) Position,

(b) Persistence,

Over mine See #3

(2) Bedded impurities, kind, position in benches, persistence, ease of separation.

sulphur lenses irregular in distribution

See

(3) Irregularities in continuity of bed (due to deposition, erosion, or movement).

Rolls, slips, clay veins See #1, #3

(a) Effect on mining,

Makes a bad roof. See

SECTION				
Ft.	In.	Name	Index	Sym.

Collector, *K.D.W.*

Coal, *#46*

State No. **2824**

Mine, *#3, Streater*

Co. *La Salle*

Co-op. No. *99*



UNDERGROUND DATA (cont'd.)

K. (5) Physical character of coal in benches,

(a) Relative hardness, *Soft. to medium hard.*(b) Lustre, *Dull.*(c) Fracture, *Hackly.*(d) Texture, *Laminated*

See #2, #3

(6) Impurities in coal, other than bedded,

(a) Kind, *Calcite.*

(b) Position and persistence,

(c) Rejected,

Ease of separation,

See

L. Floor: (1) Material *Black slate*(2) Thickness *8" to 30"*(3) Variation *Constant*

(4) Note character, condition, tendency to heave, relation to undercutting, commercial value.

Below black slate, a fire clay 2' thick. Black slate with plant impressions.

See

(5) Clay sample No.

Location,

M. Stratigraphy

(1) Fossiliferous horizons underground,

Collection No.

Location,

N. Notes on effect of deep drilling in coal mine areas.

See

Collector, *KDW*Coal # *7*

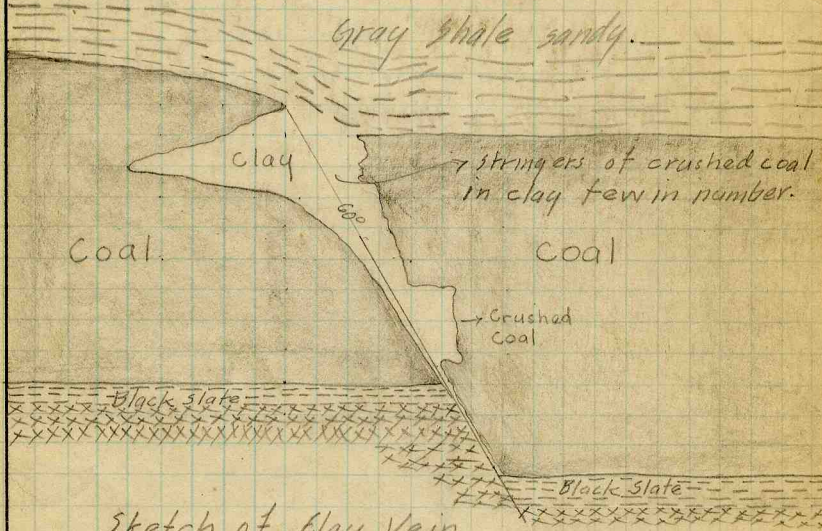
State No.

*2824*Mine, # *3 Sreator*Co. *La Salle*Co-op. No. *99*

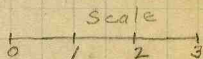


INDEX

K3

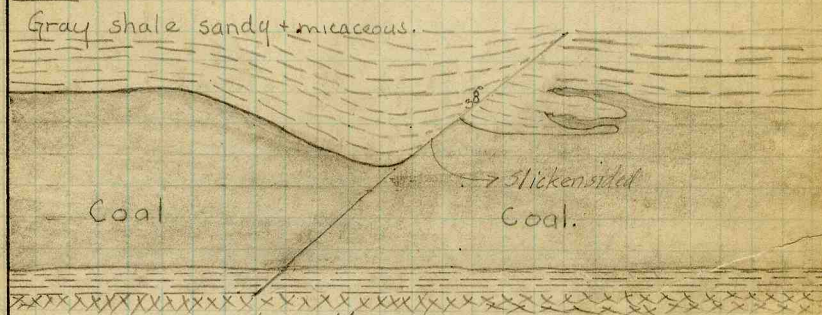


Sketch of Clay Vein off 4th W Entry.



Contact between coal clay irregular, ~~but~~ Coal is clean and good up to clay vein.

K3



Roll 3rd R. off 71 East

Collector KDW
Mine #3 Streator

Coal 7
Co. LaSalle

State No. 2824
Co-op No. 99



INDEX

K5

1. Section Room 72-3R-71st East.

1. Coal laminated; glance coal in very thin streaks. Mother coal soft sometimes in lenses. Calcite in fair amount. Coal is dull, has the appearance of pillar coal. Top Coal 2'-5"
2. Black smith coal, clean and bright 0'-7"
3. Parting carbonaceous clay
4. Dull coal 0'-3"
5. Parting Mother coal
6. Bottom Coal 2'-5"

Bottom coal is duller than top, contains dirt partings, is soft. Bottom 6" of bed boney. About 2' from bottom a sulphur band sometimes occurs.

The entire bed is dull, soft, hackly fracture, and irregularly laminated. It is dirty and soots the fingers.

Total Thickness 5'-8"

K5

2. Section, Room 69-4th R, Main South

1. Top coal, fairly bright, soft, fracture hackly, calcite along faces. Mother coal, soft and in lenses. Sulphur is present with the mother coal and clay, only a small amount in balls and lenses.

A band of sulphurous mother coal occurs at times about 8" from the roof. 2'-8 1/2"

2. Parting mother coal
3. Splint coal 0'-3 1/2"
4. Mother coal and sulphur 0'-1"
5. Bottom coal 2'-5"

Harder than top, very slightly boney, bright.

6. The sulphur in the bed occurs in balls generally but small in number, they are difficult to separate as they freeze to the coal.

Coal is superior to (sec #1.)

Total Thickness 5'-6"

K5

Face Room 103-6R.

Cleat 568°W

Collector K.D.W.
Mine #3 Streator

Coal 7
Co. La Salle

State No. 2824
Co-op No. 99



INDEX

- G4 Subsidence are about 10' in diameter, 5' to 15' deep, some however are 25' in diameter.
Quick sand running out causes the depth of the depressions.
- Face Room 103 - 6R.
- K5 Top Coal 3'-1"
Bottom " 2'-8"
Total 5'-9"
Coal is similar to other sections.
- K5 The contact between coal and shale, fairly sharp, generally about 1" of carbonaceous shale between coal and shale.
- K The coal is thicker in the swags than on the ridges, as much as 9" difference.
- K5 Coal contains a large number of clay veins, they are always accompanied by a displacement of the bottom of a foot or 18". The coal always shows a drag from one side, and the roof is dragged into the slip. Amount of clay always greatest toward roof.
- K5 Rooms are reported turned on face cleat, and entries on the butt.
- I Roof is a dark gray shale, with a speckled appearance, has small flakes of mica scattered thru and some sand. The shale is irregularly bedded. The roof is also better in the swags than on the ridges, probably due to glacial erosion.

Collector KDW
Mine #3 Streator

Coal 7
Co. LaSalle

State No. 2824
Co-op No. 99



COAL MINE NOTES.

COUNTY *LaSalle*

TOWN *Streator*

MAP No. *2824*

T. *31N*

R. *3E*

S. *24. SW. of N.W*

OPERATOR *Chi. Wil & Ver. Coal Co.*

OFFICE *Chicago.*

MINE *#3*

TIPPLE

ENGINES

BOILERS

DRUM

SHAFT

CAGE

HAULAGE

CARS

VENTILATION

DRAINAGE

SPRINKLING

WORKING SYSTEM

MINING METHODS

SIZE OF ENTRIES—MAIN

CROSS

ROOM

NECK

SIZE OF PILLARS—MAIN

CROSS

ROOM

SHAFT

CHAIN

BARRIER

AMOUNT OF TIMBERING

SIZE

PROPORTION OF COAL UTILIZED

AMOUNT AND CHARACTER OF WASTE

ACREAGE OF COAL MINED

ACREAGE OF COAL REMAINING

PROPORTION OF MINE RUN AND SCREENED COAL

METHOD OF SIZING

RESCREENED

SIZES

PER CENT

PROPORTION AND SIZE OF WASHED COAL

DAILY OUTPUT

UTILIZATION

MARKETS

FREIGHT RATES

SELLING PRICES AT MINE

2824

COAL LAND OWNED

LEASED

HELD IN FEE

COST OF LAND OWNED

LEASED

HELD IN FEE

ADDITIONAL NOTES



COAL MINE NOTES.
CONTINUED.

OPERATOR *Chi, Wil. 8 Ver Coal Co.* MINE #3
 ENTRANCE *Shaft.* NAME OF COAL BED *2. 7*
 ELEVATION *620 620* THICKNESS OF COAL
 DEPTH TO FLOOR *218 70* MAX. MIN. AV. *36", 60"*
 ALTITUDE OF COAL *402 550*
 LOCATION OF SECTION

No.	SECTION.	In.
1		
2		
3		
4		
5		
6		
7		
8		
9		
10		
11		
12		
Tape		Total

SAMPLE No.
 CAN No.
 CONDITION
 GROSS WEIGHT
 TIME EXPOSED
 NOT SHIPPED
 NOT INCLUDED

SECTION	Feet

PHYSICAL PROPERTIES BY NUMBERS

ROOF
 FLOOR
 DIP
 FAULTS, ETC.
 GAS

COLLECTOR

REFERENCE

DATE

2824



COAL, MINING INVESTIGATION

COOPERATIVE AGREEMENT

Operator, *Chgo. Willmington & K.C.C.* Date, *8-19* 191*2*
 Mine, # *3* Located *7* miles* from *Streator*
 Location in mine, # *2 Room face 4th N. cut off (4000' from*
 Total (vertical) depth from surface at point of sampling, *70* ft. *Sheet*

In describing the beds and character of the members, note any member that is rejected by the miner. Note all clay and sulphur partings, whatever their thickness. Exclude from sample all clay and sulphur partings $\frac{3}{8}$ inch thick or over (and even those of less thickness if they are rejected at mine or tipple).

SECTION OF BED AT POINT SAMPLED

No.	DESCRIPTION	FEET	INCHES
1	<i>Coal, Bright</i>	<i>3</i>	<i>0</i>
2	<i>Coal, Dull</i>	<i>1</i>	<i>9</i>
3	<i>Coal, Bright</i>		<i>11</i>
4			
5			
6			
7			
8			
9			
10			
11			
12			
13			
14	<i>Output - 500T</i>		
15	<i>Roof - Soapstone</i>		
16	<i>Floor - Slate</i>		
17			
TOTAL,		5	8

Is coal wet or dry? *Dry*
 Time exposed, *35* hours, *35* minutes.
 Weight, *46* gross, net.
 What are the impurities, and how do they occur? *Small Mother Coal*
✓ Sulphur streaks
 What are shipped? *All*
 What are excluded from the sample? *None*

Coal bed, *?*

*Direction (N., NE., etc.).

†Nearest railway station.

Town, *Streator* Mine, # *3* Co. *C.W. & V. Coal Co.*
 Sample No. *99A* Can No. *117* No. *99 2824*

I.—COAL SAMPLE SHEET. Sampler, *M.D. Stafford*

#5414



COAL MINING INVESTIGATION

COOPERATIVE AGREEMENT

Operator, *Chi. Wilmington* Date, *8-19-1912*
 Mine, # *3* Located *1/4* miles N. from *Streator*
 Location in mine, *Face #2 Roman 3rd Rd off MHS 4000'*
 Total (vertical) depth from surface at point of sampling, *70'* ft.

In describing the beds and character of the members, note any member that is rejected by the miner. Note all clay and sulphur partings, whatever their thickness. Exclude from sample all clay and sulphur partings $\frac{3}{8}$ inch thick or over (and even those of less thickness if they are rejected at mine or tippie).

SECTION OF BED AT POINT SAMPLED

No.	DESCRIPTION	FEET	INCHES
1	Coal Bright		6 ¹¹
X 2	Sulphur band		1 ¹¹
3	Coal Bright	2	
4	Sulphur band		1 ⁸
5	Coal Bright		8 ⁹
6	Coal Medi. Bright	1	10
7			
8			
9			
10			
11			
12			
13			
14	<i>Output 6007</i>		
15	<i>Roof - Gypsumstone</i>		
16	<i>Flat - slate</i>		
17			
TOTAL,		5	1 ¹¹ / ₈

Is coal wet or dry? *dry*
 Time exposed, *7* hours, *40* minutes.
 Weight, *34* gross, net.
 What are the impurities, and how do they occur? *Sulphur*

What are shipped? *1-3-4-5-6*
 What are excluded from the sample? *2*

*Direction (N., NE., etc.). †Nearest railway station.

Town, *Streator* Mine, # *3* Co. *Chi. Wilmington*
 Sample No. *99B* Can No. *81050* No. *2824*

I.—COAL SAMPLE SHEET. Sampler. *Men Stafford*
#5416



COAL MINING INVESTIGATION

COOPERATIVE AGREEMENT

Operator, *Chicago, Wilmington & W. V. C. Co.* Date, *5-19 1912*
 Mine, *43* Located *1/4* miles ~~from~~ *from* ~~the~~ *operator*
 Location in mine, *19 down face, 4 ft. N. later, 4500 from shaft*
 Total (vertical) depth from surface at point of sampling, *70* ft.

In describing the beds and character of the members, note any member that is rejected by the miner. Note all clay and sulphur partings, whatever their thickness. Exclude from sample all clay and sulphur partings $\frac{3}{8}$ inch thick or over (and even those of less thickness if they are rejected at mine or tippel).

SECTION OF BED AT POINT SAMPLED

No.	DESCRIPTION	FEET	INCHES
1	Coal, Bright	2	3
2	Sulphur streak		$\frac{1}{8}$
3	Coal, Bright	1	$\frac{1}{8}$
4	Sulphur streak		$\frac{1}{8}$
5	Coal, Bright	1	$\frac{6}{16}$
6	Coal, <i>Dot</i>		$\frac{6}{16}$
7			
8			
9			
10			
11			
12			
13			
14			
15	Output seat		
16	Roof - Soap stone		
17	Floor - Slate		
TOTAL,		5	3 $\frac{1}{4}$

267 6 3 1/4

Is coal wet or dry? *Dry*
 Time exposed, *40* hours, *40* minutes.
 Weight, *38* gross, *net.*
 What are the impurities, and how do they occur? *Small Sulphur*
 What are shipped? *All*
 What are excluded from the sample? *None*

Coal bed, ?

*Direction (N., NE., etc.).

†Nearest railway station

Town, *Greentown* Mine, *43* Co. *C. W. & V. Coal Co.*
 Sample No. *49C* Can No. *202* No. *2824*

I.—COAL SAMPLE SHEET. Sampler, *men - Stafford*
#5417



Duplicate COAL MINING INVESTIGATION

COOPERATIVE AGREEMENT

Operator, *Chgo. Wilmington & V. Co.* Date, *8-19* 191*2*
 Mine, *3* Located $\frac{1}{4}$ miles* *N* from † *Streator*
 Location in mine, *#2 Room face 4th N. cut off 4000' from shaft*
 Total (vertical) depth from surface at point of sampling, *70* ft.

In describing the beds and character of the members, note any member that is rejected by the miner. Note all clay and sulphur partings, whatever their thickness. Exclude from sample all clay and sulphur partings $\frac{3}{8}$ inch thick or over (and even those of less thickness if they are rejected at mine or tippie).

SECTION OF BED AT POINT SAMPLED

No.	DESCRIPTION	FEET	INCHES
1	<i>Coal, Bright</i>	<i>3</i>	<i>0</i>
2	<i>Coal, dull</i>	<i>1</i>	<i>9</i>
3	<i>Coal, Bright</i>		<i>11</i>
4			
5			
6			
7			
8			
9			
10			
11			
12			
13			
14			
15	<i>Output - 500T</i>		
16	<i>Roof - sandstone</i>		
17	<i>Floor - slate</i>		
TOTAL,		<i>5</i>	<i>8</i>

Is coal wet or dry? *Dry*
 Time exposed, *-* hours, *35* minutes.
 Weight, *46* gross, net.
 What are the impurities, and how do they occur? *Small water*
Coal streaks & Sulphur
 What are shipped? *all*
 What are excluded from the sample? *none* ?
 Coal bed, ?

*Direction (N., NE., etc.).

†Nearest railway station.

Town, *Streator* Mine, *# 3* Co. *C. W. & V. Coals*
 Sample No. *99A* Can No. *XYZ* No. *99*



COAL MINING INVESTIGATION

COOPERATIVE AGREEMENT

Operator, *Chgo. Wilmington + Vermillion Coal Co*
 Mine, *#3* Located $\frac{1}{4}$ miles* *N* from *†* *Streator*
 Location in mine, *Face #2 Room 3rd R. off main S.*
 Total (vertical) depth from surface at point of sampling, *70 ft. 4000' from shaft*

In describing the beds and character of the members, note any member that is rejected by the miner. Note all clay and sulphur partings, whatever their thickness. Exclude from sample all clay and sulphur partings $\frac{3}{8}$ inch thick or over (and even those of less thickness if they are rejected at mine or tippie).

SECTION OF BED AT POINT SAMPLED

No.	DESCRIPTION	FEET	INCHES
1	Coal Bright		6
x 2	Sulphur Band		1
3	Coal Bright	2	$\frac{1}{8}$
4	Sulphur Band		$\frac{1}{8}$
5	Coal Bright		8
6	Coal, <i>Med. Bright</i>	1	10
7			
8			
9			
10			
11			
12			
13			
14			
15	<i>Output - 500 T</i>		
16	<i>Roof - Soap stone</i>		
17	<i>Floor - Slate</i>		
TOTAL,			5 1 $\frac{1}{8}$

Is coal wet or dry? *Dry*
 Time exposed, - hours, *40* minutes.
 Weight, *34* gross, net.
 What are the impurities, and how do they occur? *Sulphur*
 What are shipped? *1-3-4-5-6*
 What are excluded from the sample? *2*

Coal bed, *?*

*Direction (N., NE., etc.). †Nearest railway station.

Town, *Streator* Mine, *#3* Co. *C. W. & V. C. Co*
 Sample No. *99B* Can No. *S.D. 50* No. *99 2824*
 I.—COAL SAMPLE SHEET. Sampler. *mei. & Stappford.*



COAL MINING INVESTIGATION

COOPERATIVE AGREEMENT

Operator, *C. G. Wilmington & Vermillion Coals*
 Mine, *#3* Located *1/4* miles* *N* from † *Theator* Date, *8-19* 191*1*
 Location in mine, *#9 Room face 4th N Entry 4500' from*
 Total (vertical) depth from surface at point of sampling, *70* ft. *shaft*

In describing the beds and character of the members, note any member that is rejected by the miner. Note all clay and sulphur partings, whatever their thickness. Exclude from sample all clay and sulphur partings $\frac{3}{8}$ inch thick or over (and even those of less thickness if they are rejected at mine or tippie).

SECTION OF BED AT POINT SAMPLED

No.	DESCRIPTION	FEET	INCHES
1	Coal, Bright	2	3 1/8
2	Sulphur streak		
3	Coal, Bright	1	1/8
4	Sulphur streak		
5	Coal, Bright	1	6
6	Coal, Dull		
7			
8			
9			
10			
11			
12			
13			
14			
15	Output 500 T		
16	Roof - sandstone		
17	floor - slate		
TOTAL,		5	3 1/4

Is coal wet or dry? *Dry*
 Time exposed, *—* hours, *40* minutes.
 Weight, *38* gross, *net.*
 What are the impurities, and how do they occur? *Small sulphur streaks*
 What are shipped? *all*
 What are excluded from the sample? *none*

Coal bed, *?*

*Direction (N., NE., etc.).

†Nearest railway station.

Town, *Theator* Mine, *#3* Co. *P.W. & V.C. Co*

Sample No. *990* Can No. *202* No. *99*

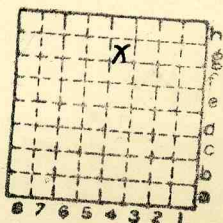
I.—COAL SAMPLE SHEET. Sampler. *Med. & Stafford 2824*



Form 180

See 34-31N-3E.

CW & V #3 - Investment
J.O., 1956



Sec. 25
 T. 31 N.
 R. 3 E.
 Index No.

✓



Mine originally operated by: (1)

C.W.V. #3
STREATOR

Date 1908

Original name or number:

Illinois Coal Report p.

LATER OPERATORS

Date Operator Name or No.

2 1917 Ab'd'd.

3

4 The area underneath this shaft was mined out
5 by C.W.V. #1. This may be a shaft of this
6 mine used ~~as~~ for hoisting at one time,
7 but probably not a separate mine.

P.J.D. 69

7

8

9

10

11

12

13

14

* Also owners # See ownership sheet

Railroad, Wagon, Idle, Abandoned

IDENTIFICATION

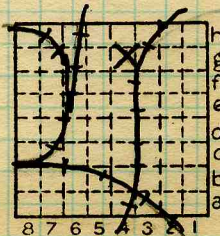
County No.

Coal No.

Quad. 80 80

Part 6

County LASALLE



Sec. 25

T. 31 N. S.

R. 3 E. W.

Index No.

2825

COAL MINE OPERATOR