



Form 180

The notes on chem. analysis may belong to  
man #1 in 8 N-3W-35. Inst. 9/9/57

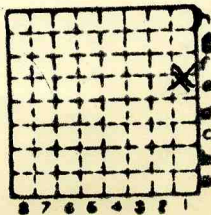
Record of Shaft on file in Tech. Records.

Claver Leaf CC, #4  
Cosgrove-Meehan CC.

= 4

C. 161

BM 43



Sec. 3

T. 7 5 N.

R. 3 1 W.

Index No.

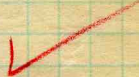


Mine originally operated by: (1) **CLOVER LEAF COAL CO** 2  
 Date **1907 COAL REPORT** **COFFEEN**  
**1905 - shaft sunk**

Original name or number:  
 Illinois Coal Report \_\_\_\_\_ p. \_\_\_\_\_

LATER OPERATORS

Date	Operator	Name or No.
2 1917	COFFEEN C. M. Co	2
3 1921	CLOVER LEAF COAL M. Co	2
4	Cosgrove-Meehan C. Co. (Clover leaf #4 in coal report.)	4
5		
6		
7		
8		
9		
10		
11		
12		
13		
14		

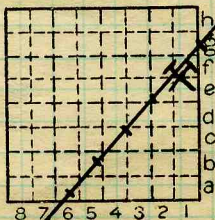


\* Also owners # See ownership sheet

Railroad, Wagon, Idle, Abandoned  
**SHIPPING MINE**

IDENTIFICATION

County No. **161** Coal No.   
 Quad. **202** Part   
 County **MONTGOMERY**



Sec. **3**  
 T. **7** N.  
 R. **3** S.  
 W.  
 Index No.

COAL MINE OPERATOR



( Sheets ) COAL PRODUCTION ( Sheet )

Period						Tons
Mo.	Day	Year	Mo.	Day	Year	
		1925			1926	Sd. : Dept. of Mines 0
					1927	

SUMMARIES

No.	to	No.

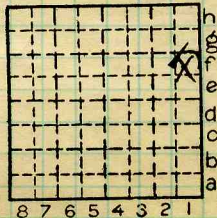
Railroad, Wagon, Idle, Abandoned

IDENTIFICATION

County No. 161 Coal No.

Quad. 202 Part

County Montgomery



Sec. 3  
 T. 7 N. S.  
 R. 3 E. W.  
 Index No.



LOCATION AND ELEVATION

Location: side T. St. L & W. R. R. R. R.
Cloverleaf side R. R.
C. Co. side Highway No.
on top. map Location sheet

Elevation: Method, 1. Est. ( ) ft. 634.05
2. Inst. (kind Plane Table - Winkler) 634.05 ft.

By Data sheet
DEPTH
Authority To coal ft.
Authority Rail to rail ft.
Top of coal above rail. (Est. Rule) ft.
To coal 534 ft.

ALTITUDE OF TOP OF COAL
By estimated data
By instrumental data 100 ft.

Thickness
Max. in. Min. in. Aver. 90 in.

GEOLOGICAL DATA
Mine notes, date
Coop No. Pyr. inv. Coal Ash inv.

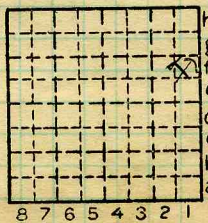
CHEMICAL DATA
Analyses Face U. I. B. M. Others
Car U. I. B. M. Others
Org. Sulf U. I. B. M. Others
Ash fusion U. I. B. M. Others
Ash anal. U. I. B. M. Others
U. I. B. M. Others

Classification
Misc. tests: Coking. Cleaning Boiler

Published descriptions:—

Railroad, Wagon, Idle, Abandoned

IDENTIFICATION
County No. 161 Coal No.
Quad. 202 Part
County Montgomery
Sec. 3
T. 7 N.
R. 3 W.
Index No. 2103.1f





2926

John C. Moore Corporation, Rochester, N. Y. Binder and holes in leaves, each Patented 1906.  
(85243-200-3-23)

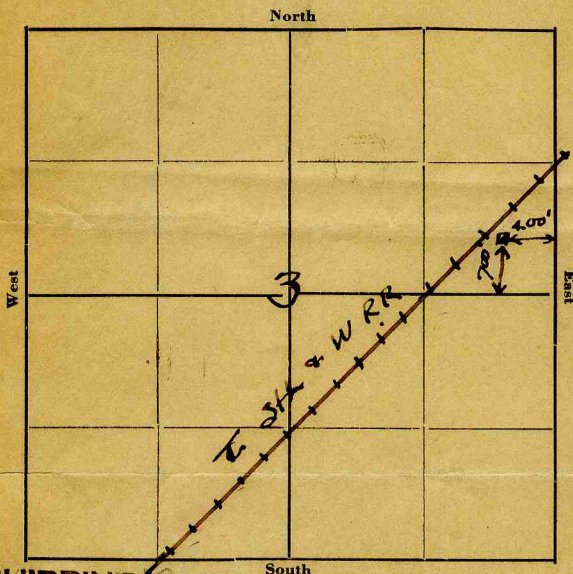
Mine Name or No. Clover Leaf Mine Address Coffeen  
Operator Clover Leaf Coal Co  
Main Office Address Warder Bldg Marion,  
Ill.

Location of Mine:

Township Name \_\_\_\_\_ County Montgomery

Section No. 3 Township 7 N Range 3 W

Indicate location of mine and position of R. R.  
in plat of section below.



Kindly state number of feet from quarter section lines:

..... from N. line

..... from E. line

..... from S. line

..... from W. line

Idle entire year 1921  Yes  
1922

~~Abandoned (date) 19~~

### SHIPPING MINE

Surface landing is 634+ feet above sea level or about \_\_\_\_\_ feet (above  
(below) railroad station at \_\_\_\_\_ (nearest town)

Depth to top of coal is 534 feet.

Average thickness of coal is 7 feet 6" inches.

Do not fill in below this line.

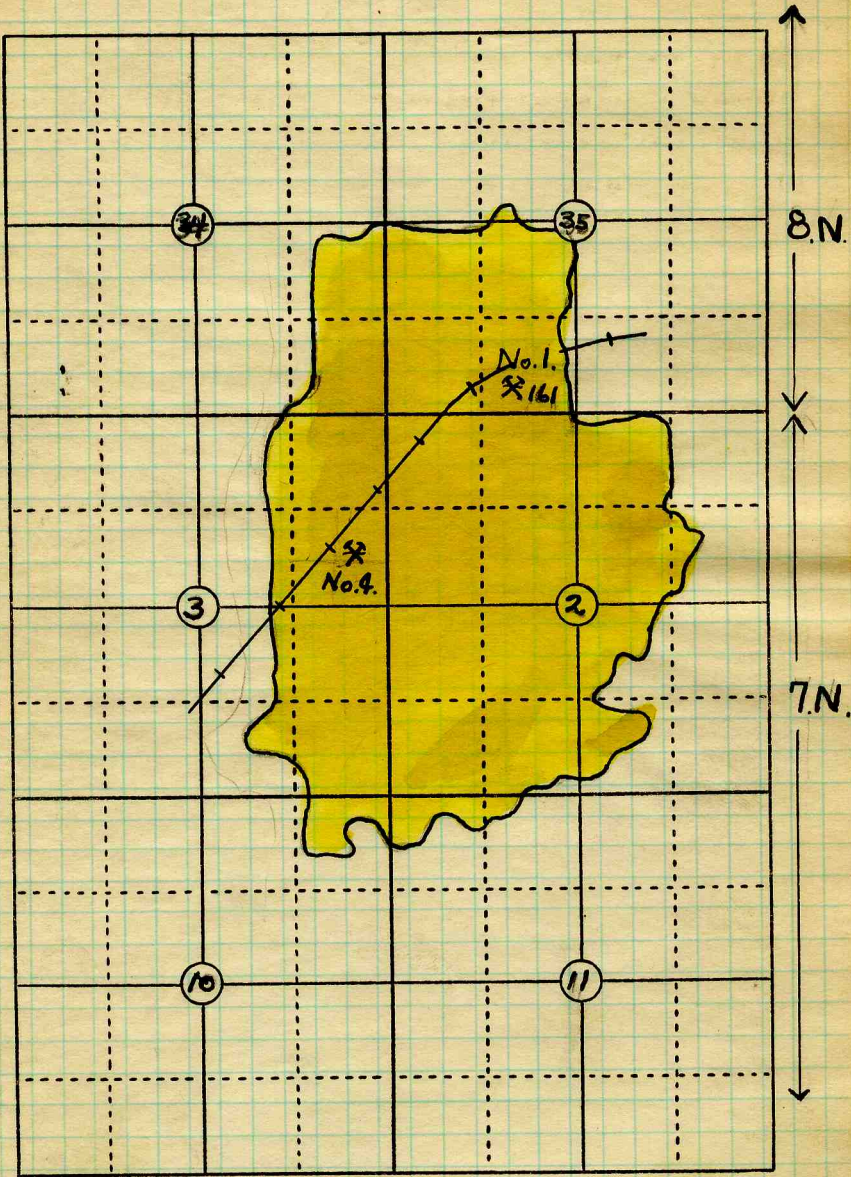
Coal Bed Name \_\_\_\_\_

Survey No. \_\_\_\_\_

County Montgomery

Index No. 2103

V-MINE LOCATION SHEET.



R3W

Date *Map. 1903.* Operator \_\_\_\_\_ Name or No. \_\_\_\_\_

County *Montgomery* *Cloverleaf Coal Co. 1 & 4.*  
 Index No. *1635.6a*  
*2/03.15*



Operator, \_\_\_\_\_ Date *May 25 '05*  
 Mine, *Coffee* Sec. \_\_\_\_\_ T. \_\_\_\_\_ R. \_\_\_\_\_  
 Located, \_\_\_\_\_ miles from *Coffee* *Clover Leaf P.P.*  
 Location in mine, *Right 2nd 1500 ft. N. 2nd sh.*

GRAPHIC SECTION		DESCRIPTION OF SECTION (AT POINT SAMPLED)		
In.	No.	No.	(Note character and thickness of roof)	Inches
0	1		<i>Roof, shale</i>	
	2		<i>Shale</i>	
	3		<i>Coal</i>	<i>71</i>
12	4		<i>Shale &amp; Sulphur</i>	<i>73</i>
	5		<i>Blue limestone (?)</i>	
24	6		<i>Coal</i>	<i>76</i>
	7		<i>Shale</i>	<i>77</i>
36			<i>Coal</i>	<i>72</i>
48				
60				
72	3			
84				
96				
(Note character and thickness of floor)				
Total thickness of coal.				<i>92</i>

Condition, \_\_\_\_\_ Time, \_\_\_\_\_ hr. \_\_\_\_\_ min.  
 Wt. Gross, \_\_\_\_\_ lbs. Net, \_\_\_\_\_ lbs.  
 What Nos. shipped by Co.?

Excluded from sample: No. *1, 3, 4, 6*  
 Sample represents *89* in. \_\_\_\_\_ tons.  
 Impurities? How do they occur?

*Bulletin 22, p 504*  
 Sample No. \_\_\_\_\_ Can No. \_\_\_\_\_ Lab. No. *B.M. 1661*

Collector, *J. N. Groves* Coal: Survey No. \_\_\_\_\_  
 Mine, \_\_\_\_\_ Co. *Montgomery* Index No. *2103*



Operator, *Coffeen* Date *Nov 18, 1904*  
 Mine, *Coffeen* Sec. T. R.  
 Located, *Coffeen* miles from *Coffeen*  
 Location in mine, *Room 1811 right 4* *Clower leaf R.H.*

GRAPHIC SECTION		DESCRIPTION OF SECTION (AT POINT SAMPLED)		
In.	No.	No.	(Note character and thickness of roof)	Inches
			<i>Roof S.S.</i>	
0	1		<i>Shale</i>	<i>1</i>
	2		<i>Coal</i>	<i>4</i>
12	3		<i>Shale &amp; sulphur</i>	
	4		<i>Blue limestone (?)</i>	<i>7 1/2</i>
24	5		<i>Coal</i>	<i>25 1/2</i>
	6		<i>Shale</i>	
26	7		<i>Coal</i>	
48				
60?				
72				
84				
96			<i>Floor, fire clay.</i>	
			(Note character and thickness of floor)	
			Total thickness of coal.	<i>97 1/2</i>

Condition, Time, hr. min.  
 Wt. Gross, lbs. Net, lbs.  
 What Nos. shipped by Co.?

Excluded from sample: No. *1346*  
 Sample represents *93* in. tons.  
 Impurities? How do they occur?

*Bulletin 22, p 504*

Sample No. Can No. Lab. No. *BM 1450*

Collector, *J. S. Burrows* Coal: Survey No.   
 Mine, *Co. Montgomery* Index No. *2103*





Operator, \_\_\_\_\_ Date *Nov 18, 1904*  
 Mine, *Coffee* Sec. \_\_\_\_\_ T. \_\_\_\_\_ R. \_\_\_\_\_  
 Located, \_\_\_\_\_ miles from *Coffee* *Clower Leaf R. R.*  
 Location in mine, *face of room 21 left entry 60*

GRAPHIC SECTION		DESCRIPTION OF SECTION (AT POINT SAMPLED)		
In.	No.	No.	(Note character and thickness of roof)	Inches
			<i>Roof S.S.</i>	
0	1		<i>Shale</i>	<i>3</i>
	2		<i>Coal</i>	<i>7.5</i>
12	3		<i>Shale &amp; sulphur</i>	<i>7.5</i>
	4		<i>Blue limestone (?)</i>	<i>7.7</i>
24	5		<i>Coal</i>	<i>9.5</i>
	6		<i>Shale</i>	<i>1.8</i>
36	7		<i>Coal</i>	<i>—</i>
48				
60				
72	4			
84				
96			<i>Floor, fire clay</i>	
			(Note character and thickness of floor)	
			Total thickness of coal.	<i>95</i>

Condition, \_\_\_\_\_ Time, \_\_\_\_\_ hr. \_\_\_\_\_ min.  
 Wt. Gross, \_\_\_\_\_ lbs. Net, \_\_\_\_\_ lbs.  
 What Nos. shipped by Co.?

Excluded from sample: No. *1 3 4 6*  
 Sample represents *90* in. \_\_\_\_\_ tons.  
 Impurities? How do they occur?

Sample No. \_\_\_\_\_ Can No. \_\_\_\_\_ Lab. No. *BM 1449*  
 Collector, *J. S. Burrows* Coal: Survey No. \_\_\_\_\_  
 Mine, \_\_\_\_\_ Co. *Montgomery* Index No. *2103*  
**R.—COAL SAMPLE SHEET.**



Symbol Description Inches

1 division=3 in.)

U.S. Geol. Surv. Bull. 22, p. 504.

COFFEEN. COFFEEN MINE.

*Sample.*—Bituminous coal; Illinois field; (Illinois Nos. 6, 6 B) analyses Nos. 1449, 1450, 1661 (p. 89).

*Mine.*—Coffeen; at Coffeen, on the Toledo, St. Louis & Western (Clover Leaf) Railroad.

*Coal bed.*—Herrin coal (Belleville, No. 6) of the United States Geological Survey, locally known as the Pana. Carboniferous age, Carbondale formation. Thickness, fairly uniform, averaging  $7\frac{1}{2}$  feet; bed disturbed by rolls; no regular partings; roof, massive black shale; floor, fire clay; cover, over 500 feet.

The bed was measured and sampled at two points (A and B) by J. S. Burrows, on November 18, 1904, and at another point (C) by J. W. Groves, on May 25, 1905, as described below:

*Sections of coal bed in Coffeen mine at Coffeen.*

Section.....	A	B	C
Laboratory No.....	1449	1450	1661
Roof, secs. A and B, sandstone; sec. C, shale.	<i>Ft. in.</i>	<i>Ft. in.</i>	<i>Ft. in.</i>
Shale <sup>a</sup> .....	0 3	0 1	.. ..
Coal.....	6 0	6 3	5 11
Shale and sulphur <sup>a</sup> .....	.. ..	.. ..	0 2
Blue limestone (?) <sup>a</sup> .....	0 2	0 3 $\frac{1}{2}$	.. ..
Coal.....	1 6	1 6	0 3
Shale <sup>a</sup> .....	.. ..	.. ..	0 1
Coal.....	.. ..	.. ..	1 3
Floor, fire clay.	.. ..	.. ..	.. ..
Thickness of bed.....	7 11	8 1 $\frac{1}{2}$	7 8
Thickness of coal.....	7 6	7 9	7 5

<sup>a</sup> Not included in sample.

Section A (sample 1449) was measured at the face of room 21 off left entry 6.

Section B (sample 1450) was measured at the face of room 18 off right entry 4.

Section C (sample 1661) was measured in right entry 2, 1,500 feet northwest of the shaft.

*Notes.*—At the time this mine was sampled it had been in operation 16 years, and the operator estimated that enough coal remained to warrant mining for about 2 years more. The rated capacity of the mine was 450 tons per day. The larger part (70 per cent) of the product was used by the Toledo, St. Louis & Western Railroad, the remainder going to points in Illinois for factory and domestic use. Slack was sold for steam production.

For results of tests of this coal, see mention of specific tests as follows—steaming tests: U. S. Geol. Survey Prof. Paper 48, p. 465; Bull. 260, p. 80; Bull. 290, p. 55; Bureau of Mines Bull. 23, pp. 59, 148; producer-gas tests: U. S. Geol. Survey Bull. 290, p. 57; Bull. 336, p. 12; Bureau of Mines Bull. 13, pp. 109, 272.

For chemical analyses see part I of this bulletin, p. 89; also U. S. Geol. Survey Prof. Paper 48, p. 211; Bull. 261, p. 37; Bull. 290, p. 55.

Collector,

Mine. *Coffeen* Co. *Montgomery*

Coal: Survey No. *6*

Index No. *2103.96*

Q.—COAL SECTION SHEET.



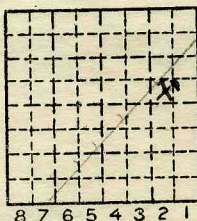
Location and Elevation Data

Location: Exact Approximate  
(Approximate only if no trace of record of original exists)  
Location by VDW  
Date 7/12/39 Notebook No. 635 Page 41-451  
Looseleaf ref. \_\_\_\_\_  
Map files No. 10-68-19

Description of Location

Position in sec., 1/4 sec., 40 acres

\_\_\_\_\_ feet from North line  
72.5 feet from East line  
2.975 feet from South line  
\_\_\_\_\_ feet from West line



Sec. 3  
T 7 N.  
R 3 W.

Other description: \_\_\_\_\_  
Farm \_\_\_\_\_  
No. \_\_\_\_\_  
Company Cosgrove  
No. 4  
County No. 197

Elevation 628.70 ft.

By VDW

Method: Level, transit, alidade, hand level

Elevation of grd  
Height of point above ground \_\_\_\_\_  
Date 7/12/39 Notebook 635 P. 41-451  
Looseleaf ref. \_\_\_\_\_

Map files No. 10-68-19  
Description of item: (drill hole, mine, etc.) Airshaft - Abd

County Mont Quadrangle Coffeen Index No. 2103 E2