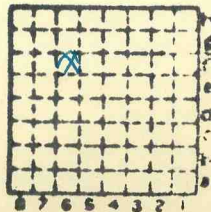


IS65 Index No. 4080

C. J. Bruce
L 40

358



Sec. 25

T. 9 N. S.

R. 3 E. W.

Index No.

✓



Mine originally operated by: (1) Charles J. Bruce

Date 1936

(1834)

Original name or number:
Illinois Coal Report 1936 p.

LATER OPERATORS

Date	Operator	Name or No.
2		
3		
4		
5		
6		
7		
8		
9		
10		
11		
12		
13		
14		

*Also owners

#See ownership sheet

Railroad, Wagon, Strip, Idle, Abandoned

Slope Mine

IDENTIFICATION

County No. _____

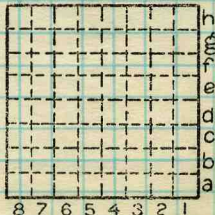
Coal No. 5

Coal Report No. L-40



Quad. Marion

County Williamson



Sec. 25

T. 9 S.

R. 3 E. W.

Index No.

0725

COAL MINE OPERATOR



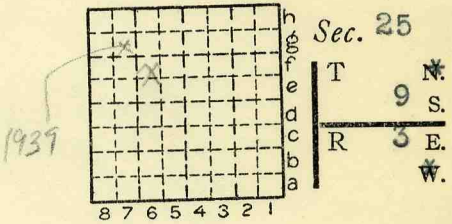
Location and Elevation Data

Location: Exact Approximate
(Approximate only if no trace of record of original exists)
Location by Dept Mines & Minerals
Date Notebook No. Page
Looseleaf ref.
Map files No.

Description of Location

Position in sec., 1/4 sec., 40 acres

feet from North line
feet from East line
feet from South line
feet from West line



Other description: N 1/2 NW 1/4 SE
L-40

Farm
No.
Company Charles J. Bruce
No.
County No.

Elevation ft.
By

Method: Level, transit, alidade, hand level

Elevation of
Height of point above ground
Date Notebook P.
Looseleaf ref.

Map files No.

Description of item: (drill hole, mine, etc.) Slope Mine

County Williamson Quadrangle Marion Index No. 0725

1939 37' to 44" of #5