

FINK CC AUGER # 2

OPENED 1959

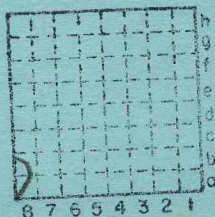
ABANDONED: DEC, 1961

AUGER MINE

10S
7E

Fink Coal Co. #2

L-109



Sec. 13
T. 9 S.
R. 7 E.
Index No. 110

Saline

Mine originally operated by: (1)

Date

Sept 1958

FINK COAL CO

#2

Original name or number:

Illinois Coal Report 1958 p. 22

LATER OPERATORS

Date	Operator	Name or No.
2		
3		
4		
5		
6		
7		
8		
9		
10		
11		
12		
13		
14		

2
3
4
5
6
7
8
9
10
11
12
13
14

*Also owners

#See ownership sheet

Railroad, Wagon, Strip, Idle, Abandoned

IDENTIFICATION

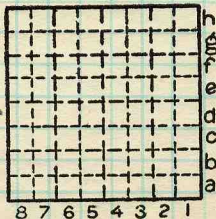
County No. _____

Coal No. 5

Coal Report No. L-109

Quad.

County SALINE



Sec. B

T. [initials] S. [initials]

R. [initials] E. [initials]

Index No.

COAL MINE OPERATOR





Period				Tons			
Mo.	Day	Year	Mo.	Day	Year		
						1	356
idle After Dec. 1958							
Abn. May 1959							

SUMMARIES

No.	to	No.					

Railroad, Wagon, Strip, Idle, Abandoned

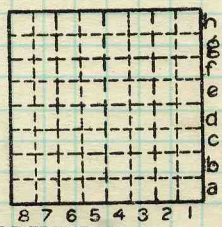
IDENTIFICATION

County No. _____ Coal No.

Coal Report No. L-109

Quad. _____

County SALINE



Sec. 10

T. 10 #

R. 1 S.

Index No. E.

W.

