



Form 180

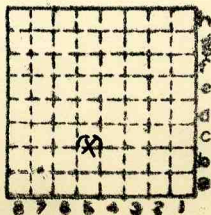
Southern Ill. Coal Co. #21

Co. No. 268

S-5

Mine index # BM 19

433



Sec. 24

T.	7	N.
		S.
R.	2	E.
		W.

Index No.



Mine originally operated by: (1)
 Date West Frankfort Coal Co.
1911

Original name or number:
 Illinois Coal Report 1911 p.

LATER OPERATORS

Date	Operator	Name or No.
2 1919	Southern Gem Coal Corp. Mine	#1
3 1928	Brewerton Coal Co.	#21
4 1933	West Frankfort Coal Corp.	#21
5 1935	West Mine Coal Corp.	
6 1935	Interstate Coal Co.	#21
7 1936 (1st 4 mos.)	West Mine Coal Corporation	#21
8 1936 (last 4 mos.)	Frankfort Coal Company	#21
9		
10 1937	Southern Illinois Coal Co.	#21
11		
12		
13		
14		

* Also owners #See ownership sheet

Railroad, Wagon, Idle, Abandoned Shaft 450'

C.&E.I., C.B.&O., I.C.
 IDENTIFICATION

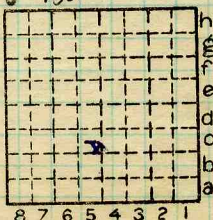
County No. 268

Coal No. 6

W. Frankfort

Quad. 263

Part



Sec. 24

T. 7 S.

R. 2 E.

Index No.

County Franklin

1124 c5

COAL MINE OPERATOR



(Sheets) COAL PRODUCTION (Sheet)

No.	Period						Tons	
	Mo.	Day	Year	Mo.	Day	Year		
			1934			1935	36	879
15	(1st 4 mos.)					1936	64	958
21	(last 4 mos.)					1936	59	612
5	1	1	1937	12	31	1937	143	606

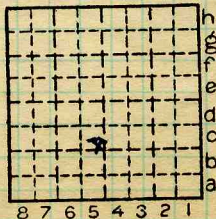
#7

SUMMARIES

No.	to	No.		
1911		1934	6	971
			7	102
				269
				728

Railroad, Wagon, Idle, Abandoned
IDENTIFICATION

County No. 268 Coal No. 6
W. Frankfort
Quad. 263 Part
County Franklin



Sec. 24

T. 7 S.

R. 2 E.

Index No. 1124 c5



LOCATION AND ELEVATION

Location: side R. R.
 side R. R.
 side Highway No.

on top. map Location sheet

Elevation: Method, 1. Est. () ft.
 2. Inst. (kind Level) 405.7 ft.

By Co. Eng. Data sheet

DEPTH

Authority To coal 450 ft.
 Authority Rail to rail _____ ft.
 Top of coal above rail. (Est. Rule) _____ ft.
 To coal 445 ft.

ALTITUDE OF TOP OF COAL

By estimated data _____
 By instrumental data -40 ft.

Thickness

Max. in. Min. in. Aver. 108 90 in.

GEOLOGICAL DATA 108

Mine notes, date Little

Coop No. BM. 19 Pyr. inv. Coal Ash inv.

CHEMICAL DATA

Analyses Face U. I. B. M. Bull. 22 (1) Frankfort Mine Dilavon Others 9218-9225
 Car U. I. B. M. Others
 Org. Sulf U. I. B. M. Others
 Ash fusion U. I. B. M. Others
 Ash anal. U. I. B. M. Others
#BM19 U. I. B. M. Others

Classification R.I. 130 U.C.I. 146

Misc. tests: Coking. Cleaning Boiler

Published descriptions:—

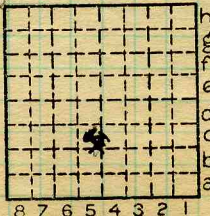
Railroad, Wagon, Idle, Abandoned

IDENTIFICATION

County No. 268
W. Frankfort
 Quad. 263
 County Franklin

Coal No. 6

Part



Sec. 24

T. 7 N. S.
 R. 2 E. W.

Index No.

1124.05

COAL MINE LOCATION AND DATA



Location and Elevation Data

Location: Exact Approximate

(Approximate only if no trace or record of original exists)

Location by W. B. Roe
 Date August 1, 1930 Notebook No. 614 Page 25(2203)
 Looseleaf ref. _____
 Map files No. 5-28-28

Description of location

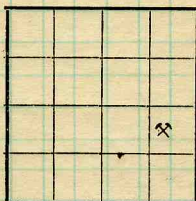
Position in sec., 1/4 sec., 40 acres

_____ feet from North line

975 feet from East line

1950 feet from South line

_____ feet from West line



Sec. 24

T.	7	S.
R.	2	E.

Other description: MN

Farm _____

No. _____

Company _____

Brewerton Coal Co.

No. 21 mine

County No. 102

Elevation 500.0 ft.

By T.M.

Method: Level, transit, alidade, hand level

Elevation of _____

Height of point above ground _____

Date _____ Notebook _____ P. _____

Looseleaf ref. _____

Map files No. _____

Description of item: (drill hole, mine, etc.) Air shaft - shipping mine

County _____ Quadrangle _____ Index No. _____

Franklin

W. Frankfort

1124. Se CR