





( Sheets ) **COAL PRODUCTION** ( Sheet )

Period						Tons			
Mo.	Day	Year	Mo.	Day	Year				
					1913	27482			
					1914				

**SUMMARIES**

No. to No.

Railroad, Wagon, Strip, Idle, Abandoned

**IDENTIFICATION**

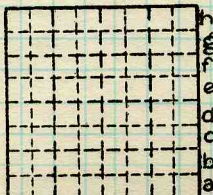
County No. \_\_\_\_\_

Coal No. \_\_\_\_\_

Coal Report No. \_\_\_\_\_



Quad. *FITHIAN*  
County *VERMILION*



Sec. *9*

T. *19* N.

R. *8*

R. *13* W.

Index No.

**COAL MINE—PRODUCTION**

ILLINOIS GEOLOGICAL SURVEY, URBANA

*1909A3*  
*1809C3*





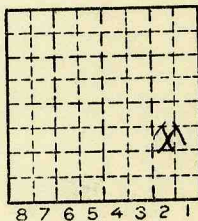
Location and Elevation Data

Location: Exact Approximate  
 (Approximate only if no trace of record of original exists)  
 Location by MINE NOTES & Bull. 14 (Tap 17 error) & G.M.W.  
 Date..... Notebook No..... Page.....  
 Looseleaf ref.....  
 Map files No.....

Description of Location

Position in sec., 1/4 sec., 40 acres

.....feet from North line *S. side of R.R.*  
 .....feet from East line  
 .....feet from South line  
 .....feet from West line



Sec. 9  
 T 19 N.  
 R E.  
 12 W.

Other description: New 1913 Abd. 1914 Farm.....  
#7 coal No.....  
G.M.W. "Mine abandoned - unable to hold entries" Company Davis Black Diamond Coal Co. (Hartshorn Coal Co.)  
 No. Black Diamond  
 County No.....

Elevation.....ft.  
 By.....

Method: Level, transit, alidade, hand level

Elevation of.....  
 Height of point above ground.....  
 Date..... Notebook..... P.....  
 Looseleaf ref.....

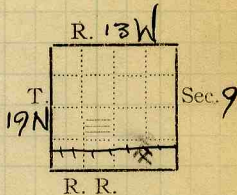
Map files No.....  
 Description of item: (drill hole, mine, etc.) Shaft mine Abd.

County Terminon Quadrangle Danville (149) Index No. 1909 C3  
 (50167-5M-2.38) 2



COAL MINING INVESTIGATIONS  
COOPERATIVE AGREEMENT

Mine Name or No., Black Diamond  
 mile from  
 Operator, 191 Davis Black Diamond Coal Co.  
 Operator, 191 Hartshorn Coal Co.



Entrance, Elev., ft. { above,  
 Depth to bottom coal, ft. Alt. below,

SURFACE DATA.

- A. Topography See
- B. Surficial materials, (1) Character
- (2) Thickness, (3) Effect on mining and shaft-sinking, of former drainage lines, underground water strata, etc.

- C. Outcrops, (1) Character, See
- (2) Structure, See
- (3) Fossil horizons See
- Collection No.,
- (4) Evidences of subsidence, See
- D. Note collection of mine maps, drill records and shaft logs.

See drill record sheet.

- E. Notes on surrounding area,

See

Coal bed name: Local,

Collector,

Mine, Black Diamond

L.—SURFACE SHEET (Geol.)

COUNTY

Co.

Vermilion

Survey

COUNTY NO.

State No. 542

Co-op. No.

(2109) 1909

Mine originally operated by: (1)

Date

1913

*Black Diamond MC*

Original name or number: *B-D-*

Illinois Coal Report          p.         

LATER OPERATORS

Date	Operator	Name or No.
2		
3		
4		
5		
6		
7		
8		
9		
10		
11		
12		
13		
14		

\*Also owners

#See ownership sheet

Railroad, Wagon, Strip, Idle, Abandoned

IDENTIFICATION

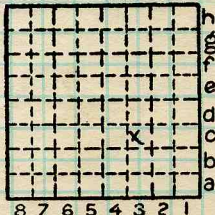
County No. \_\_\_\_\_

Coal No. \_\_\_\_\_

Coal Report No. \_\_\_\_\_

Quad. *149*

County *Vermilion*



Sec. *9*

T. *19* N. *8*

R. *12* W. *1*

Index. No.

COAL MINE OPERATOR

*1809C3*

