

MI 682 - Midwest Smokeless 1939-40
 Midwest Radiant 1940-51.
 listed as L-71-

This is a strip operation. The tippie is located in Sec. 34-1N-9W, but the pits are not confined to that location. Mine notes are filed in mine notes book under Midwest Radiant Fuel Corp. # 1, coal report No. L-71.

In 1951, the Dept. of Mines and Minerals assigned a different Coal Report No. to the mine because production was begun in a new pit. After 1950, the mine is listed as L-90 in the Coal Reports.

Abandoned:
 January, 1971

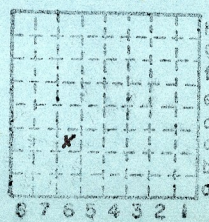
MI 653
 L-90
 then S-96

~~Midwest Radiant Fuel Corp. # 1 (1951-1957)~~
 Peabody Coal Co. "Midwest Strip" (1958----)

R - F



L-90



Sec. 34
 T. 1 N.
 R. 9 W.
 Index No.

Mine Index 653
 St. Clair

Midwest Quadrangle
 checked - LDU - C-6

Mine originally operated by: (1)

Midwest Radiant Fuel Co.

Date

1951

Original name or number: # 1

Illinois Coal Report 1951 p. 60

LATER OPERATORS

Date

Operator

Name or No.

2 1958 Peabody Coal Co. "Midwest"

3

4

5

6

7

8

9

10

From 1939 to 1950 this mine was reported as L-71 in annual coal reports.

11

12 1965 Peabody Coal Co. "Midwest Strip"

13

14

*Also owners

#See ownership sheet

Railroad, Wagon, Strip, Idle, Abandoned

IDENTIFICATION

County No. 762

Coal No.

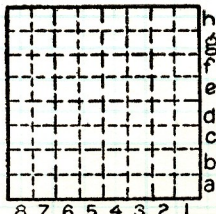
Coal Report No. L-90

6

Quad.

County

St. Clair COAL MINE OPERATOR



Sec. 34

T. 1 N. ~~8~~

R. 9 W. #

Index No.



(Sheets) COAL PRODUCTION (Sheet)

Period				Tons	
Mo.	Day	Year	Mo.	Day	Year
		1961			
		1952			
		1953			
		1954			
		1955			
		1956			
		1957			
		1958			
		1959			
		1960			
		1961			
		1962			
		1963			
		1964			
		1965			
		1966			
		1967			
		1968			
		1969			
		1970			
		1971			
		ABD. 1972			

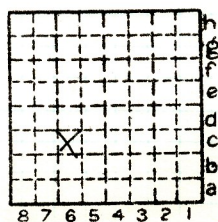
SUMMARIES		
No.	to	No.

Railroad, Wagon, Strip, Idle, Abandoned

IDENTIFICATION

County No. 762
 Coal Report No. L-90
 Quad.
 County ST. CLAIR

Coal No. 6
 1



Sec. 34

T. 1 N.
 R. 9 W.
 Index No.

COAL MINE—PRODUCTION 5 mi. NE of Millstadt
 ILLINOIS GEOLOGICAL SURVEY, URBANA 3 1/2 mi. from Hwy 9

Supt. Fred Schroder

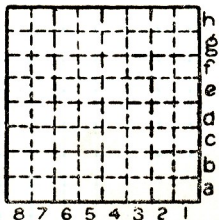
Strip 35' to 6'0" coal

Peabody C.C., Midwest
6 Coal

By _____ Date _____

Quad. Waterloo Part _____

County St. Clair # 762



Sec. 25
 T. 2 N.
 R. 9 W.
 Index No. L-90

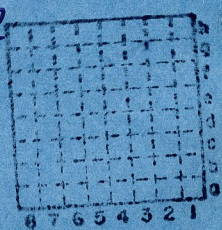
Abandoned:
May, 1970

Peabody Coal Co.

R - F

Midwest Hi Wall #2

~~L 90~~
S-96



Sec. 34
T. 1 N.
R. 9 E.
Index No. 14

Mine Index
St. Clair



(Sheets) COAL PRODUCTION (Sheet)

Period						Tons	
Mo.	Day	Year	Mo.	Day	Year		
					1967	283	032
					1968	517	766
					1969	407	416
					1970	184	372

SUMMARIES					
No.	to	No.			

Railroad, Wagon, Strip, Idle, Abandoned

IDENTIFICATION

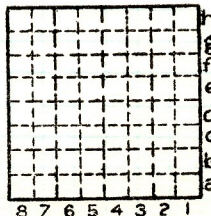
County No. _____

Coal No. 6

Coal Report No. 190

Quad. 5-96

County ST. CLAIR



Sec. 34

T. 1 N.

R. _____ E.

Index No. 9 W.

COAL MINE—PRODUCTION

ILLINOIS GEOLOGICAL SURVEY, URBANA



This is a strip operation. The tipple is in 34-1N-9W, but the pits are not confined to that location. Mine notes for pit locations are filed here also. (The varying locations of the pit and tipple account for the two mine index numbers and also two coal report numbers.) See the mined out area map.

See active local book.

L-90 54' 9" DEPTH OF COAL
6' 6" COAL THICKNESS
FROM 1961 M+M REPORT
LDA

L-90 ABANDONED JAN, 1971

R. F

Peabody Coal Co. "Midwest" Mine

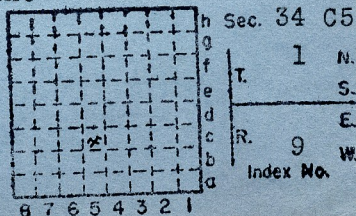
L-90 & L-71

Mine Index

Mine Index Nos. 682 & 653

County No. 762

ST. CLAIR County



Section in E. creek bank 1/8 mi. S. of road

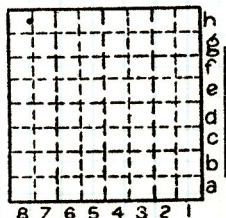
- 6'+ Sandstone, light ^{tally} olive gray, horizon bedded, fine-medium grained, moderately friable, same fucoids small limonite ^{stained} spots, micaceous, with flakes ^{parallel} to bedding, some calcite on bedding moderately hard; shale lenses 1/4" thick.
- 10 1/4" Sandstone, light gray, ^{argillaceous} original, micaceous, micaceous with no preferred ~~direction~~ orient, a little chalc^{pyr}, poorly bedded, soft, fine ~~grained~~ grained.
- 1' 2" Shale, medium gray, poorly bedded, traces gypsiferous, soft, limonite ^{stained}, very slightly fossiliferous with sandstone lenses up to 4" thick, dark reddish brown, massive, ^{argillaceous} original, soft, very fine grained, fossils, limonite stained.
- 1 3/4" Coal, normally banded, pyrite on vertical and horizontal joints, limonite stained, melanterite
- 3'+ ~~W~~el. light gray, non-bedded, stigmarian, slicked, limonite stained.

Dips slightly to E.

By M E O Date 7/24/54

Quad. 247 Part _____

County St. Clair



Sec. 34
 N.
 T. 1 S.
 E.
 R. 9 W.
 Index No.

This is a strip operation. The tipple is located in Sec. 34-1N-9W, but the pits are not confined to that location. Mine notes for pit locations are filed here. (In 1951, the ~~Bureau~~ *Dept.* of Mines and Minerals assigned a different Coal Report number to the mine because production was begun in a new pit. The mine name, however, remained the same. After 1950, the mine is listed as L-90 in the annual coal reports.)

R.D.W.
1965

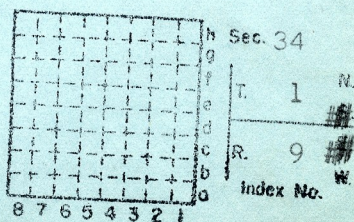
Midwest Radiant Fuel Corp. # 1
Mine Index

R **F**

Mine index no. 653 & 682

County no. 762

L-71



St. Clair



Mine originally operated by: (1) *MIDWEST SMOKELESS FUEL CO.*

Date
1939

Original name or number:
Illinois Coal Report 1939 p.

LATER OPERATORS

Date	Operator	Name or No.
2 1940	<i>MIDWEST RADIANT ^{Fuel} CORP.</i>	1
3	Not reported after 1950 as L-71, see L-90.	
4		
5		
6		
7		
8		
9		
10		
11	<i>listed with shipping mines: see local active mines</i>	
12	<i>sunk mine in 1938</i>	
13	<i>35' To COAL (1948 Operator's report)</i>	
14		

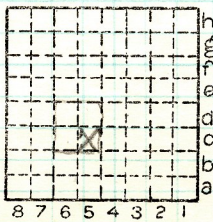
*Also owners #See ownership sheet

Railroad, Wagon, Strip, Idle, Abandoned

IDENTIFICATION

County No. 762
 Coal Report No. L-71
 Quad. WATERLOO (247)
 County ST. CLAIR

Coal No. 6
 6'0"



Sec. 34
 T. 1 N.
 R. 9 W.
 Index No.

COAL MINE OPERATOR

063405



Midwest Smokeless Fuel Corp.

(Sheets)

COAL PRODUCTION

(Sheet)

Period						Tons	
Mo.	Day	Year	Mo.	Day	Year		
<u>LOCAL</u>						325	275
					1939	592	938
					1940	512	746
					1941	536	275
					1942	655	000
					1943	604	658
					1944	566	397
					1945	629	280
					1946	659	358
					1947	679	446
					1948	633	458
					49	612	586
					50		

Further production listed under new number L-90.

SUMMARIES

No. to No.

Railroad, Wagon, Strip, Idle, Abandoned

Strip

Sec. 34

IDENTIFICATION

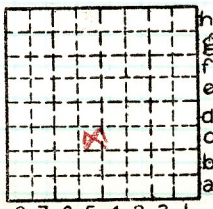
County No. 762

Coal No. 6

Coal Report No. L-71

Quad. Waterloo

County St. Clair



T. 1 N.
X
R. 9 W.
Index No.

0634 C5

COAL MINE—PRODUCTION

ILLINOIS GEOLOGICAL SURVEY, URBANA



LOCATION AND ELEVATION

Location: 5 miles side R. R.
 NE of Millstadt ~~side~~ R. R.
 2 1/2 miles side Highway No. 9
 on top. map Location sheet

Elevation: Method, 1. Est. () ft.
 2. Inst. (kind) ft.

By Data sheet

DEPTH

Authority Dmm - 10-57 To coal 40 ft.
 Authority Rail to rail ft.
 Top of coal above rail. (Est. Rule) ft.
 To coal ft.

ALTITUDE OF TOP OF COAL

By estimated data
 By instrumental data ft.

Thickness
 Max. in. Min. in. Aver. 72" in.

GEOLOGICAL DATA

Mine notes, date

Coop No. Pyr. inv. Coal Ash inv.

CHEMICAL DATA

Analyses Face	U. I.	B. M.	Others
Car	U. I.	B. M.	Others
Org. Sulf	U. I.	B. M.	Others
Ash fusion	U. I.	B. M.	Others
Ash anal.	U. I.	B. M.	Others
	U. I.	B. M.	Others

Classification

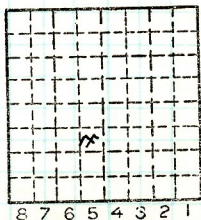
Misc. tests: Coking. Cleaning Boiler

Published descriptions:—

Railroad, Wagon, Idle, Abandoned

IDENTIFICATION

County No. 762 Coal No.
 Quad. Part
 County ST. CLAIR



Sec. 34 C5
 T. 1 N.
 R. 9 W.
 Index No.

COAL MINE LOCATION AND DATA



Operator, *Midwest Smokeless Fuel Corp* Date *Sept. 18 1939*
 Mine, *Strip* Sec. *3* T. *15* R. *4 W*
 Location in mine, *Face of no 1 pit.* *pit 100.*

GRAPHIC SECTION		DESCRIPTION OF SECTION (AT POINT SAMPLED)		
In.	No.	No.	(Note character and thickness of roof)	Inches
20	1		TOP coal	20
3/4	2		Fusain (soft)	3/4
10	3		Coal	10
1/2	4		Fusain (soft)	1/2
14	5		Coal	14
2	6		Carb. clay band, Pyrite lenses	2
9 1/2	7		Coal	9 1/2
1/2	8		Fusain (hard)	1/2
14	9		Coal	14
	10		underclay	
<i>face badly shattered by shooting & loading</i>				
(Note character and thickness of floor)				
Total thickness of coal.				
		Condition, <i>dry</i>	Time, hr. min.	
		Wt. Gross, <i>40</i> lbs.	Net, lbs.	
What Nos. shipped by Co.?				
Excluded from sample: No. <i>6810</i>				
Sample represents <i>72</i> in. tons.				
Impurities? How do they occur? <i>bands + lenses</i>				

(1 division=3 in.)

Sample No. *C-2190* Can No. *001* Lab. No.
 Collector, *L.C. McCabe B.C. Parks* Coal: Survey No. *6*
 Mine, *Midwest Smokeless Fuel Co.* Co. *St. Clair* Index No. *1303*
 R.—COAL SAMPLE SHEET. (12759—1000—2-29) 7



Operator, *Mid. W. Smo. Fuel Corp.* Date _____
 Mine, *Strip* Sec. *3* T. *15* R. *9 W*
 Location in mine, *60' So. of 601* *pit location*

GRAPHIC SECTION		DESCRIPTION OF SECTION (AT POINT SAMPLED)	
In.	No.	No.	Inches
		(Note character and thickness of roof)	
<i>35</i>		<i>badly broken coal Pyrite & blue band coal underclay</i>	
<i>2</i>			
<i>18</i>			
		(Note character and thickness of floor)	
		Total thickness of coal.	
		Condition, <i>dry</i>	Time, hr. min.
		Wt. Gross, <i>60</i> lbs.	Net, lbs.
		What Nos. shipped by Co.?	
		Excluded from sample: No. <i>Blue band</i>	
		Sample represents <i>53</i> in. tons.	
		Impurities? How do they occur? <i>bands & lenses</i>	

(1 division=3 in.) *Sample from low place (roll) in coal*

Sample No. *C-2191* Can No. *605* Lab. No. _____

Collector, *P.C. McCabe, B.C. Parks* Coal: Survey No. *6*
 Mine, *Midwest Smokeless Fuel Co.* Co. *St. Clair* Index No. *1303*



Location and Elevation Data

Location: **Exact** Approximate

(Approximate only if no trace of record of original exists)

Location by G.H.C. (infield)

Date..... Notebook No..... Page.....

Looseleaf ref.....

Map files No.....

Description of Location

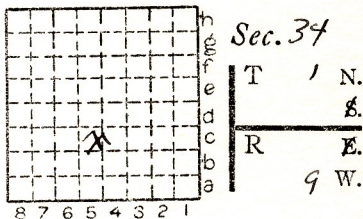
Position in sec., 1/4 sec., 40 acres

.....feet from North line

.....feet from East line

.....feet from South line

.....feet from West line



Other description: L-71

1/4 mi. from W line

1/5 mi. from S. line

Farm.....

No.....

Company Midwest Smokeless

Fuel Co.

No.....

County No. 762

592938

Elevation..... ft.

By.....

Method: Level, transit, alidade, hand level

Elevation of.....

Height of point above ground.....

Date..... Notebook..... P.....

Looseleaf ref.....

Map files No.....

Description of item: (drill hole, mine, etc.) Strip Mine

County St. Clair Quadrangle Waterloo Index No. 0034 C5

(A4242-5M-8-39) 2 (247)

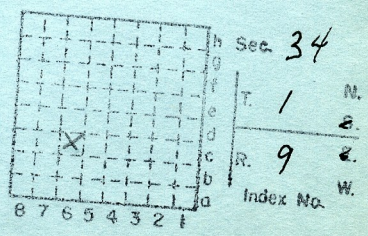
abandoned 3/65

R - F

Peabody Coal Co. "^{strip}Midwest Drift"
(Location is for tipple)

Same tipple as
strip mine

S-95



Mine Index

St. Clair

Mine originally operated by: (1)

Date

Original name or number:

Illinois Coal Report 1964 p. 40

LATER OPERATORS

Date	Operator	Name or No.
2 1965	Peabody Coal Co.	"Midwest Drift"
3		
4		
5		
6		
7		
8		
9		
10		
11		
12		
13		
14		

*Also owners

#See ownership sheet

Railroad, Wagon, Strip, Idle, Abandoned

Drift mine

IDENTIFICATION

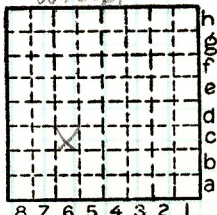
County No. _____

Coal No. 6

Coal Report No. S-95

Quad.

County St. Clair



Sec. 34

T. 1 N. ~~2~~

R. 9 W. ~~10~~

Index No.

COAL MINE OPERATOR





(Sheets) COAL PRODUCTION (Sheet)

Period						Tons			
Mo.	Day	Year	Mo.	Day	Year				
					1964	270	943		
					1965	58	819		

SUMMARIES					
No.	to	No.			

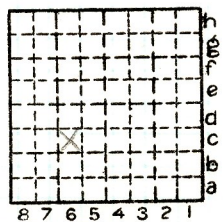
Railroad, Wagon, Strip, Idle, Abandoned

Sec. 34

IDENTIFICATION

County No. _____
 Coal Report No. _____
 Quad. _____
 County St. Clair

Coal No. 6



T. 1 N.
 R. 9 W.
 Index No.

COAL MINE—PRODUCTION

ILLINOIS GEOLOGICAL SURVEY, URBANA

