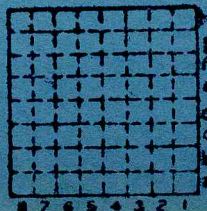


-- Only information on this mine from EFT
notes from Joseph Firth, mine inspector for
6th district(see next page).

Cherry mine

Mine Index 4555

MACOUPIN county



Sec. 4

T. 12 N. S.

R. 9 W. E.

Index No.

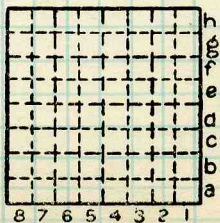
The Cherry mine is located north of the Mustard mine, about SE NW NE sec. 4

This mine was opened in 1931 or 32 and went about 40 ft. to the coal.

By EFT Date 6/8/37

Quad. _____ Part. _____

County MACOUPIN



4
Sec. N.
T. 12
R. 9 W.
Index No.