

Illinois State Geological Survey

.7fg .67g

(0636.17 and .28) H.R.W.

August 21, 1930

Two small ravines s. of Rocky Cr. ravine with clay pit show poorly.

Section of sh. over coal #7 with abundant larger ironstone concr. which form bulk of float in these creeks.

.67g

(0636.28) H.R.W.

Eastern most of these ravines shows in lower part

Slate, blk. fissile with conodonts 3'

Sh. dk. gray soft 9"

Coal 6"

Dk. gray clay 1/2"

Coal 11"

Underclay only top exposed.

(0636) J.M.W.

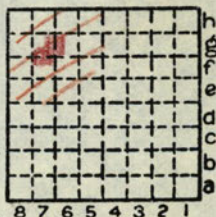
1927

NW/4 section 36.

Two coal mines are located along creek bottom. One old and other new. Few fossils from old one west of road.

Limestone (Rock Creek) outcrops along road on south side of hollow. Also caps the hill at Old (New?) Salem State Park 1/2 mile north. Limestone underlain by micaceous gray shale well exposed in shale pit just north in section 25.

Weller's Menard County fossil collection #2.



By H. R. Wanless Date 1930, 27

J.M.Weller

Quadrangle Tallula

County Menard Sec. 36 T. 18N R. 7W

FIELD NOTES

Illinois State Geological Survey

(0636)

Mine Index 2948

1927

NW/4 section 36. Small coal mine dump--east side
of state highway.

Fragments of fusulina limestone said to be
12' thick. Probably cap of No. 6.

Weller's Menard County fossil collection #5.

By J. M. Weller Date 1927

Quadrangle Tallula

County Menard Sec. 36 T 18N R 7W

