

DS65 Index No. 4126.

Jackson Bank cc

527

	h
	g
	f
	e
	d
	c
	b
	a
8	
7	
6	
5	
4	
3	
2	
1	

Sec. 30

T. 9 N. S.

R. 4 E. W.

Index No.

0830 05



Mine originally operated by: (1)

Jackson B K Coal Co.

Date

Original name or number:

Illinois Coal Report

p.

LATER OPERATORS

Date

Operator

Name or No.

2

3

4

5

6

7

8

9

10

11

12

13

4' of coal with blk. sl + ls. above. Base not exposed  
-J.H. Hughes

14

\* Also owners

#See ownership sheet

Railroad, Wagon, Idle, Abandoned **Strip**

IDENTIFICATION

County No.

527

Coal No.

6

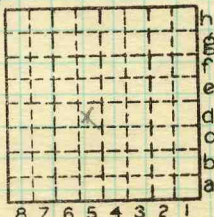
Part

Quad.

Marion

County

Williamson



Sec. 30

T.

N. 9 S.

R.

E. 4 W.

Index No.

0830 d5

COAL MINE OPERATOR







LOCATION AND ELEVATION

Location: side R. R. side R. R. side Highway No.

on top. map Location sheet

Elevation: Method, 1. Est. ( ) ft. 2. Inst. (kind F) 567 ft.

By Data sheet

DEPTH

Authority To coal ft.

Authority Rail to rail ft.

Top of coal above rail. (Est. Rule) ft.

To coal 27 ft.

ALTITUDE OF TOP OF COAL

By estimated data

By instrumental data 540 ft.

Thickness

Max. in. Min. in. Aver. in.

GEOLOGICAL DATA

Mine notes, date

Coop No. Pyr. inv. Coal Ash inv.

CHEMICAL DATA

Table with 4 columns: Analyses Face, U. I., B. M., Others. Rows include Car, Org. Sulf, Ash fusion, Ash anal.

Classification

Misc. tests: Coking. Cleaning Boiler

Published descriptions:—

Railroad, Wagon, Idle, Abandoned Strip

IDENTIFICATION

County No. 527

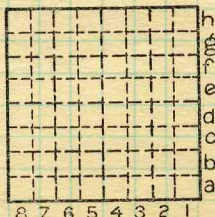
Coal No.

6

Part

Quad. Marion

County Williamson



Sec. 30

T. 9 N. S.

R. 4 E. W.

Index No. 0830 d5

COAL MINE LOCATION AND DATA