

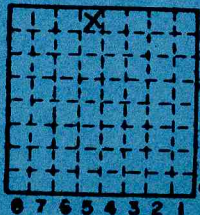


Form 180 Blue

may be G1 see map on microfilm
reel 3141
frame 143

Two Rivers C.C.

mine index 924 S-62



Sec. 17
T. 19 N.
S.
R. 11 W.
Index No.

✓ VERMILION County



Mine originally operated by: (1)

Date

Original name or number:
Illinois Coal Report 1952 p.

LATER OPERATORS

Date	Operator	Name or No.
2	1952 Two RIVERS COAL CO. Denville	
3		
4		
5		
6		
7		
8		
9		
10		
11		
12		
13		
14		

*Also owners

#See ownership sheet

Railroad, Wagon, Strip, Idle, Abandoned

IDENTIFICATION

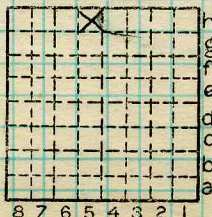
County No. _____

Coal No.

Coal Report No. 5-62

Quad.

County VERMILION



Sec. 17

T. 19 N. S

R. 11 E. W

Index No.

COAL MINE OPERATOR



(Sheets) **COAL PRODUCTION** (Sheet)

Period						Tons		
Mo.	Day	Year	Mo.	Day	Year			
					1952			7 815
					1953			21 087
					1954			19 780
					1955			39 840
					1956			477
			Local		1957			14 449
			Local		1958			27 050
					1959			18 732
					1960			14 054
					1961			14 914
					abn 4/61			

SUMMARIES

No. to No.

Railroad, Wagon, Strip, Idle, Abandoned

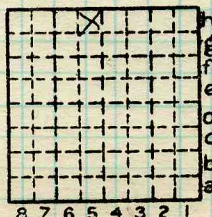
IDENTIFICATION

County No. _____ Coal No. _____

Coal Report No. 5-62

Quad. _____

County VERMILION



Sec. 17

T. 19 N. S.

R. 11 E. W.

Index No.

COAL MINE—PRODUCTION

ILLINOIS GEOLOGICAL SURVEY, URBANA



