



Actina local mine

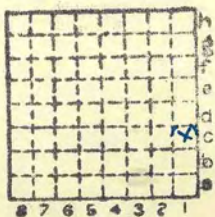
see section
23 C8.

Pioneer 17C.

L 26.

mi. #647

7
422



Sec. 22.

T.	9	X
R.	7	X

Index No.

Mine originally operated by: (1)



Rocky Branch Coal Co.

Date

1936

(1932)

Original name or number:

Illinois Coal Report 1936 p.

LATER OPERATORS

Date

Operator

Name or No.

2 1938

Jones & Gill

3 1939

Rocky Branch Mine #1

4 1952

Pioneer Mining Co.,

1

6

7

8

9

10

11

12

13

14

1939 Sec 23
957E

*Also owners

#See ownership sheet

Railroad, Wagon, Strip, Idle, Abandoned

Slope Mine

IDENTIFICATION

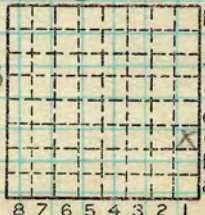
County No. 772

Coal No. 5

Coal Report No. L-26

Quad. Equality

County saline



Sec. 22

T. 9 S.

R. 7 E.

Index No. 0722 c8

COAL MINE OPERATOR

Period				Tons			
Mo.	Day	Year	Mo.	Day	Year		
						Idle	
		1951				1 145	
		1952				23 000	
		1953				7 010	
		1954				11 279	
		1955					

SUMMARIES		
No.	to	No.

Railroad, Wagon, Strip, Idle, Abandoned

Slope Mine

Sec. 22

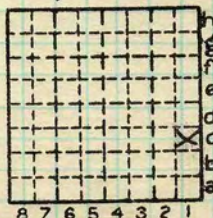
IDENTIFICATION

County No. 772 Coal No.

Coal Report No. L-26

Quad. Equality

County Saline



T. 9 S. X

R. 7 E. X

Index No.

COAL MINE—PRODUCTION

ILLINOIS GEOLOGICAL SURVEY, URBANA



NE SE SE 22-9S-7E

Pioneer Coal Co.

5th room

June 30, 1954

Descr. by HBS

Rec. by MEH

Detail Description of No. 5 Coal
No sample taken

4'3" Total thk.

Immed. Roof Blk. shaly shale ("slate")
w/ sev. large concretions

0" - ~~1/8"~~
Coal, n.b.b., w/ pyr. & calcite on vert. facings
& calcite replacing bright bands
up to 1/4" thick, ~~1/4"~~

11 - 11 1/4 Pyrite band

11 1/4 - 30 Coal NBB, w/ pyrite & calcite on vert.
facings & calcite replacing bright
bands up to 1/4" thick

30 - 30 1/8 Fusain

30 1/8 - 31 1/8 Coal, nbb, w/ pyr. on vert. facings

31 1/8 - 31 1/4 Fusain

32 - 35 Coal, nbb. w/ pyr. & some calcite on
vert. facings

35 - 35 1/8 Fusain

35 - 38 1/8 Coal, nbb, w/ pyr. & cal. on vert. facings

38 1/8 - 38 5/8 Fusain & Dull Coal

38 5/8 - 40 1/8 Coal, nbb, w/ calcite on vert. facings

40 1/8 - 40 1/4 Fusain

40 1/4 - 41 3/4 Coal, nbb. w/ cal. on vert facings



Pioneer Coal Co. - page 2

- 41³/₄ - 41⁷/₈ Fusain
- 41⁷/₈ - 43 Coal, nb b., w/ cal. on vert. facings
- 43 - 43¹/₄ Fusain
- 43¹/₄ - 51 Coal, nb b., w/ cal. on vert. facings

Bottom is Ucl., med. gy., stigm., slicks,
vy. hard

INDEX

Rocky Branch Coal Co. - operated by Lee
Jones and Homer Gill of Galatia.

Coal undercut in "grey-jack". Steam
powered generating plant. Production runs 50 T
on an active working day. Slope - 30'-35' to coal.

CCB 10/19/38

Collector CCB & GWL

Mine Rocky Branch Co. Seline

X.—EXTRA SHEET NO.

Coal: Survey No. 772

Index No. 0723-28

Operator, ^{Lee} Jones and ^{Homer} Gill, of Galatia Date 10-17-38
 Mine, Rocky Branch Coal Co. Sec. 23 T. 9S R. 7E
 Location in mine, On 1st East off main North - opposite neck of
 where #1 Room is to be

GRAPHIC SECTION		DESCRIPTION OF SECTION (AT POINT SAMPLED)		
In.	No.	No.	(Note character and thickness of roof)	Inches
			Black slate roof	
		5	Shale and bony	5"
		4	Coal	9"
		3	Calcite and pyrite band	1"
		2	Coal	32"
		1	"Grey-jack" - considerable quantities of calcite in the coal. This material is gobbled	9"
5"	5		Fire clay floor	
9"	4			
1"	3			
			(Note character and thickness of floor)	
			Total thickness of coal	
32"	2			
			Condition, Fresh Time, hr. 20 min.	
			Wt. Gross, 33 1/2 lbs. Net, 24 1/2 lbs.	
			What Nos. shipped by Co.?	
			Excluded from sample: No. 1, 3, 5	
9"	1		Sample represents 41 in. tons.	
			Impurities? How do they occur?	
(1 division = 3 in.)				

Sample No. A Can No. A-608 Lab. No.

Collector, CCB & GWL

Mine, Rocky Branch Co. Salina

R. COAL SAMPLE SHEET.

Coal: Survey No.

Index No. 772

0723. C8

Operator, ^{Lee} Jones & Homer Gill, of Galatia Date 10-17-38
 Mine, Rocky Branch Coal Co. Sec. 23 T. 9S R. 7E
 Location in mine, On 1st East off main North - #3 room neck

GRAPHIC SECTION		DESCRIPTION OF SECTION (AT POINT SAMPLED)		
In.	No.	No.	(Note character and thickness of roof)	Inches
			Good black slate roof	
		3	"Coal"	40"
		2	"Gray-jack" - undercutting machine cuts here	4"
		1	"Gray-jack" - considerable quantities of calcite. Grogged	5"
			Fire clay floor	
			(Note character and thickness of floor)	
			Total thickness of coal	
			Condition, Fresh Time, hr. 20 min.	
			Wt. Gross, 52 1/2 lbs. Net, 43 1/2 lbs.	
			What Nos. shipped by Co.?	
			Excluded from sample: No. 1, 2	
			Sample represents 40 in. tons.	
			Impurities? How do they occur?	

(1 division = 3 in.)

Sample No. B Can No. A-603 Lab. No.

Collector, CCB & GWL

Coal: Survey No. 772

Mine, Rocky Branch Co. Saline

Index No. 0723.08

Operator, Lee Jones and Homer Gill, of Galatia Date 10-17-38
 Mine, Rocky Branch Coal Co. Sec. 23 T. 9S R. 7E
 Location in mine, On 1st East off main North - #2 room neck

GRAPHIC SECTION		DESCRIPTION OF SECTION (AT POINT SAMPLED)		
In.	No.	No.	(Note character and thickness of roof)	Inches
			Good black slate roof	
		5	Slate	8"
		4	Coal	6 3/4"
		3	Small dirty streak	1/4"
		2	Coal	30"
		1	"Gregg-jack" - considerable quantities of calcite. Grabbed	5"
8"	5		Fire clay floor	
6 3/4"	4			
1/4"	3			
30"	2		(Note character and thickness of floor) Total thickness of coal	
5"	1			
(1 division = 3 in.)		Condition, Fresh Time, hr. 20 min. Wt. Gross, 48 1/2 lbs. Net, 39 1/2 lbs. What Nos. shipped by Co? Excluded from sample: No. 1, 5 Sample represents 37" in. tons. Impurities? How do they occur?		

Sample No. C Can No. A-610 Lab. No.

Collector, CCB & GWL

Coal: Survey No. 772

Mine, Rocky Branch Co. Saline

Index No.

R. COAL SAMPLE SHEET.

0723.08