

Drill hole at Hoisting Shaft site has 6th 2002
 Log in Files. It gives coal data.

Location of Hoisting Shaft

600' E } SW₂ SW NW 10-85-2E
 20' N }

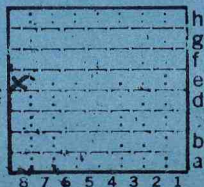
FREEMAN C. & MNG. CORP.

~~Freebuan Mng. Co.~~

Mi. #689

1670

S-93



Sec. 10

T. 8 N.
 E.
 R. 2 E.
 W.

Index No.

E8



Mine originally operated by: (1)

Date
10/1/48

Freeburn Mining Co.

Original name or number: Station 2637
Illinois Coal Report p.

Freeman Span
Ill.

LATER OPERATORS

Date Operator Name or No.

2 FREEMAN C. MNG. CORP. 1955 # 3

3 being abandoned 9/29/55.
J.O., 1956

4

5

6

7

8

9

10

11

12

13

14

Sec. 10 T8S R2E

2010' N 600' E of SW corner of SW NW (1948) (1959)

*Also owners

#See ownership sheet

Railroad, Wagon, Strip, Idle, Abandoned

SHAFT

IDENTIFICATION

County No.

1670

Coal No.

6

Coal Report No.

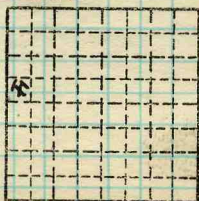
S-93

Quad.

(1948) 8'6"

County

Williamson



Sec. 10

T. 8 N. S.

R. 2 E. W.

Index No.

COAL MINE OPERATOR



(Sheets) COAL PRODUCTION (Sheet)

Period				Tons	
Mo.	Day	Year	Mo.	Day	Year
Oct			Dec	1948	
				1949	
				50	8 280
				51	215 800
				52	795 838
				53	1 088 664
				1954	1 062 550
				1955	724 991
				Sept. 1955	830 045
					779 620
					54 705 708

Abnd. 1955

SUMMARIES

No. to No.

Railroad, Wagon, Strip, Idle, Abandoned

IDENTIFICATION

County No. 1670

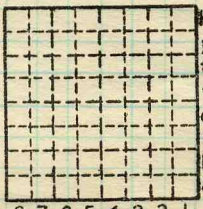
Coal No.

Coal Report No. S-93



Quad.

County Williamson



Sec. 10

T. 8 N.
R. 2 E.
W.

Index No.

COAL MINE-PRODUCTION

ILLINOIS GEOLOGICAL SURVEY, URBANA