



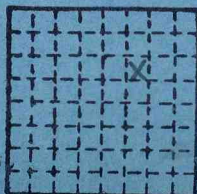
Form 180 Blue

Location sheet filed

SAXTON C. CORP.,
New Castle #2

COUNTY No. 1421

S-50



Sec. 20
 T. 10 N.
 R. 5 E.
 Index No. W.



Mine originally operated by: (1)

SAXTON COAL CORP.
CARRIER MILLS

Date **1953 (Coal Report)**

Original name or number: **NEW CASTLE**
Illinois Coal Report p.

LATER OPERATORS

Date	Operator	Name or No.
2 1954	"	"New Castle" 2
3		
4		
5		
6		
7		
8		
9		
10		
11		
12		
13		
14		

*Also owners

#See ownership sheet

Railroad, Wagon, Strip, Idle, Abandoned **1954**

IDENTIFICATION

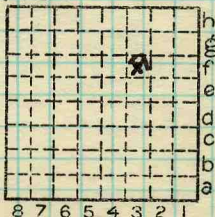
County No. **1421**

Coal No.

Coal Report No. **S-50**

Quad.

County **SALINE**



Sec. **20**

T. **10^{N.}** S.

R. **5** E. W.

Index No.

COAL MINE OPERATOR



(Sheets) COAL PRODUCTION (Sheet)

Period						Tons				
Mo.	Day	Year	Mo.	Day	Year					
					1953	54	232			
					1954	122	561			
					1955	145	315			
					idle after August 1956	124	116			

SUMMARIES

No.	to	No.				
			446	224		

Railroad, Wagon, Strip, Idle, Abandoned 1956

Sec. 20

IDENTIFICATION

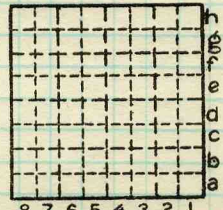
County No. 1421

Coal No.

Coal Report No. S-50

Quad.

County Saline



T. 10 S. X
 R. 5 E. W
 Index No.

COAL MINE—PRODUCTION

ILLINOIS GEOLOGICAL SURVEY, URBANA

5 ft.+ Shale, gray, well laminated, fairly soft, with a 1" brown argillaceous limestone band 44" from bottom. Scattered limestone nodules up to 2" across. Shale becomes dark gray 26" from bottom

3" Shale, black, hard, massive

40½"
3¼½" Davis coal

0-½" Coal, normally banded & bright, soft, breaks easily into small pieces

½"-19½" Coal, normally banded & bright, with pyrite on vertical joint faces, little kaolinite

19½"-23" Coal, normally banded & bright, with more pyrite & little kaolinite on vertical face, pyrite up to 1/16" wide

23"-28½" Coal, normally banded & bright, with little pyrite & kaolinite on vertical face

28½"-30½" Coal with a 1/8" shale lense, 2" long, at 28½"

Saxton Coal Corporation

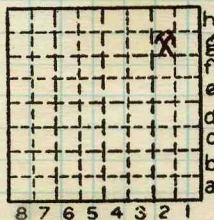
Sample #1

100' N. of S. end of E. pit

By MEO & HBS Date 6-9-54

Quad 273 Part

County Saline



21
20
Sec. 10
T. 5
R. 5
E.
Index No.

30 $\frac{1}{2}$ "-30 $\frac{5}{8}$ " Fusain

30 $\frac{5}{8}$ "-33 $\frac{1}{2}$ " Coal, normally banded & bright

33 $\frac{1}{2}$ " - 33 $\frac{3}{4}$ " Fusain

33 $\frac{3}{4}$ "-end Coal, normally banded & bright

3" + Underclay, medium gray, stigmarian

Coal appears fairly massive, as a whole.

N.B. All pyrite over $\frac{1}{8}$ " excluded.

- 10' + Shale, medium gray, medium-well laminated, sparingly fossiliferous (pelecypods), hard
- 2'2" Shale, medium to dark gray, medium to well laminated, hard
- 2" Shale, dark, very carbonaceous, pyritic, soft, not laminated & poorly indurated
- 3'5" Davis coal
 0-1/8" Coal, argillaceous, pyritic, flaky, moderately brittle
- 1/8"-6" Coal, normally banded & bright, pyrite on vertical faces, some horizontal, up to 1/32" thick
- 6"-6 1/2" Fusain
- 6 1/2"-11 1/2" Coal, normally banded & bright, pyrite on vertical facings up to 1/16" thick
- 11 1/2"-11 3/4" Fusain
- 11 3/4"-19 1/4" Coal, normally banded & bright, gray on vertical facings up to 1/32" but

Saxton Coal Corporation

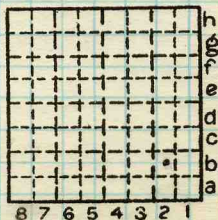
Sample #2

100' from E. end of E. pit

By MEO & HBS Date 6-10-54

Quad. 273 Part _____

County Saline



Sec. 16

T. 10 S.

R. 5 E.

Index No.

more than above

19 $\frac{1}{4}$ "-21 $\frac{1}{4}$ " Pyritic clay nodule 8 $\frac{1}{2}$ " long on one side of face - excluded

21 $\frac{1}{4}$ "-23 $\frac{3}{4}$ " Coal, normally banded & bright, with fine pyrite on vertical facings

23 $\frac{3}{4}$ "-23 $\frac{7}{8}$ " Fussin

23 $\frac{7}{8}$ "-41" Coal, normally banded & bright, with a little very fine pyrite on vertical facings

6" + Underclay, medium to light gray, stigmarian, pyritic, silty, hard

- 10' + Shale, light medium gray, hard, moderately well laminated
- 3'6" Shale, dark, moderately hard, moderately well laminated
- 1½" Shale, very dark gray, soft, loosely bedded
- 1" Shale, medium to dark gray, very carbonaceous, pyritic, no apparent bedding
- 3'5¼" Davis coal
 0-8" Coal, normally banded & bright, fine pyrite on vertical facings
- 8"-9½" Fusain, pyritic
- 9½"-10¼" Coal, normally banded & bright, much thin pyrite on vertical facings
- 10¼"-10 ¾" Fusain
- 10 ¾"-14" Coal, normally banded & bright, pyrite on vertical facings
- 14"-14½" Fusain

Saxton Coal Corporation

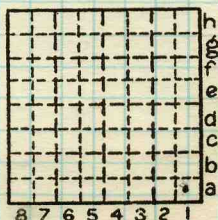
Sample #3

500' W. of Sample #2

By MEO & HBS Date 6-10-54

Quad. 273 Part _____

County Saline



Sec. 16

T. 10 N. S.

R. 5 E.

Index No.

14 $\frac{1}{4}$ "-15" Coal, normally banded & bright, pyrite on vertical facings

15"-15 $\frac{1}{4}$ " Fusain

15 $\frac{1}{4}$ "-18 $\frac{1}{2}$ " Coal, normally banded & bright, with a very little pyrite on vertical facings

18 $\frac{1}{2}$ "-18 $\frac{3}{4}$ " Fusain

18 $\frac{3}{4}$ "-21" Coal, normally banded & bright, a little pyrite on vertical facings

21"-22 $\frac{1}{4}$ " Fusain

22 $\frac{1}{4}$ "-25 $\frac{3}{4}$ " Coal, normally banded & bright, a little pyrite on vertical facings

25 $\frac{3}{4}$ "-26" Fusain

26"-41 $\frac{1}{4}$ " Coal, normally banded & bright, a little pyrite on vertical facings, with pyritic light gray shale nodules up to $\frac{1}{2}$ " thick & 4" long at 28" & 31"

(N.B. Shale nodules excluded & all pyrite over $\frac{1}{8}$ ")

6" + Underclay, medium gray, silty, pyritic, stigmarian very hard.

- 15' Overburden
- 15' Siltstone, medium-fine grained, light gray-brown, fairly micaceous, thinly bedded, broken, fairly hard, with kaolin on some bedding planes. Grades into
- 4" Clay shale, light buff gray, soft, faint traces of laminations
- 3" Clay, yellow, patchy orange-brown, soft, yellow portion comparatively plastic, orange-brown is limonitic
- 3'3 $\frac{1}{2}$ " Dekoven coal (very well jointed)
 0"-1" Coal, soft, weathered, banded
 1"-1 1/8" Shale, soft, yellow-brown, probably original pyritic
 1 1/8"-2" Coal, weathered but slightly harder than above, banded
 2" Weathered fusain

Above excluded from sample

Saxton Coal Corporation

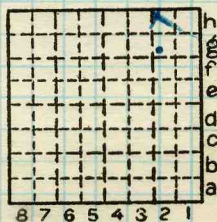
Sample #4

S. end of E. pit

By HBS & MEO Date 8/17/54

Quad. 273 Part _____

County Saline



Sec. 21
 T. 10^{N.} S.
 E.
 R. 5 W.
 Index No.

3"- 7 7/8" Coal, normally banded and bright with a few thin (1/16") fusain bands, limonite staining on vertical facings

7 7/8"-8" Fusain

8"-36 1/4" Coal, normally banded and bright, with few thin (1/16") fusain bands, limonite staining on vertical facings

36 1/4"-36 5/8" Fusain

36 5/8"-39 1/2" Coal, normally banded and bright

- 10' Overburden
- 30' Siltstone, fine-medium grained, medium gray, fairly micaceous, irregularly bedded, sparsely jointed, hard, grades into
- 7" Shale, medium dark gray, soft, poorly laminated, grades into
- 1 1/2" Clay shale, soft, dark gray, poorly laminated
- 3' 0 1/2" Dekoven coal
 Detail description of coal (well jointed)
 0-18" Coal, normally banded and bright, with a 1/16" pyritic fusain band at 2", 1/16" non-mineralised fusain, banded at 2 3/4", 4 1/2" and 7 1/4". A pyritic clay nodule from 13" to 13 1/2"
 18"-18 1/4" Shale, medium gray, soft, poorly laminated
 18 1/4"-20 3/4" Coal, normally banded and bright
 20 3/4"-23 1/4" Clay, green-gray, hard, pyritic, excluded from example
 23 1/4"-36 1/2" Coal, normally banded and bright
- 6"+ Underclay, medium gray, fairly laminated, soft, fairly micaceous, stigmarian, fairly hard.

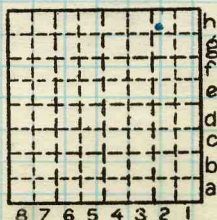
Saxton Coal Corporation

Sample #5

150 Yds. N. of Sample #4
 By HBS & MEO Date 8/19/54

Quad. 273 Part

County Saline



Sec. 21
 T. 10 S.
 R. E.
 Index No.

21 1/2"-37" Coal normally banded and bright with several thin fusain bands.

6'† Underclay, soft when wet, medium gray, poorly laminated, stigmarina, slightly micaceous, slightly silty.

Saxton Coal Corporation

Sample #5

Page 2

- 20' Overburden
- 15' Siltstone, medium gray, soft, fairly well laminated, some limonite staining on laminations.
- 8" Shale, medium-dark gray, soft, moist, somewhat carbonaceous, clayey character, fairly well laminated.
- 3'1" Dekoven Coal, very well jointed
Detailed description of coal.
- 0-2 1/2" Coal, normally banded and bright
- 2 1/2-2 3/4" Fusain
- 2 3/4-18" Coal normally banded and bright, some pyrite on Vertical facings fusain bands 1/16 @ 1/2", 3-1/4", 5-1/2", and 6-1/4 from top of unit.
- 18-18 1/2" Fusain
- 18 1/2-21" Coal, normally banded and bright
- 21-21 1/2" Fusain

Saxton Coal Corporation

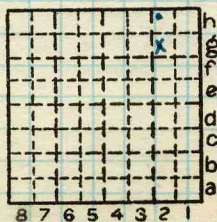
Sample #6

150 yds N. of Sample #5

By MEO Date 8/19/54

Quad 273 Part _____

County Saline



Sec. 21
T. 10 N.
S. E.
R. 5 E.
W.
Index No.

- 20' Overburden
- 10' Sandstone, light-medium gray, fine grained, slightly micaceous, faintly laminated, soft, limonite stained on lamination
- 4' Shale, arenaceous, medium-dark gray, slightly micaceous, marine fossils, soft, fairly well laminated.
- 10½" Shale, medium-dark gray, numerous tyritic fossils, very characteristic and abundant, coaly streaks up to ¼", soft clayey fossils on laminations in general, moderately well laminated.
- 3'2" DeKoven Coal, well jointed
Detailed description:
Normally banded and bright
- 6"r Underclay, very sandy, medium-dark gray, coaly streaks, stigmarian, soft, moderately laminated, micaceous on laminations.

Saxton Coal Corporation

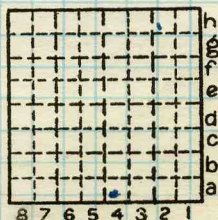
Sample #7

Middle of N. Highwall

By M E O Date 8/19/54

Quad. 273 Part _____

County Saline



Sec. 16
T. 16 N.
S.
R. 5 E.
W.
Index No.

Sutton Coal. Corp. Sample #1

100' N of S end of ^F pit.

5ft + sh, gry, well low, fly soft, w. a 1" brn
cngl fls band. 44" from bottom. Seat. ls. nodds.
X ~~red~~ up to 2" across. Sh. secs. ds. gry 26"
from bottom.

3" sh, bk, hd, massive

40 1/2" Davis coal,

3' 4 1/2"

0-1/2" Coal, nbb, soft brks. esp. into sm. sec.
1/2"-19 1/2" Coal, nbb, w. py. on vert. pt. fcs., ltl brk
19 1/2"-23" Coal, nbb, w. some py. & ltl brk on ~~vert~~ ^{face} vert. fc.

py. up to 1/16" wide.

23"-28 1/2" Coal nbb, w. ltl. py. & brk. on vert. fc.

28 1/2"-30 1/2" Coal w. a 1/8" sh. lensae, 2" long, at 28 1/2".

30 1/2"-30 5/8" Tussan.

30 5/8"-33 1/2" Coal, nbb.

33 1/2"-33 3/4" Tussan

33 3/4"-end Coal, nbb.

3" + Underslay; med-stk. gry, stig

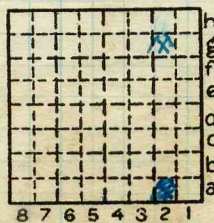
Coal appears fly massive, as a whole.

N.B. all py. over 1/8" excluded.

By MEO & HBS Date 6/9/54

Quad. 273 Part

County Saline



Sec. 21
T. 10 N.
R. 5 S.
Index No.

Sexton. Coal. Corp

Sample # 2. 100' from E end of E pit

10'± Sh, med gy med - well laminated, sparingly fossiliferous (pelecypods), hd.

2'2" Sh med-dk gy. med - well laminated, hard

2" Sh, dk, v carb, pytic, soft, not laminated & poorly indurated.

3'5" ~~est~~ 1/8" Davis Coal
0-1/8" Coal, argil, pytic, flaky, mod brittle.

1/2" - 6" Coal. NBB, py on vert faces, some horiz, up to 1/32" thick

6" - 6 1/2" Fossam

6 1/2" - 11 1/2" Coal NBB, py. on vert faces up to 1/16" thick.

11 1/2" - 11 3/4" Fossam.

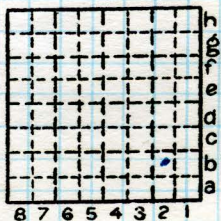
11 3/4" - 19 1/4" Coal, NBB, gy. on vert faces up to 1/32" ⁺ thk. more than above.

19 1/4" - 21 1/4" Pytic clay of pytic nod. 5 1/2" long on one side of face - excluded

By ME O. HRS. Date 8/6/1954

Quad. 273 Part

County Saline



Sec. 16
T. 10 N.
R. 5 E.
Index No.

② Sample 2"

21 $\frac{1}{4}$ - 23 $\frac{3}{4}$ Coal. NBB with fine py. on.
west facings

23 $\frac{3}{4}$ - 23 $\frac{7}{8}$ Fusain

23 $\frac{7}{8}$ - 41 Coal. NBB with a little v. fine
py. on. west. facings

6" + Vel. ^{mod} br. gy. st. g. pyric, sty, hd.

Sexton Coal Corp.

Sample #3 500' W. of sample #2.

- 10'± sh, lt. med gy, hd, mod well lamined.
- 3'6" sh, dk, mod hd, ~~mod~~ mod well lamined.
- 1½" sh, ~~lt~~ v. dk. sy, soft, loosely bedded,
- 1" sh, med-dk sy, v. carb, pytic, no apparent bedding

3' 5¼" Davis Coal.

0-8" Coal NBB, fine py. on vert facings

8"-9½" Fusain, pytic

9½"-10¼" Coal. NBB, mod. thin py. on vert. facings

10¼" - 10¾" Fusain

10¾" - 14" Coal NBB, py. on vert. facings

14" - 14¼" Fusain

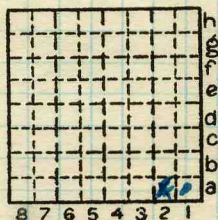
14¼" - 15" Coal NBB py. on vert facings

15" - 15¼" Fusain

By HEO & HBS Date 6/10/54

Quad 273 Part

County Saline



Sec. 16
 T. 10 N.
 R. 5 E.
 Index No.

Sample # 3 (2)

15 $\frac{1}{4}$ - 18 $\frac{1}{2}$ Coal. NBB with a very little
pyt. on west face

18 $\frac{1}{2}$ - 18 $\frac{3}{4}$ Fusain

21 $\frac{3}{4}$ - 21 Coal NBB, a little
pyt. on west. face

21 - 22 $\frac{1}{4}$ Fusain

22 $\frac{1}{4}$ - 25 $\frac{3}{4}$ Coal NBB, a little
pyt on west. face

25 $\frac{3}{4}$ - 26 Fusain

26 - 41 $\frac{1}{4}$ Coal, NBB, a little pyt. on
west. face, w/ pytic ls. gy
sh nodes up to 1 $\frac{1}{2}$ " thick &
4" long @ 28" & 31"

~~26~~ [NB sh. nodes excl. ^{nod} & all pyt.]
oval $\frac{1}{8}$ "

6" + Ocl, med gy, sty, pytic, stg, v. hd.

x

Saxton Cl.
S end of E pit.

Sample #4

15' Overburden.

15' S, med/fin grnd, Lt. gray-brn, faly mic,
thinly bed, broken, faly bed, w/
bealin on some bedding planes.
Deser. rtd.

4" Cl^{sh} Lt buff gr, soft, faint traces of lons.

3" d, ylw, yesth orange, ^{brn} soft ylw parton
Comparatively plastic; oaty - brn & lin.

39 1/2" Recover coal. (very well jointed)

- 0"-1" Coal, soft wea, ~~sh~~ bedd
- 1"-1 1/8" sh, soft, ylw-brn, prob orig pyric.
- 1 1/8"-2" Coal, wea but stly harder than above,
bedd
- 2"-3" Wea fusain ~~brn~~

Above excluded from sample.

3"-~~8 1/2~~ 7 3/8" Coal, nbb, w/ a few thin (1/16")
fusain beds, lin strong on vert facing

7 3/8"-8" Fusain

8"-36 1/4" Coal, nbb, w/ few thin (1/16") fusain
beds, lin strong on vert facing

36 1/4"-36 5/8" Fusain

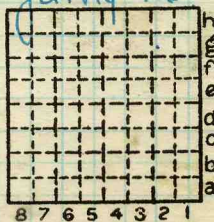
36 5/8"-39 1/2" Coal, nbb.

6"+ Ucl, med/dk grn-gray, stly, very faly & abn latly
mic, lam (faily), stly, ^{fairly} bed

By HBS & MEO Date 8/17/54

Quad. 243 Part

County Saline



Sec. 21
T. 10 S.
R. 5 W.
Index No.

Boston CC
150 yds N of sample #4

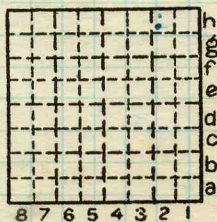
Sample #5

- 10' Overburden
- 30' Sh, fm / med gr, med gy, fully mic, irreg
bed, sparsely jointed, hard; Grades into
- 7" Sh, med dk gy, soft, poorly lam; Grades into
- 1 1/2" cl sh, soft, dark gy, poorly lam.
- 36 1/2" DeKoven coal
detail descrip of coal. (well jointed)
~~Coal nbb~~
- 0"-18" Coal, nbb, mi a 1/2" pyr. frag
bed 2" 1/2" non-union frag
bed at 2 3/4", 4 1/2" & 7 1/4" A pyr
cl nod from 13" to 13 1/2"
- 18"-18 1/4" Sh, med gy, soft, poorly lam.
- 18 1/4"-20 3/4" Coal, nbb.
- 20 3/4"-23 1/4" cl, gen. gy, hd. pyr, included
from sample.
- 23 1/4"-36 1/2" Coal, nbb.
- 6"+ Ucl, med gy, faintly lam, soft, fully mic,
stg., fairly ht.

By HBS + MEO Date 8/19/54

Quad. 243 Part _____

County Saline

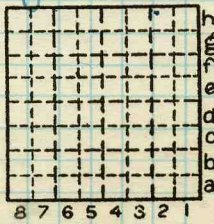


Sec. 21
N. _____
T. 10 S.
E. _____
R. 5 W.
Index No.

Sexton CC. Sample # 6
 150 yds N of Sample # 5

- 20' Overburden.
- 15' sts, med gr, soft, fairly well laminated, some lim staining on beds
- 8" sh, med-dk gy, soft, moist, somewhat calc, clayey character, fairly well laminated.
- 3' 1" Dekoven Coal very well jointed
 Detailed desc. of coal.
- 0-2 1/2' Coal NBB
- 2 1/2-2 3/4 Fusain
- 2 3/4-18 Coal NBB, some pyr. on brit. facings
 fus bands 1/16 @ 1/2", 3 1/4", 5 1/2" ± 1/4 from top of unit.
- 18-18 1/2 Fusain
- 18 1/2-21 Coal NBB
- 21-21 1/2 Fusain
- 21 1/2-37 Coal NBB w/several thin fusain bands
- 6" + Vel soft when wet, med gr, poorly laminated, stig, slightly mic, slightly silty.

By PEO Date 8/19/54
 Quad 273 Part _____
 County Saline



Sec. 21
 T. 10 S.
 R. 5 E.
 Index No.



Sexton CC. Sample # 7.
middle of N. Highwall.

20' Overburden.

10' ss, lt-med gy, ^{in sand} faintly laminated, soft, ^{thin} streak on laminae, slightly mic.

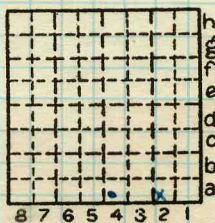
4' sh arenaceous, med-dk gy, slightly mic, mar. fossils, soft, fairly well laminated

10 1/2" sh, sh med-dk gy, num pyrit. foss., v. characteristic & abundant, ^{coaly} streaks up to 1/4" soft & clayey, fossils on laminae in general, mod-well laminated

3' 2" DeKoven Coal, well jointed
Detailed description
NBB

6" Vel. v. sandy, ~~sh~~ med-dk gy, coaly streaks, stig., soft, mod laminated, mic on laminae

By LEO Date 8/19/54
Quad. 273 Part _____
County Saline



Sec. 16
T. 16
R. 5
Index No.