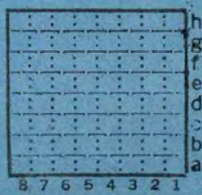


location estimated
 from mineral - out area
 map - loc. of town of
 Salisbury.
 see Mc Bee.
 J.O., 1957

Whitehurst



Sec. 17 N. 2
 T. S.
 R. 6 W.
 Index No.

✓



Mine originally operated by: (1)

*Gordon & Duncan
Salisbury.*

Date *1899.*

Original name or number:

Illinois Coal Report

p.

LATER OPERATORS

Date

Operator

Name or No.

2 *1900. John P. Gordon.*

3 *1905 W. U. Whitehurst.*

4
:

5

6

7

8

9

10

11

12

13

14

* Also owners

See ownership sheet

Railroad, Wagon, Idle, Abandoned

IDENTIFICATION

County No.

Coal No.

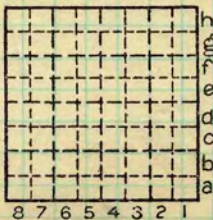


Quad.

Part

County

Sangamon.



Sec.

T. *17* N. S.

R. *6* E. W.

Index No.

COAL MINE OPERATOR



Mine originally operated by: (1)

*N.C. Antle
Salisbury*

Date *1895.*

Original name or number:
Illinois Coal Report p.

LATER OPERATORS

Date	Operator	Name or No.
2		
3		
4		
5		
6		
7		
8		
9		
10		
11		
12		
13		
14		

* Also owners # See ownership sheet

Railroad, Wagon, Idle, Abandoned

IDENTIFICATION

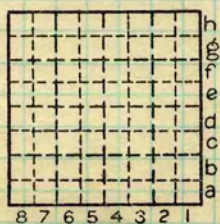
County No.

Coal No.

Quad.

Part

County *Sangamon.*



Sec. *17* N. S. E. W.
 T. *6* R. Index No.

COAL MINE OPERATOR



Mine originally operated by: (1) *W. H. Golloddy & Brandt.*
 Date *1894.* *Salisbury.*

Original name or number:
 Illinois Coal Report p.

LATER OPERATORS

Date	Operator	Name or No.
2		
3		
4		
5		
6		
7		
8		
9		
10		
11		
12		
13		
14		

* Also owners # See ownership sheet

Railroad, Wagon, Idle, Abandoned

IDENTIFICATION

County No.

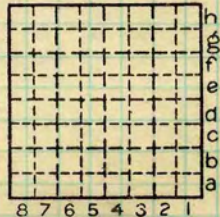
Coal No.

Quad.

Part

County

Sangamon.



Sec.

T. *17* N. S.

R. *6* E. W.

Index No.

COAL MINE OPERATOR