



Mine originally operated by: (1)

Date

1950

RED TOP COAL CO., DANVILLE, ILL.

Original name or number:

Illinois Coal Report 1950 p. 60

LATER OPERATORS

Date	Operator	Name or No.
2		
3		
4		
5		
6		
7		
8		
9		
10		
11		
12		
13		
14		

*Also owners

#See ownership sheet

Railroad, Wagon, Strip, Idle, Abandoned

IDENTIFICATION

1951

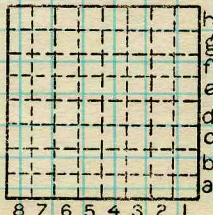
County No. _____

Coal No.

Coal Report No. L-230

Quad.

County VERMILION



Sec.

T.

R.

Index No.

N.
S.

E.
W.

COAL MINE OPERATOR



(Sheets) COAL PRODUCTION (Sheet)

Period						Tons			
Mo.	Day	Year	Mo.	Day	Year				
					1950	1900			

SUMMARIES

No.	to	No.				

Railroad, Wagon, Strip, Idle, ~~Abandoned~~

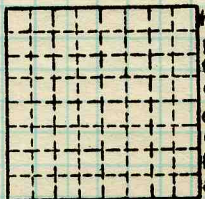
IDENTIFICATION

County No. _____ Coal No. 1951

Coal Report No. L-230

Quad.

County Vermilion



Sec.

T. N.
S. S.
E. E.
R. W.
Index No.

COAL MINE—PRODUCTION

ILLINOIS GEOLOGICAL SURVEY, URBANA