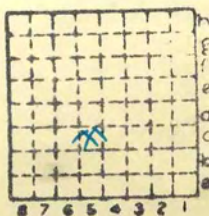


Reabody 54.

Mine Index # 75

15



Sec. 15

T. 13 N.

R. 6 W.

Index No.



Mine originally operated by: (1) *Black Diamond C. Co.*  
 Date *1905* *Auburn.*

Original name or number:  
 Illinois Coal Report \_\_\_\_\_ p. \_\_\_\_\_

LATER OPERATORS

Date	Operator	Name or No.
2	1916. Springfield District Coal Co.	4.
3	1924 Peabody	54.
4	1924 Idle	
5	:	
6		
7		
8		
9		
10		
11		
12		
13		
14		

*Map next page*

\* Also owners # See ownership sheet

Railroad, Wagon, Idle, Abandoned *clint 1431*  
**SHIPPING MINE IDENTIFICATION**

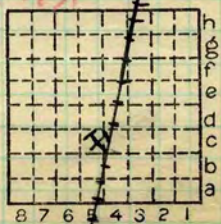
County No. *15*

Coal No.  *6*

Quad. *1737*

Part *9.*

County *Sangamon.*



Sec. *15*  
 T. *13* N.  
 R. *6* W.  
 Index No.

*2515*

COAL MINE OPERATOR





Location and Elevation Data

Location: Exact ~~Approximate~~  
(Approximate only if no trace or record of original exists)

Location by W. B. Roe  
Date 4-27-31 Notebook No. 602 Page 15-117

Looseleaf ref. \_\_\_\_\_  
Map files No. 12-83-106

Description of location

Position in sec., 1/4 sec., 40 acres

\_\_\_\_\_ feet from North line  
2750 feet from East line  
1750 feet from South line  
\_\_\_\_\_ feet from West line



Sec. 15  
T. 13 N.  
R. 6 W.

Other description: \_\_\_\_\_  
Farm \_\_\_\_\_  
No. \_\_\_\_\_  
Company Peabody Coal Co  
No. (Bk. Diam) 54  
County No. 15

M 11/19/32  
7' coal at 301'  
Elev. top 337'

Elevation 638.3 ft.

By W. B. Roe

Method: Level, transit, alidade, hand level

Elevation of Alidade  
Rail

Height of point above ground 0

Date 4-27-31 Notebook 602 P. 15-117

Looseleaf ref. \_\_\_\_\_

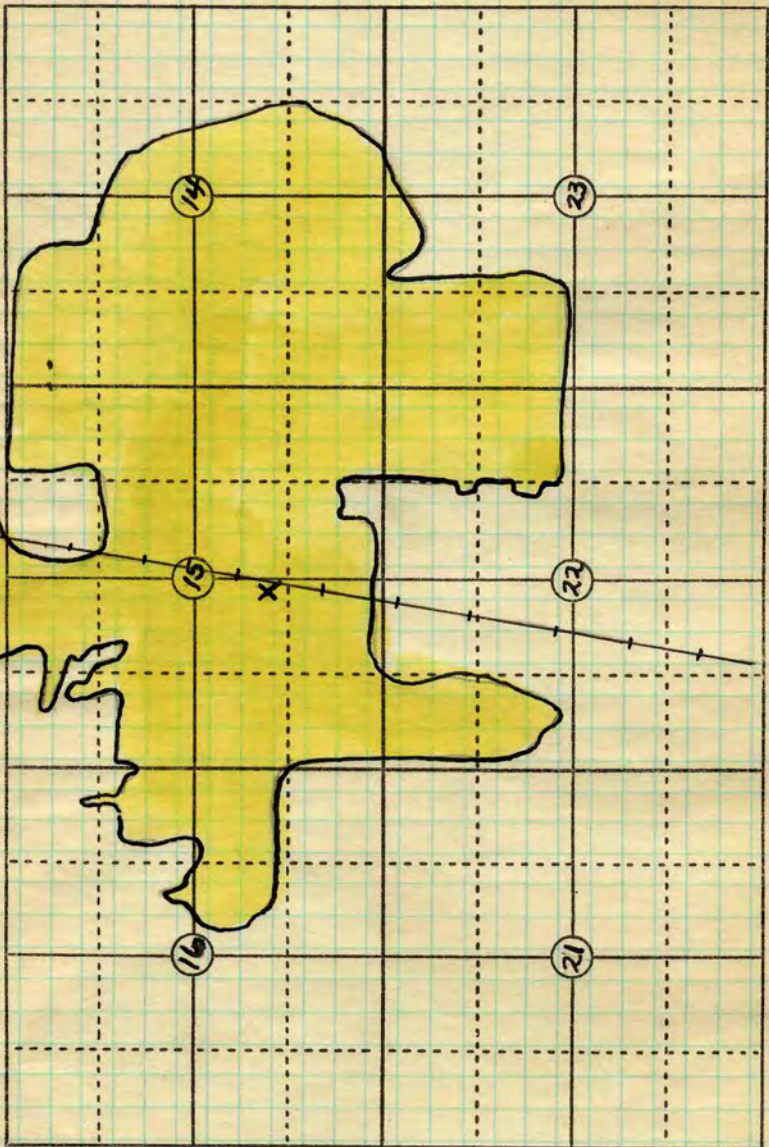
ABANDONED

Map files No. 12-83-106

Description of item: (drill hole, mine, etc.) Mine shaft (100')

Rail to rail 303 C#6 7'0" **SHIPPING MINE**

County Saugamon Quadrangle Duvernoy Index No. 2515



R.G.W.

T 13 Z

Map 1933

Date

Operator

Name or No.

#10

County Sangamon

Peabody

Index No.

54.

2515



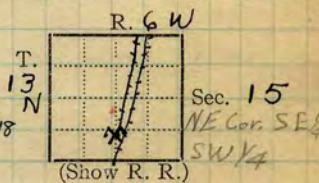
Town, Auburn.  
 Local Authority, Mine Notes (1504)

Surface alt., 632 ± Est. ft.  
 Depth to coal, 301 ft.  
 Alt. top coal, 331 ± ft.  
 Thickness: Av. 84 in.  
 Max. 132 in., Min. 54 in.

Level: Auth.,  
 Method,

R. R., C. & I. M. R. R.; C&A; 27.8.

Location: authority, Letter Sp. D. C. Mg Co. 3/11/18  
 (Mine notes)



Quest # 4 1905-31 Operator

Mine Name or No.

19 18 Springfield Dist. Coal Mg Co. No 54  
see map in files 23-31 (Black Diamond)

Successor to

Date

Succeeded by Peabody Coal Co. #54

Date 1615 M Council Bldg, Chicago.

Succeeded by

Date

PRODUCTION.

								U. S. No.
19								
1927								
1928								

Geol. Notes? Yes

Coop. No. 75

Coal secs? YES

Analyses No. #30

5115-6-7

GEN'L COAL REPT. 29

Examined by

Ref.

Coal bed name: Local #6

SHIPPING MINE

Survey No.

County Sangamon

Index No. 2515.42

✓ K.—ACTIVE SHIPPING OR LOCAL COAL MINE.

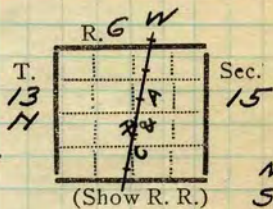
Town, *2 Mi. S. of Auburn.*  
 Local Authority, *Fred Burnett, Supt.*

Surface alt., *603* ft)  
 Depth to coal, *244* ft)  
 Alt. top coal, *359* ft)  
 Thickness: Av. *90* in.  
 Max. *132* in., Min. *54* in.

Cody Coop. 26

Level: Auth.,  
 Method,

R. R.,



Location: authority, *900'S of EW 1/4 Line.*  
*Mine Map.*

Operator

Mine Name or No.

*Springfield District Mining Co.*

19

*Black Diamond Mine #54*

Successor to

Date

Succeeded by

Date

Succeeded by

Date

*(Block Sample for Prof Layng  
 from 5600ft E & 1200 ft. N. of Shaft.)*

PRODUCTION.

								U. S. No.
19								

Geol. Notes?

Coop. No.

Coal secs? *2*

Analyses No.

Examined by *P. T. P.*

Ref.

Coal bed name: Local

Survey No.

County *Sangamon*

Index No. *2515.43*

K.—ACTIVE SHIPPING ~~OR LOCAL~~ COAL MINE.



Entrance *Shaft*Kind of tippel *Steel*Motive power for hoist *Steam*

Source if electrical

Kind of hoist (cage, skip, etc.) *Cage*Kind of haulage *Mule gather, Trolley motor haul*Mining equipment *Hand; Shot off solid*

Note any features of the equipment that are of special interest

## SURFACE DATA.

A. Topography,

B. Surficial materials, (1) Character,

(2) Thickness, (3) Effect on mining and shaft-sinking, of former drainage lines, underground water strata, etc.

C. Outcrops, (1) Character,

(2) Structure,

(3) Fossil horizons,

Collection No.,

(4) Evidences of subsidence,

} *Rock samples from dump.*

D. Note collection of mine maps, drill records and shaft logs.

See drill record sheet,

E. Notes on surrounding area,

Coal bed name: Local,

Collector, *P.T.P.*Mine, *Black Diamond No 54 Co. Sangamon*Survey No. Index No. *2515.43*

L.—SURFACE SHEET (Geol.)

Symbol	Description	Inches
(1 division = 3 in.)		
	Roof: Light gray clod under st.	$8 \frac{1}{8}$ "
	Coal with finely disseminated Sulphur, Calcite facings, some thin sh. partings, little charcoal. Mostly dull	33-0
	Sh ptg.	- 4
	Coal	3-4
	Sh	- 2
	Coal	15-0
	S lens, $36" \times 1\frac{1}{2}"$	- 4
	Coal	6-4
	Charcoal	- 2
	Coal	1-0
	Sh. ptg.	- 2
	Coal	5-0
	B.B. Sh, dark gray with $\frac{1}{4}$ to $\frac{1}{2}"$ S.	1-0
	Coal, mostly dull, few $\frac{1}{4}"$ bright bands, very little Sulphur, - Slightly harder than rest	26-0
	U.C. light gray, slightly gritty, stigmara fragments.	$92 \frac{3}{4}$
	Location: 2 <sup>nd</sup> H off 12 <sup>th</sup> W off Main North	Tape 7-7 (91")



Symbol	Description	Inches
(1 division = 3 in.)	Roof: Slate	5 $\frac{1}{8}$ "
	Coal, mostly dull, some charcoal bands	14-0
	Sulphur	-2
	Coal, as above	5-0
	Sh. ptg.	-1
	Coal	10-4
	Shale	-5
	Coal	8-4
	Shale	-6
	Coal, mostly dull, with some glance, S. & Calcite facings, & paper-thin sh. ptgs	23-0
	Sh. & Charcoal	-3
	Coal	-6
	Sulphur	-6
	Coal	4-2
	Sulphur	-2
	Coal, with S. facings, - coal dull, some $\frac{1}{4}$ " to 3" bright bands,	22-0
	Floor: U.C. med. gray, very sandy, tough.	91- $\frac{1}{8}$
	Location: 15 <sup>th</sup> Entry off 3 <sup>rd</sup> E, off Main N.	Tape 7'-6 $\frac{1}{2}$ " (90 $\frac{1}{2}$ " )

Collector, P.T.P.

Mine, Black Diamond #54 Co. Sangamon

Q.—COAL SECTION SHEET.

Coal: Survey No.

Index No. 2515.43

COAL MINING INVESTIGATIONS  
COOPERATIVE AGREEMENT

Mine Name or No., *Black Diamond or Bull 11*  
mile from *Auburn* SEE Mine sheet  
Operator, 1912 *Black Diamond Coal Co.*



Operator, 191

Entrance, *shaft* Elev., ft. { above,  
Depth to bottom coal, *308* ft. Alt.

SURFACE DATA.

A. Topography *Flat* See  
B. Surficial materials, (1) Character

(2) Thickness, *20'* (3) Effect on mining and shaft-sinking, of former drainage lines, underground water strata, etc.

*Yellow clay, very little sand in it. A few lenses of sand scattered thru.*

C. Outcrops, (1) Character, See  
(2) Structure, *Dip to east*, See  
(3) Fossil horizons, See  
Collection No.,  
(4) Evidences of subsidence, See  
D. Note collection of mine maps, drill records and shaft logs.

See drill record sheet.

E. Notes on surrounding area,

*Write for location.*

See

Coal bed name: Local, *6*

Survey *25?*  
State No. **2515**

Collector, *K. White*

Mine, *Black Diamond*

Co. *Smyth*

Co-op. No. *75*

L.—SURFACE SHEET (Geol.)

*County # 15*



Mr. W. L. Topf in a letter Sept 16, 1943

states that miners claim there was  
an oil seepage in the mine -



INDEX

Section

K<sub>5</sub>



Limestone  
Glod.

Coal hard bright brittle, slightly banded,  
streaked with sulphur.  
Top Coal 16"

Steel  
Band

Coal, duller, softer, with more  
mother coal.

Coal dull, very dirty thick layers  
of glance coal between dirt bands.

Coal banded mostly dull coal, blocky  
no impurities.

Same.  
Middle Bench 3'-8"  
Blue Band 0'-1"

Blue  
Band.

Bottom Coal dull, harder than  
top coal, rather clean, only  
bottom 6" has black jack partings

Cleat N 41° W  
" N 55° E

Room 2 off 5<sup>th</sup> South off North, East

Collector KDW

Coal 6

State No. 2815

Mine Black Diamond

Co. Sangamon

Co-op No. 75

X.—EXTRA SHEET No. 3

County #15



COAL MINING INVESTIGATION

COOPERATIVE AGREEMENT

Operator, *Black Diamond Co. Co.* Date, *7-16* 191 *2*  
 Mine, *Black Diamond* Located *1 1/2* miles\* from *Huburn*  
 Location in mine, *5th N. of S.E. (2nd face 2000' from shaft)*  
 Total (vertical) depth from surface at point of sampling, *310* ft.

In describing the beds and character of the members, note any member that is rejected by the miner. Note all clay and sulphur partings, whatever their thickness. Exclude from sample all clay and sulphur partings  $\frac{3}{8}$  inch thick or over (and even those of less thickness if they are rejected at mine or tippie).

SECTION OF BED AT POINT SAMPLED

No.	DESCRIPTION	FEET	INCHES
1	Top Coal (approx)	1	6
2	Top Coal not drawn		
3			
4	{Coal Bright (streaked)	<del>3</del>	<del>10</del>
5	{with Sulphur}	2	3
6	Mother Coal		1
7	Coal, Bright (streaked)	1	6
x 8	Blue Band		$\frac{3}{4}$
9	Coal, Dull		$\frac{5}{8}$
x 10	Sulphur Streak		$\frac{1}{4}$
11	Coal, Bright	1	11
12			
13			
14			
15	Output 2000 T <b>99</b>		
16	Roof - Slate under Limestone		
17	Floor - Fire Clay	6	3
	TOTAL,		

Is coal wet or dry? *Dry* ✓  
 Time exposed, \_\_\_\_\_ hours, *50* minutes.  
 Weight, *39* lbs gross, \_\_\_\_\_ net.  
 What are the impurities, and how do they occur? *Sulphur streaks*  
*Blue Bands*  
 What are shipped? *4-5-6-7-9-11*  
 What are excluded from the sample? *8-10* #6 ✓

\*Direction (N., NE., etc.). †Nearest railway station.

Town, *Huburn* Mine, *Black Diamond* Co. *Black Diamond Co.*  
 Sample No. *5115* Can No. *S.D. 4/4* No. *75* **2515**

I.—COAL SAMPLE SHEET. Sampler, *McFarland - Stafford*  
 #5115 County #15

COAL MINING INVESTIGATION

COOPERATIVE AGREEMENT

Operator, *Black Diamond Coal* Date, *7-16* 191 *2*  
 Mine, *Black Diamond* Located *1 1/2* miles\* *W* from † *Auburn*  
 Location in mine, *6<sup>th</sup> S. off S.H. 2 mi. from 2300 ft. shaft*  
 Total (vertical) depth from surface at point of sampling, *310 ft.*

In describing the beds and character of the members, note any member that is rejected by the miner. Note all clay and sulphur partings, whatever their thickness. Exclude from sample all clay and sulphur partings  $\frac{3}{8}$  inch thick or over (and even those of less thickness if they are rejected at mine or tipple).

SECTION OF BED AT POINT SAMPLED

No.	DESCRIPTION	FEET	INCHES
1	Top Coal (approx)	1	10
2	(Top coal not drawn)		
3			
4	Coal, Bright		7 1/2
X 5	Sulphur streak		1/2
6	Coal, Dull	2	6
X 7	Sulphur streak		1/2
8	Coal, Dull Bright		7
X 9	Blue Band		1 1/2
10	Coal Dull		1
X 11	Sulphur streak		1/2
12	Coal Bright	2	3
13		98	
14			
15	Output 20000		
16	Roof - Slate (Gimestone above)		
17	Floor - Fire Clay		
	TOTAL,	6	3

Is coal wet or dry? *Dry* ✓

Time exposed, \_\_\_\_\_ hours, *45* minutes.

Weight, *35* gross, \_\_\_\_\_ net.

What are the impurities, and how do they occur? *Sulphur streaks*

*Blue Bands - Mother coal*

What are shipped? *4-6-8-10-12*

What are excluded from the sample? *5-7-9-11* #6 ✓

Coal bed, \_\_\_\_\_

\*Direction (N., NE., etc.) †Nearest railway station.

Town, *Auburn* Mine, *Black Diamond* Co. *Wetmore Co. W. Va.*

Sample No. *75B* ✓ Can No. *26* ✓ No. *75* ✓

I.—COAL SAMPLE SHEET. Sampler, *Moore's* #515

#5116 county #15



COAL MINING INVESTIGATION

COOPERATIVE AGREEMENT

Operator, *Black Diamond Coal Co.* Date, *7-16* 191 *2*  
 Mine, *Black Diamond* Located *1 1/2* miles\* *5* from † *Auburn*  
 Location in mine, *7<sup>th</sup> N. of Main Mt. Entry (face) 2500' from*  
 Total (vertical) depth from surface at point of sampling, *310* ft *shaft*

In describing the beds and character of the members, note any member that is rejected by the miner. Note all clay and sulphur partings, whatever their thickness. Exclude from sample all clay and sulphur partings  $\frac{3}{8}$  inch thick or over (and even those of less thickness if they are rejected at mine or tippie).

SECTION OF BED AT POINT SAMPLED

No.	DESCRIPTION	FEET	INCHES
1	Top Coal (approx)	1	6
2	Top Coal Not drawn		
3			
4	Coal, Bright	1	10
X 5	Sulphur Streak		1/4
6	Coal, <del>Fr</del> Dull	2	4
X 7	Blue Band		1
8	Coal, Dull		4
X 9	Sulphur Streak		1/2
10	Coal, Dull	2	4
11			
12			
13			
14			
15	Output 2000 T		
16	Roof - slate (limestone above)		
17	Floor - Fire Clay		
	TOTAL,	6	11 3/4

Is coal wet or dry? *Dry* ✓  
 Time exposed, \_\_\_\_\_ hours, *50* minutes.  
 Weight, *38* gross, \_\_\_\_\_ net.

What are the impurities, and how do they occur? *Sulphur Streaks*  
*Blue Bands*

What are shipped? *4-6-8-10*

What are excluded from the sample? *5-7-9*

*#5117* Coal bed, *6* ✓  
 \*Direction (N., NE., etc.). †Nearest railway station.

Town, *Auburn* Mine, *Black Diamond* Co., *Black Diamond*

Sample No. *75A* ✓ Can No. *1568.21* ✓ No. *75* *515*

I.—COAL SAMPLE SHEET. Sampler, *Mason & Staff*

In the 3<sup>rd</sup> E off Main North at about the 14<sup>th</sup> or 15<sup>th</sup> entry is a sandstone cutout which cuts across irregularly, removing the cap, slate, and a part of the coal, leaving only  $2\frac{1}{2}$  ft. below. The ss. is of medium sand, not well cemented, brown iron stained, some cross bedding observed. The contact between ss, and ls, st. or coal is sharp, and shows slight subsequent movement by bending of the st. on the contact. Some of the rooms on either side of the entry were abandoned because of the cutout. The extent & trend of the cutout could not be learned.

Black Diamond  
#54.

Sangamon  
2515.43





## UNDERGROUND DATA (cont'd.)

- K. (5) Physical character of coal in benches,
- Relative hardness, *Bottom coal hardest, then top.*
  - Lustre, *Top coal, brightest, then bottom*
  - Fracture, *Slightly conchoidal to hackly.*
  - Texture, *solid to banded.* See
- (6) Impurities in coal, other than bedded,
- Kind, *Sulphur balls or masses.*
  - Position and persistence, *Irregular*
  - Rejected, *Yes.* Ease of separation, *By hand.* See
- L. Floor: (1) Material *Fire clay*
- Thickness *1" to 4' average 2 1/2'*
  - Variation *Constant.*
  - Note character, condition, tendency to heave, relation to undercutting, commercial value. *Heaves on contact with water. Glacks in air.*
- (5) Clay sample No. \_\_\_\_\_ Location, \_\_\_\_\_ See
- M. Stratigraphy
- Fossiliferous horizons underground,
- Collection No. \_\_\_\_\_ Location, \_\_\_\_\_
- N. Notes on effect of deep drilling in coal mine areas.

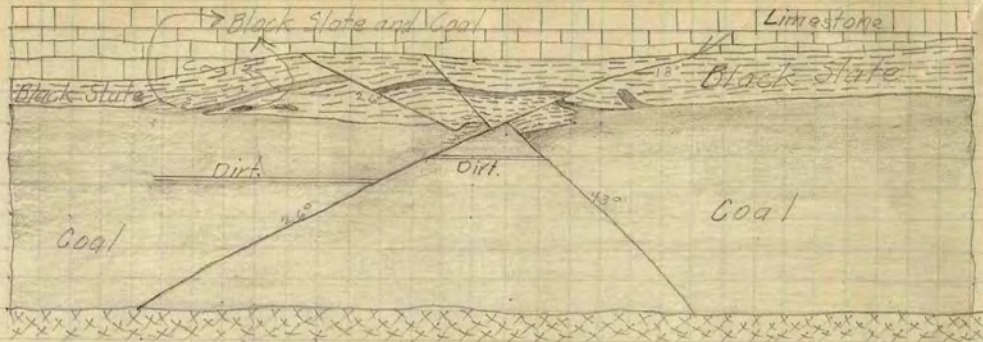
See

Collector, *KDW*Coal *6*State No. *2515*Mine, *Black Diamond*Co. *Sangamon*Co-op. No. *75*N.—UNDERGROUND SHEET (Geol.) *#15*

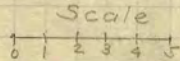


INDEX

K3



Junction of 3<sup>rd</sup> North and Main East, South.  
Sketch showing small Roll and Slips in Coal.



State No. 2515

Co-op No. 75

Coal 6

Co. Jangamoon

Collector K.P.W.

Mine Black Diamond

X.—EXTRA SHEET No. 1

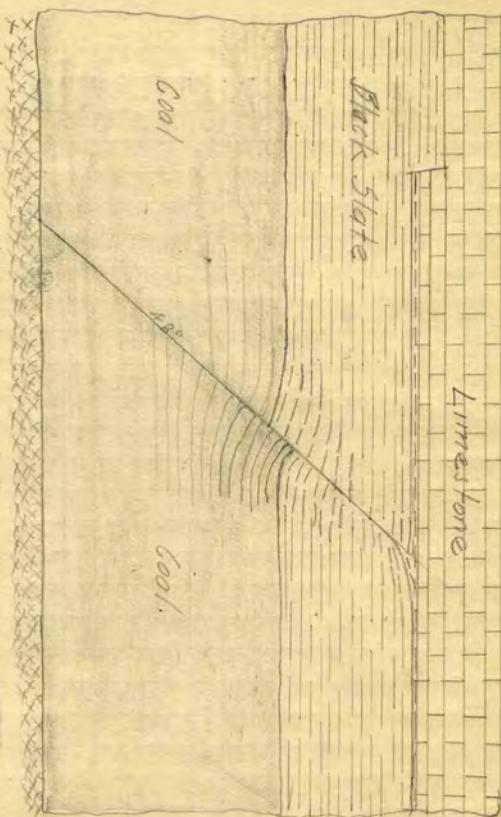
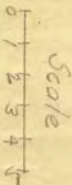
Co-op No. #15



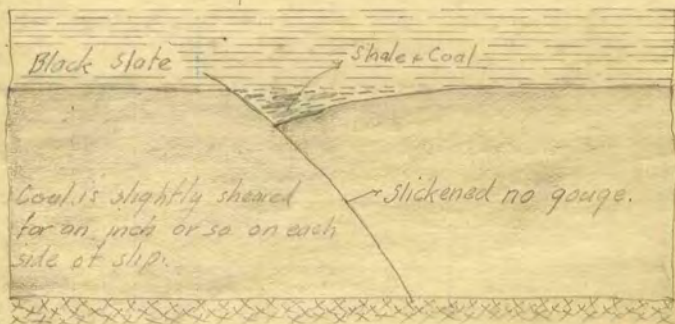
INDEX

K3

5<sup>th</sup> North. Main East South.  
Slip affects roof, has caved for 7'. Makes water  
effect on coal is very small.  
Bearing N55° E.



K3



6<sup>th</sup> North. Main East, South

Collector KDW

Mine Black Diamond

X.—EXTRA SHEET No. 2

Coal 6

Co. Tangamon

County #15

State No. 2515

Co-op No. 75



**INDEX**

## Section, with Black Slate Roof.

 Room 4 on 6<sup>th</sup> South, North East.

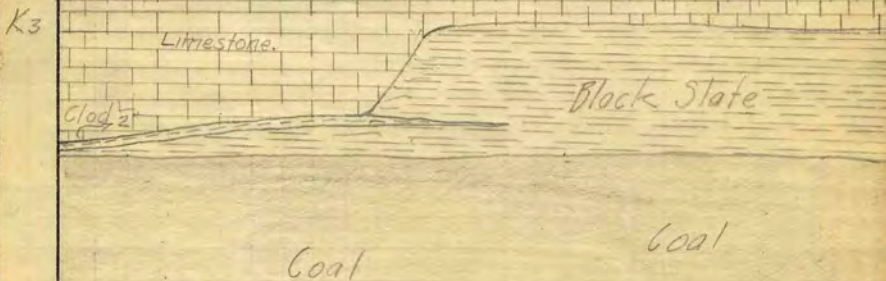
1. Top coal up (reported) 18"
2. Middle bed, with, mother coal, sulphur streaks and bands, rather dirty and dull 4'-5"
3. Blue Band 8'-1/2"
4. Bottom coal, hard, brighter than middle bed, jack partings and bands 2'-5"

Cleat is well developed.

N 62° E

N 50° W

J Clod; a limey tabular clay, very carbonaceous towards bottom, thickness 1" up. General thickness where Limestone forms roof 1" to 8".



Sketch showing unconformable contact of Approx. scale. Black Slate and Limestone.

0 1 2 3 4

G Black Slate, sheety 0' to 4' thick average 2 1/2'.  
 Cleavage N 45° E parallel to cleat of coal.  
 The slate cuts along these cleavage planes in elongated lenses to the cap rock.

Collector KDW

Coal 6

State No. 2515

Mine Black Diamond

Co. Sangamon

Co-op No. 15

X.—EXTRA SHEET No. 4 County #15



INDEX

H

Where limestone has a clean parting and is solid it makes an excellent roof. In other parts of the mine, it is irregular in bedding falls in large irregular mass, and continues to come down until it arches itself.

Modular projections (Tits) occur, though not in a large number.

The Limestone has concretions thru it. The concretions are a very dark gray fine grained siliceous Limestone.

Where the roof is poor the limestone is of a light gray color, sandy, argilloceous, weathers rapidly, and is very different in character from the solid limestone top.

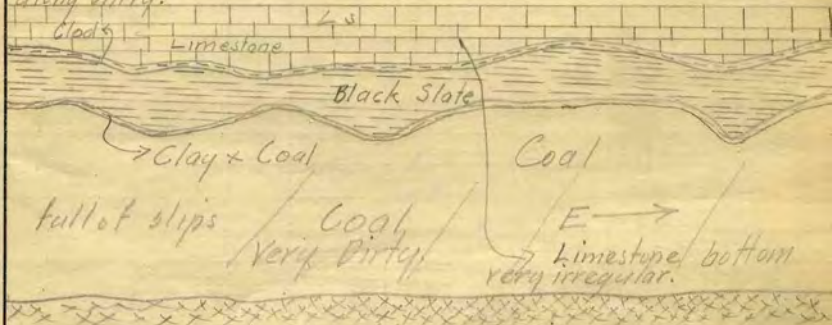
The normal roof is that typical of the district, it is a dark gray non-crystalline stone with white specks scattered thru it. This stone has cleavage planes very well developed and at times falls in perfect rectangular blocks.

Section of Cap Rock

Limestone	5'
Shale	4'
Cap Rock	12"
Coal	

K3

Sketch showing irregularity in deposition, extending 150 ft along entry.



Face Main South, East Side

Collector KDW

Coal 6

State No. 2515

Mine Black Diamond

Co. Sangamon

Co-op No. 75

X.—EXTRA SHEET No. 5

County #15