

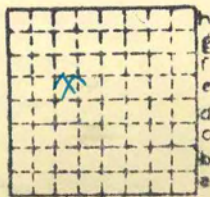


Form 180

MF 3340

Peabody

55



Sec.	9	
T.	15	N.
R.	5	W.
Index No.		



Mine originally operated by: (1)

Date

Original name or number:
Springfield Illinois Coal Report 1954 p. 88

LATER OPERATORS

Date	Operator	Name or No.
1885 ¹⁹⁰³	Springfield Coal Mining Co.	No. 5
1919	Springfield District Coal Co.	No. 55
1925	Peabody Coal Co.	No. 55

7/16/93 These dates are moved up. Need to research

Springfield coal & Mwingee #5 newsmen in 1903. Bought up property of Junction mine. See Coal Rept. Fifth District 1903. mB.

Dept m+m - date of last record - 1931 Min Map file # 29

*Also owners

#See ownership sheet

SHAFT Railroad, Wagon, Strip, Idle, Abandoned

250'

IDENTIFICATION

519"

County No. _____

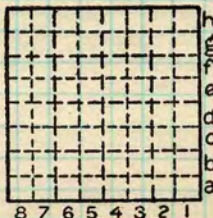
Coal No. _____

Coal Report No. _____

□ 5

Quad.

County SANGAMON



Sec.

T.	N.
R.	S.
E.	W.

Index. No.

COAL MINE OPERATOR



Town, **Springfield**

Local Authority,

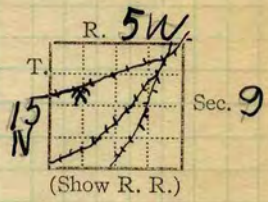
Level: Auth., **Bull 20**

Method,

R. R., **C + A. & W.**

Location: authority, **Letter Sp. Dist. Coal Co. 9/11/18**
(Mine notes)

Surface alt., **607** ft.
Depth to coal, **250** ft.
Alt. top coal, ft.
Thickness: Av. **71** in.
Max. **75** in., Min. **69** in.



Aux #9
1835-1930

Operator

Mine Name or No.

19 18

District Coal Mining Co. No. 55?

See map in files 23-31

Successor to
Date

Also known as Klondike mine

Succeeded by
Date

Peabody Coal Co #55

Succeeded by
Date

1615 Mc Cormick Bldg. Chicago

PRODUCTION.

Illinois

U. S. No.

1917

320 295

1926

Coal Age (10-7-26) Klondike mine has resumed operations

1927

300 350

1928

1930 #5

Geol. Notes? *Yes*

Coop. No.

Coal secs.? *1*

Analyses No.

1772

Examined by

abs

Ref.

Coal bed name: Local **SHIPPING MINE**

Survey No.

County **Sangamon**

Index No.

1509.26

K.—ACTIVE SHIPPING OR LOCAL COAL MINE.



Mine originally operated by: (1)
 Date 1917 (1900 Quad)

Springfield Dist CMC #3
 Springfield

Original name or number:
 Illinois Coal Report

KLONDYKE? Junction
 Sangamon

LATER OPERATORS

Date	Operator	Name or No.
2	1924 Peabody	55
3		
4		
5		
6		
7		
8		
9		
10		
11		
12		
13		
14		

Plat sheet #3.

* Also owners

See ownership sheet

Railroad, Wagon, Idle, Abandoned
SHIPPING MINE
 IDENTIFICATION

County No.

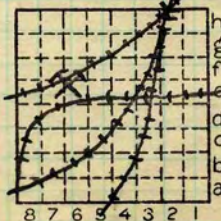
Coal No.

Quad. 158

Part 8

County

Sangamon.



Sec. 9
 T. 15 N.
 R. 5 W.
 Index No.

1509

COAL MINE OPERATOR



Location and Elevation Data

Location: Exact ~~Approximate~~

(Approximate only if no trace or record of original exists)

Location by W. B. Roe

Date 4-22-31 Notebook No. 602 Page 3-5

Looseleaf ref. _____

Map files No. 12-83-13d

Description of location

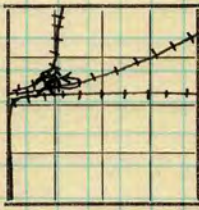
Position in sec., 1/4 sec., 40 acres

_____ feet from North line

_____ feet from East line

750 feet from South line

1200 feet from West line



Sec. 9
T. 15 N.
R. 5 W.

Farm _____

No. _____

Company Peabody Coal Co.
Kloudike Mine

No. 55

County No. 45

Other description: _____

Idle
MN 1912

Elevation 613.5 ft.

By W. B. Roe

Method: Level, transit, alidade, hand level

Alidade
Shaft casing

Elevation of _____

Height of point above ground _____

Date 4-22-31 Notebook 602 P. 3-5

Looseleaf ref. _____

Map files No. 12-83-13d

Description of item: (drill hole, mine, etc.) Mine shaft

256' to bottom Coal 5' 11" **ABANDONED SHIPPING MINE**

County Saugamou Quadrangle Springfield Index No. 1509

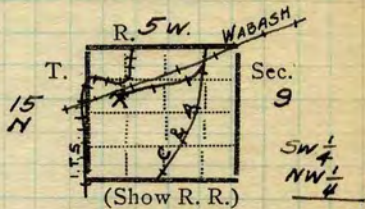
Town, *Springfield*
Local Authority, *Harry Preble, Supt*

Surface alt., *607* ft.
Depth to coal, *250* ft.
Alt. top coal, *357* ft.
Thickness: Av. *71* in.
Max. *75* in., Min. *59* in.

Level: Auth., *(Preble reports 234' to top of coal, 240' to bottom. Elev. of Curb not known)*
Method,

R. R., *Chicago & Alton. Wabash.*

Location: authority, *Mine Map.*



Operator

Mine Name or No.

19 *Springfield District Coal Mining Co.*
Mine No. 55

Successor to

Date

Succeeded by

Date

Succeeded by

Date

(Block sample for Prof. Layng. from 4600 f.s., & 60 ft W. of shaft.)

PRODUCTION.

							U. S. No.
19							

Geol. Notes? *Yes*

Coop. No.

Coal secs? *2*

Analyses No.

Examined by *P.T.P.*

Ref.

Coal bed name: *Local - 5*

Survey No.

County *Sangamon*

Index No. *1509.26*

K.-ACTIVE SHIPPING ~~BEFORE~~ COAL MINE.

Entrance *Shaft*Kind of tippel *Steel*Motive power for hoist *Steam*

Source if electrical

Kind of hoist (cage, skip, etc.) *Cage*Kind of haulage *Mule gathering, Trolley motor haul.*Mining equipment *Shoot off Solid.*

Note any features of the equipment that are of special interest

SURFACE DATA.

A. Topography, *Flat*

B. Surficial materials, (1) Character,

No data.

(2) Thickness,

(3) Effect on mining and shaft-sinking, of

former drainage lines, underground water strata, etc.

C. Outcrops, *N.D.* (1) Character,

(2) Structure,

(3) Fossil horizons,

Collection No.,

(4) Evidences of subsidence,

D. Note collection of mine maps, drill records and shaft logs.

See drill record sheet,

E. Notes on surrounding area,

Coal bed name: Local, *5*Survey No. Collector, *P.T.P.*Mine, *No. 55*Co. *Sangamon*Index No. *1509.26*

L.—SURFACE SHEET (Geol.)

F. Thickness of rock above bed worked, *More than 60' seen.*

- (1) Important variations, See X 1.

G. Note presence of strata having important effect on mining, See

- (1) Position,
- (2) Character,
- (3) Persistence,
- (4) Other workable coal beds

See

H. Cap rock, *Lis, med. gray, banded.*

- (1) Thickness, *feather edge to 10"*
 - (2) Height above coal, *2' to 4'*
- See X 1.

I. Immediate roof, *Black St. with 1/2" 5" band*

- (1) Thickness, *2'-4'* (2) Contact with coal, *Sharp, Coal sticks to roof.*
 - (3) Horizontal variation, *Slate very uniform*
- See X 1

J. Draw slate, (1) Thickness, (2) Contacts *None*

- (3) Persistence,

K. Coal bed: Max. *75* Min. *59* Av. *71* inches

- (1) Benches, *None,*
 - (a) Position,
 - (b) Persistence,

See X 1

- (2) Bedded impurities, kind, position in benches, persistence, ease of separation, *Sh. & Sh. & S. partings observed in a few places, not over 1/4" thick, and not persistent over mine.*

See

- (3) Irregularities in bed (due to deposition, erosion, or movement), *Reported very uniform over entire mine, horsebacks numerous.*

- (a) Effect on mining, See X 2

SECTION		
Name	Ft.	In. Sym.

Collector, *P. T. P.*

Coal: Survey No.

Mine, *No. 55* Co. *Sangamon*

Index No. *1509.26*

K. (5) Physical character of coal in benches,

(a) Relative hardness, *Very Uniform.*(b) Lustre, *Dull in most,*(c) Fracture, *Irreg.*

(d) Texture,

See

(6) Impurities in coal, other than bedded,

(a) Kind, *Sulphur lenses & masses.*(b) Position and persistence, *Not persistent.*

(c) Rejected,

Ease of separation,

See

L. Floor: (1) Material, *Med. gray clay, gritless, very tough.*

(2) Thickness,

(3) Variation,

(4) Note character, condition, tendency to heave, relation to undercutting commercial value.

*Very tough, no. grit, no heaving.**Coal Not undercut.*

See

(5) Clay sample No.

Location,

M. Stratigraphy,

(1) Fossiliferous horizons underground,

Collection No.

Location,

N. Notes on effect of deep drilling in coal mine areas.

See

Collector, *P.T.P.*Coal: Survey No. Mine, *No. 55*Co. *Sangamon*Index No. *1509.26*

Symbol	Description	Inches
(1 division = 3 in.)	Roof: 2" "S" band under black slate.	$8\frac{1}{8}"$
	Coal, clean, bright, some calcite facings.	27-0
	S lens Sulphur lens, $1\frac{1}{2}" \times 8"$	1-0
	Coal as above, more dull bands toward base	42-0
		<hr/> 70"
	Floor: Clay, med. gray, non gritty, very tough.	
	Tape $5' 9\frac{1}{2}"$ $= 69\frac{1}{2}"$	
	Location of Sec: 6 th S off 12 th E off M. S.	

Collector, P.T.P.
Mine. No. 55

Co. Sangamon

Coal: Survey No.
Index No. 1509.26

Symbol	Description	Inches
1 division = 3 in.)	Roof: Blk. st. Top 3" coal sticks to roof.	$8 \frac{1}{8}$ "
	Coal, fairly hard, bright, irreg. fract. Clean.	33-2
	Sh ptg.	0-2
	Coal, as above	39-0
	Sh. & S. ptg. Coal	0-2 2-2
	Floor: Clay, med. gray, no grit, very tough.	75-0
	Tape 6'-3"	
	Loc. of Section: Rm 2 S, off 16 th W off N. S.	

Collector, P. T. P.

Mine, No. 55

Q.—COAL SECTION SHEET.

Coal: Survey No.

Co. Sangamon

Index No. 1509.26

INDEX

F.

On S. side of Shaft the roof had caved, due to a fire many years ago. The rock was exposed for ca. 60' above the coal, all a lt. gray "soapstone" above the cap lis. The lower part was being walled with concrete, and the upper part held up by timbering set on steel I beams in the concrete.

H

Cap rock where broken by horsepacks especially at the intersection of 2, often comes down. It is rather persistent and thins out in only a few places.

I.

Slate is black, with dolomite lenses ca. $\frac{1}{4}$ " x 2", concretions, especially in lower part, and a few pyritized shells. The "5" band is a calcareous-pyritiferous zone $\frac{1}{8}$ " to 2" in thickness carrying shell fragments. Some concretions are in it. The band suggests the "band rock" of the Macon mine at Decatur.

Above the slate and below the cap lis. is a layer of clod, $\frac{1}{2}$ to 3" thick; very persistent over the mine.

The "5" band slacks on exposure in old rooms & haulage ways, and crinkles up, giving a shelly roof.

"5" band ~~slate~~

K.

Lower 1ft \pm sticks to floor, and shots are placed low in coal to break it loose.

Collector P.T.P.

Coal

State No.

Mine No. 55

Co. Sangamon

Co-op No. 1509.26

K3

Horsebacks are very common thruout the mine. The filling is very tough. Movement of gouge apparently downward, with slate fragments below st. level, & coal below in gouge. Where horsebacks are large, & where two cross often weakens the roof that it must be timbered. Maximum slip at horseback observed: 18'

Collector *F. T. P.*Coal *5* State No.Mine *No. 55*Co. *Sangamon*

Co-op No.

X.—EXTRA SHEET No. *2**1509.26*