

FIELD NOTES

Illinois State Geological Survey

See maps nos. 4107 c3.5-5, d5.1-185, d5.1-186, d5.1-187
c3.5-6

(0123.23h)

September 14, 1927

Gus Lakamp's mine.

Mine shaft 200' W. of house. Angle of elevation
10°45'. Dump 40' x 40' x 2'. Concretions
(pyrite), grey and black shale. Elevation 540' (?)
Depth of shaft said to be 80'*. Coal taken out as
far W. as road. 38" coal; black slate roof.
Fossils in dump. Orthoceras in a pyrite concretion.
Productus - loose.

Gauged tanks on Mahon farm:

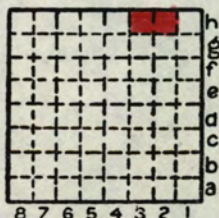
100 bbl. steel tank	8' 1 3/4"
After water drawn	7' 11 1/2"
Wooden tank	3' 8"

* Found out later this shaft is 30' instead of
80' deep.

By A.H. Bell Date 1927

Quadrangle Winchester

County Scott Sec. 23 T 15N R 12W



FIELD NOTES

Illinois State Geological Survey

See map no. 4107 c3.5-5

(0123.3h)

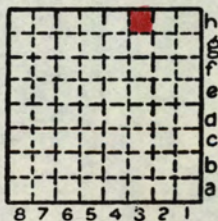
September 14, 1927

NE. of Merritt.

Top of coal shaft (abandoned) 540'.

Probably No. 2 with black slate above the coal.

Top of coal about 460'. 36"-38" thick.



By K.W.Stott Date 1927

Quadrangle Winchester

County Scott Sec. 23 T 15N R 12W

FIELD NOTES

Illinois State Geological Survey

See maps nos. 4107 c3.5-5, d5.1-185, d5.1-186, d5.1-187
c3.5-6

(0122.1e)

October 24, 1927

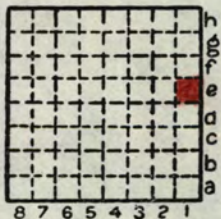
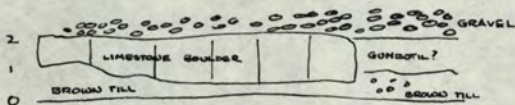
Information from farmer plowing at 0122.1e. Gus Lakamp shaft was only 30' deep instead of 80' as reported by water well digger.

Water well diggers nearby: Charlie Scott, Chapin and Emerson Haynes, Merritt.

Same farmer mentions a vein of soft coal 2' thick which he strip-mined along creek at about 0115.23c (or 0115.23d). Went back over this but could find no trace of diggings nor outcrop coal. Coal was said to have no roof (i.e. a soft roof). Probably it is below lower most outcrop of Vergennes which is about 538' (estimated elevation). If this coal is the same as the Neelyville block coal and the interval between it and No. 2 is the same as at Neelyville, namely 25', then No. 2's elevation here is $538' - (25' + x) = 513' - x$.

Talked with farmer in house at 0115.4c. Above is wrong. The coal was mined close to the N. line near fork - estimated elevation 550'. $550' - 25' = 525'$.

Large brown limestone boulders in till 10' x 1½' x (5'+?) in layer of black gumbotil overlying till and underlying stream gravel.



By A.H. Bell Date 1927

Quadrangle Winchester

County Scott Sec. 22 T 15N R 12W