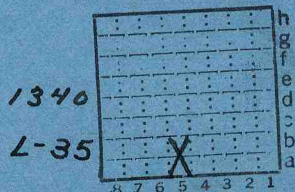


See also
 section 13 01. - also 13 H
 2 locations for
 this mine.
 This loc. is most
 questionable.



ISGS Mine Index # 3332

Eagle Creek C.C.



Sec. 13
 T. 10 S.
 R. 7 E.
 Index No.





Mine originally operated by: (1)

J. F. Raulston Eagle Creek Coal Co.
P.O. Box 512 Eldorado, Ill.

Date

1898

Original name or number:

Illinois Coal Report

p. operator's report 1948

LATER OPERATORS

Date

Operator

Name or No.

2 1949 John Raulston Coal Co.

3 1950 Eagle Creek Coal Co.
Eldorado, Ill.

4 1950 HOWARD MILLS PAUGH
5 Eldorado, Ill.

1948 - 1,000 tons
1949 1,200 "

8 1951 EAGLE CREEK COAL Co.

Mine map location E 1/2, SE, SW Sec 13

See Budement Geol Quad map
Nelson & Sumner 1986 for crossline of 5
in this area.

3332

14 (1948)

*Also owners

#See ownership sheet

Railroad, Wagon, Strip, Idle, Abandoned

Drift

70' (1948)
4'6"

1956

IDENTIFICATION

County No. 1340

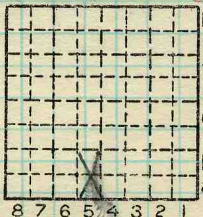
Coal No. 5

Coal Report No. L-35

Quad.

(1948) 4'6"

County Saline



Sec. 13

T. 10 N. S.

R. 7 E. W.

Index No.

COAL MINE OPERATOR

(SE, SE?)



(Sheets) COAL PRODUCTION (Sheet)

Period			Tons		
Mo.	Day	Year	Mo.	Day	Year
		1948			1 000
		49			1 200
		Eagle Creek C.C. 50			380
		H. Millsbaugh 50			148 } 528
		EAGLE CREEK C.C. 51			550
		'52			400
		1953			500 } 419 } 234
		idle after Nov. 1954			
		do prod. 1955			idle
		1956			ab'd

SUMMARIES

No.	to	No.

Railroad, Wagon, Strip, Idle, Abandoned

Drift

1956

IDENTIFICATION

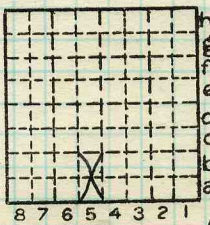
County No. 1340

Coal No. 5

Coal Report No. ~~135~~
L-35

Quad.

County Saline



Sec. 13

T. 10 N.
S.

R. 7 E.
W.

Index No.

COAL MINE—PRODUCTION

(SE, SE, ?)

ILLINOIS GEOLOGICAL SURVEY, URBANA



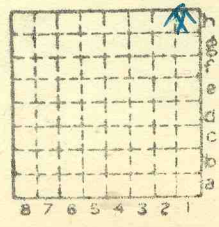
See also 13 JB (E. 1/2).
 2 locations for this mine.
 to mined out area according
 map, this is correct.
 mine map places this in
 the E. 1/4 SW 1/4

3332

Eagle pk. cc.

L 35

1191



Sec. 13
 T. 10 N. S.
 R. 7 E. W.
 Index No.





Mine originally operated by: (1) Clifford Partain

Date

1898

Original name or number:

Illinois Coal Report

p.

LATER OPERATORS

Date

Operator

Name or No.

1939

Partain & McGowan

1939

Eagle Creek Coal Co.

#1

Crop 4'8" of #5 coal

*Also owners

#See ownership sheet

Railroad, Wagon, Strip, Idle, Abandoned

Drift

IDENTIFICATION

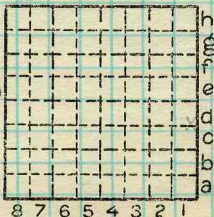
County No. _____

Coal No. 5

Coal Report No. L-35

Quad. Equality (274)

County Saline



Sec. 13

T. 10 S.

R. 7 E.

Index No. 1213

COAL MINE OPERATOR