



See CC Oakwood #2

Illinois + W. Va CC

Illinois Mine

MI 1006

Sec 19

19 N

12 W

VERMILION Co.

Mine originally operated by: (1)

Date

Original name or number:

Illinois Coal Report _____ p. _____

LATER OPERATORS

Date Operator Name or No.

2	Lee CC Illinois W.Va	Oakwood #2 1982 ↓ 1983 - July 1984 Illinois Mine	
---	-------------------------	--	--

Prod.

5	Lee CC	1982	300
6	Ill W.Va	1983	63 582
6	Ill W.Va	1984	156 779

f

~~h~~

*Also owners

#See ownership sheet

Railroad, Wagon, Strip, Idle, Abandoned

IDENTIFICATION

County No. _____

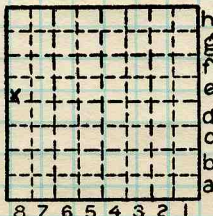
Coal No. _____

Coal Report No. _____

7

Quad.

County



Sec. 19

T. 19 N.

R. 12 W.

Index. No.

COAL MINE OPERATOR

Mine originally operated by: (1)

Date

Original name or number:

Illinois Coal Report

p.

LATER OPERATORS

Coal firm pulling out of mine, state says

DANVILLE

10/11/84

By Kevin Cullen

C-N Staff Writer

The operators of Vermillion County's only coal mine are pulling their equipment out this week and heading back to West Virginia, state mining officials say.

Federal officials closed the mine in July for safety violations and the underground pit hasn't dug any coal since.

The mine, formerly run by the Lee Coal Co., is south of Oakwood, south of Route 10 and north of the Salt Fork River. Earlier this year, it employed about 40 miners, many of them from out of state.

Al Robinson and Jim Ryan, partners in the Illinois and West Virginia Coal Co., were buying the mine from Floyd Lee, an Oakwood businessman.

Ryan and Robinson run seven mines in West Virginia. The Oakwood pit, which they took over in December 1983, was their first Illinois venture. Neither partner could be reached today at their office in Danville, W.Va. No one answered calls at the mine, either.

Brad Evilsizer, director of the Illinois Department of Mines and Minerals, said today that the firm has not yet filed a closure document, but the mine's status is "inoperative and temporarily closed."

Apparently, no new buyer has been found. No application has been filed with the state to change the operator's name on the mine permit.

If the mine is abandoned, a survey map must be filed with the

state within 90 days of closure. Ryan and Robinson would either restore the land or face bond forfeiture.

Closure involves sealing all shafts or filling shafts with dirt.

Evilsizer said the mine has been cited repeatedly for violating reclamation regulations on drainage and refuse containment. Neighbors complained the mine was polluting the air and blackening water in nearby Pollywogs lakes.

However, state officials said in August that the operators had taken steps needed to comply with regulations.

Federal authorities closed the mine in July because it lacked adequate escape shafts and emergency equipment.

Thomas Pinnell, state mine safety inspector, said he toured the site Tuesday and found workers "pulling all the machinery out of the mine. They're folding up. I think the mine is done."

Only three pieces of underground equipment remained Tuesday.

Lee operated the mine with a few men and short shifts.

The new operators, however, added miners, ran two 10-hour shifts daily, and production surged. In June 1983, for instance, the mine produced 8,200 tons. In June 1984, production was up to 28,061 tons.

The mine has long been plagued with roof problems. "It wasn't meant to be run two shifts," Pinnell said. When Lee ran it, he said, coal was mined one shift while the

roofs were braced and timbered the next shift.

Water sometimes poured into the pit and flooded operations.

"It's not the mine's fault," he said.

Pinnell said that Charlie Daniels, mine superintendent, told him Tuesday that all the underground machinery would be pulled out.

The mine has three vertical shafts about 110 feet deep and a sloping shaft. Before the mine can be closed, the shafts must be sealed with dirt or steel-reinforced concrete caps.

"They say they will do the right thing," Pinnell said.

If the mine is abandoned, the property must be restored to timberland or grazing land, he said.

The new operators spent an estimated \$3 million to \$4 million on mine improvements, Pinnell said, including heavy equipment, new air shafts and escape hatches.

Most of the above-ground equipment belongs to Lee and will stay on the site, Pinnell said.

Charles Sills, who lives near the mine, said he had heard the mine was for sale, but didn't know the West Virginia firm was pulling out.

"All I really know is that they haven't operated for more than two months," he said.

He and his family earlier had complained of dust problems springing from the around-the-clock operations.

"At least the dust problem is gone now," he said.

IDENTIFICATION

County No. _____

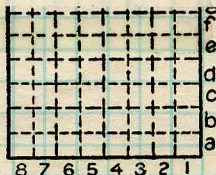
Coal No. _____

Coal Report No. _____

□ 7

Quad. _____

County _____



T. 19 N. S.

R. 12 W. E.

Index No.

COAL MINE OPERATOR



Sec 19